

# Kodak

## Flexcel NX Wide System



### Brand new imager

In keeping with Kodak's commitment to ongoing product development, the **Kodak Flexcel NX Wide System** is now offered with a brand new imaging device. The **Kodak Flexcel NX Wide-C Imager** utilizes the same award-winning imaging technology common to all **Kodak Flexcel NX Imagers**, and offers a compact footprint, enhanced edge detection features for media handling and a streamlined installation process.

With a maximum plate size of 42 x 60 inches (1067 x 1524 mm) the **Flexcel NX Wide System** accommodates large layouts and facilitates efficient job planning, while producing **Kodak Flexcel NX Plates** that enable print production efficiencies and outstanding print quality. In addition to the **Flexcel NX Thermal Imaging Layer**, the device offers full compatibility for **Kodak DITR Film** imaging and an opportunity to add a Hybrid Option for digital offset plate imaging. The original **Flexcel NX Wide Imager** remains an important part of the product portfolio, and is available for those customers that need even larger digital offset plate imaging capabilities.

### Shelf impact and production efficiency

The fine image reproduction, print contrast and high densities delivered by the **Flexcel NX Wide System** allow prepress service providers and converters to compete for business traditionally beyond the capabilities of flexo, enabling print buyers to take advantage of both the flexibility and cost-effectiveness of flexo and the quality they would normally expect from offset, gravure or digital printing.

In addition, **Flexcel NX Plates**—with enhanced ink transfer capabilities and high-resolution, flat-top dot structure—enable print efficiencies that include faster start up times, reduced waste and longer plate life. Plate surface texturization enabled by **Kodak DigiCap NX Screening** means that customers can

expect higher densities, a wider color gamut and improvements in combination plate utilization, opening up the opportunity to reduce the number of plates required per job.

### High-quality CTP output for digital flexo plate making

Building on our success and expertise in thermal CTP technology, **Kodak Flexcel NX Imagers** utilize **Kodak SQUAREspot Imaging Technology** to deliver exceptional quality, productivity and consistency. The imager creates a mask for plate making—imaging the **Kodak Flexcel NX Thermal Imaging Layer** at an impressive speed—and features user-friendly semi-automatic loading and unloading.

Prior to traditional UV exposure and processing, the imaging layer is laminated to a **Flexcel NX Plate**, a key process that eliminates the presence of oxygen and ensures the creation of full-amplitude flat top dots that are a faithful 1:1 reproduction of the original digital file.

### A complete solution

Kodak combines expertise in digital imaging technology and materials science to bring you more than individual components; we deliver a full solution for digital flexo that includes software, imager, plate making processes and plate materials. All components of the **Flexcel NX Wide System** are optimized to work efficiently together, bringing you best-in-class capabilities for high-definition flexo printing.

In addition, when bundled with **Kodak Prinergy Powerpack Workflow**, Kodak's color proofing systems, and **Kodak Service and Support**, the **Flexcel NX Wide System** is part of a complete **Kodak Solution** that delivers high quality and consistency to packaging prepress service providers and printers.

# Completely integrated turnkey solution



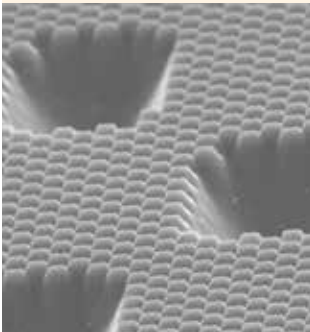
## Kodak Flexcel NX Wide-C Imager

The NEW! **Flexcel NX Wide-C Imager** enables plate making up to 42" x 60," with a compact device footprint. Like all other imagers in the family, the **Flexcel NX Wide-C Imager** utilizes the proven **Kodak SQUAREspot** Imaging Technology to deliver exceptional image quality.



## Kodak Flexcel NX Wide Laminator

The **Flexcel NX Wide Laminator** is used to laminate the Thermal Imaging Layer to the **Flexcel NX Plate** prior to exposure and processing. While quick and simple, the lamination stage is critical because it removes all oxygen between the mask and the plate, allowing the creation of full-amplitude flat top dots.

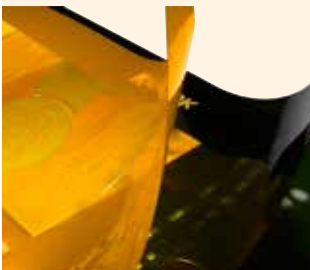


## Kodak TIFF Front End Software

Powerful **Kodak TIFF Front End Software** drives the **Flexcel NX Imager** and allows operators to preview and inspect files for accuracy before imaging, and optimize media usage by arranging multiple separations on a single plate. The result is outstanding device control and job management, fast processing speeds and simplicity of operation.

## Kodak DigiCap NX Screening

Award-winning **Kodak DigiCap NX Screening** is implemented in the **Kodak TIFF Front End**. It utilizes the high-resolution capabilities of the **Flexcel NX System** to create a micro-texturization pattern on the surface of all plate elements, significantly boosting ink transfer efficiency.



## Kodak Flexcel NX Thermal Imaging Layer

The unique formulation of the **Flexcel NX Thermal Imaging Layer** allows high resolution and fast imaging, and intimate optical contact with the plate during UV exposure.

## Kodak Flexcel NX Plates

**Flexcel NX Plates** are reliable, high-quality flexographic plates designed to print on a wide variety of substrates. They offer superior ink transfer, smooth solids, uniform laydown, robust on-press performance and excellent ozone resistance.

### Accessories:



#### Densitometer

The **X-Rite 361T UV densitometer**, supplied as a standard accessory with every **Flexcel NX Wide System**, is a valuable tool for imaging set-up, troubleshooting and quality control.



#### Media Rack

A convenient mobile media rack, designed to be placed adjacent to the **Flexcel NX Wide Imager**, ensures that sheets of Thermal Imaging Layer are close at hand when required for loading.



#### Rolling Plate Cart

A tilting rolling cart facilitates the safe transportation of wide format plates between lamination, exposure and processing stations.



## Kodak Flexcel NX Wide Imager

A **Flexcel NX Wide System** that includes the original **Flexcel NX Imager** (an alternative to the **Flexcel NX Wide-C Imager**) can be an excellent choice for customers that require very large format digital offset plates.

# Kodak Flexcel NX Wide System specifications

	Kodak Flexcel NX Wide-C Imager	Kodak Flexcel NX Wide Imager
<b>Physical characteristics</b>		
Imager dimensions (H x W x D)	47.2 x 100 x 71.3 in (120 x 254 x 181 cm) Loading table height: 33 in (83 cm)	47 x 127 x 92 in (120 x 323 x 234 cm) Loading table height: 33 in (83 cm)
Debris removal cabinet (UDRC)	34 x 22 x 22 in (86 x 56 x 56 cm)	
External vacuum pump (H x W x D)	N/A	20 x 26 x 57 in (51 x 67 x 144 cm) Required for imaging of offset plates only
Weight	2,314 lb (1,050 kg)	3,870 lb (1,760 kg)
<b>Workflow specifications</b>		
Workflow connectivity	<b>Kodak TIFF Front End Software</b> Optional: <b>Kodak Prinergy Powerpack Workflow</b>	
<b>Specifications for imaging Kodak Flexcel NX Thermal Imaging Layer (TIL) (used to make Kodak Flexcel NX Plates)</b>		
Throughput (includes loading and unloading)	With <b>DigiCap NX Screening</b> applied: Imaging rate: 11.8 m <sup>2</sup> /hr 6.1 wide TIL per hour 10.3 mid TIL per hour 12.8 narrow TIL per hour  Without <b>DigiCap NX Screening</b> applied: Imaging rate: 9.1 m <sup>2</sup> /hr 4.8 wide TIL per hour 8.3 mid TIL per hour 10.4 narrow TIL per hour	With <b>DigiCap NX Screening</b> applied: Imaging rate: 13.4 m <sup>2</sup> /hr 6.8 wide TIL per hour 8.6 mid TIL per hour 10.8 narrow TIL per hour  Without <b>DigiCap NX Screening</b> applied: Imaging rate: 7.3 m <sup>2</sup> /hr 3.8 wide TIL per hour 4.9 mid TIL per hour 6.3 narrow TIL per hour
Media sizes	25.2 x 33 in (640 x 838 mm), to make 24 x 30 in (610 x 762 mm) plate 33 x 43.2 in (838 x 1,097 mm), to make 31.5 x 42 in (800 x 1,067 mm) plate 43.2 x 61.2 in (1,097 x 1,554 mm), to make 42 x 60 in (1,067 x 1,524 mm) plate	
Resolution	2400 dpi	
Repeatability	16 microns between 2 consecutive exposures on the same TIL left on the drum	
Screening	300 lpi maximum linescreen (0.4% to 99.6%) <b>Kodak DigiCap NX Screening</b> <b>Kodak Maxtone Screening</b> and <b>Kodak Maxtone CX Screening</b> <b>Kodak HyperFlex Ready Imaging Technology</b> <b>Kodak Staccato Screening</b>	

# Kodak Flexcel NX Wide System specifications (continued)

	Kodak Flexcel NX Wide-C Imager	Kodak Flexcel NX Wide Imager
Specifications for imaging Kodak DITR 4401 Film		
Speed-Imaging time	5.5 minutes per 23.6 x 29.5 in (600 x 750 mm) 6.7 minutes per 33 x 44.2 in (838 x 1,123 mm) 12 minutes per 43.2 x 61.2 in (1,097 x 1,554 mm)	AVAILABILITY PENDING
Media sizes	23.6 x 29.5 in (600 x 750 mm) 33 x 44.2 in (838 x 1,123 mm) 43.2 x 61.2 in (1,097 x 1,554 mm)	
Repeatability	16 microns between 2 consecutive exposures on the same film left on the drum	
Resolution	2400 dpi	
Screening	200 lpi maximum linescreen (2% to 98%)	

Specifications for imaging 830 nm thermal IR digital offset plates with Hybrid Option									
Throughput (by plate size mm)	940 x 572	1448 x 572	1030 x 800	1524 x 1143	940 x 572	1448 x 572	1030 x 800	1524 x 1143	2070 x 1562
Plates per hour:									
<b>S-speed</b>					13.5	9.6	12.5	8.1	7.0
<b>F-speed</b>	14.7	9.1	13.0	8.6	21.8	16.4	20.5	15.6	12.4
<b>V-speed</b>	26.1	16.3	22.3	15.8	27.2	21.3	25.8	20.4	16.6
Repeatability	16 microns between 2 consecutive exposures on the same plate left on the drum								
Accuracy	± 35 microns (1.4 mil) between 2 plates imaged by different devices								
Registration	25 microns (1.0 mil) between image and edge at registration points								
Media thickness	0.008 - 0.015 in (0.20 - 0.40 mm)								
Media sizes	<i>Around drum dimensions:</i> Min. 15.5 in (394 mm), Max. 52 in (1,325 mm)  <i>Along drum dimensions:</i> Min. 15.5 in (394 mm), Max. 64 in (1,630 mm)				<i>Around drum dimensions:</i> Min. 15.5 in (394 mm), Max. 62.9 in (1,600 mm)  <i>Along drum dimensions:</i> Min. 15.5 in (394 mm), Max. 82 in (2,083 mm)				
Screening	450 lpi max. linescreen 20 micron <b>Kodak Staccato</b> Screening								

## Kodak Flexcel NX Wide Laminator

Dimensions (H x W x D)	34 x 107 x 52 in (87 x 273 x 133 cm), Table height: 32 in (81 cm)
Weight	1,540 lb (700 kg)
Supported plate sizes	610 x 762 mm; 800 x 1,067 mm; 1,067 x 1,524 mm

## Kodak Flexcel NX Wide System

Operating conditions	
Temperature	63° - 86°F (17° - 30°C)
Humidity	40% - 60% relative humidity, non-condensing

### To learn more about solutions from Kodak:

Visit [www.kodak.com/go/packaging](http://www.kodak.com/go/packaging)

Produced using **Kodak** Technology.

Eastman Kodak Company  
343 State Street  
Rochester, NY 14650 USA

©Kodak, 2013. Kodak, DigiCap, Flexcel, Hyperflex, Maxtone, Prinerogy Powerpack, SQUARESpot, and Staccato are trademarks of Kodak.

Subject to technical change without notice.

W.PS.142.0513.en.03



**Kodak**

**YELLOW** CHANGES EVERYTHING