

1

Your wireless setup guide

Perform each of these step-by-step procedures to set up your wireless Kodak digital picture frame. Then view and share pictures and videos from your computer – on your frame – wirelessly!

1. Install and set up Windows Media player 11 [page 2](#)
2. Install and set up EasyShare software [page 10](#)
3. Set up your wireless frame [page 13](#)
4. Share your media with your frame [page 17](#)
5. Set up your gallery account (US, Canada, and Europe only) [page 21](#)

If you have problems with your wireless setup or connection, see Troubleshooting starting on [page 25](#).

2

Install the software

Your frame and Windows Media player 11

IMPORTANT: *The EasyShare digital picture frame uses your wireless network and Windows Media player 11 to access the pictures on your computer. If you do not have Windows Media player 11 on your computer, or you have an earlier version, the EasyShare software CD packed with your frame automatically lets you install Media player 11.*

What if I already have Windows Media player 11? Go to [page 8](#) to set up media sharing.

How do I find out what version of Windows Media player I have? To find your version number, see the FAQs on [page 25](#).



- 1 Insert the EasyShare software CD.
- 2 Go to page 2 to install Windows Media player 11.

OR

Go to page 8 to set up media sharing (if you already have Windows Media player 11).

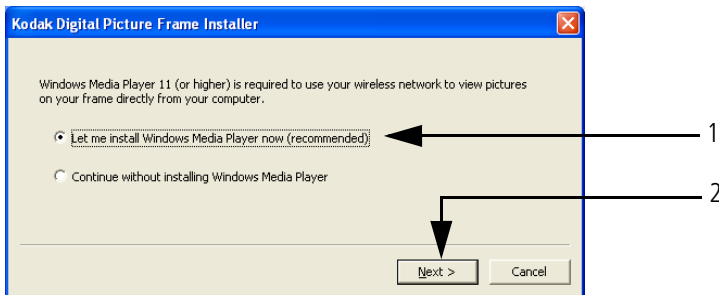
NEXT: [Download and install Windows Media player 11](#)

NEXT

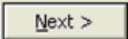
Download and install Windows Media player 11

Begin the download. You must be connected to the Internet.

If this screen does not appear, you already have Windows Media player 11, or higher, on your computer. Go to [page 8](#) to set up media sharing.



1 Select *Let me install Windows Media player now.*

2 Click .

Your browser opens and you are automatically connected to the Microsoft Windows Media player download page.

Install the software

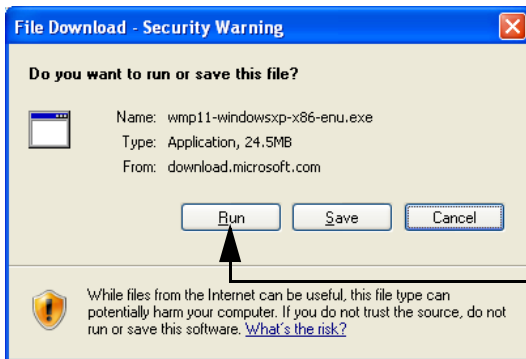


3 Click **Download Now**.

Do not close the Windows Media player installer window during the installation.

TIP—if an error screen appears, click OK on the error screen, then click Cancel on the Digital Picture Frame Installer screen. Restart the installation by ejecting the CD and reloading it.

Continue with the download of Windows Media player 11.



- 4 Click to start the download.

The download usually takes less than a minute with high-speed Internet access. Dial-up connections take longer.

A progress screen appears as the installation files are downloaded to your computer.

TIP—if the progress screen does not appear, click [Click here if your download did not begin](#).



- 5 Click again.

A progress screen appears as the installation files are extracted on your computer.

- 6 In the *Validate your copy of Windows* screen, click to confirm that you have a valid copy of Microsoft Windows operating system.

- 7 In the *Thank you* screen, click to accept the supplemental license for Windows Media player 11.

The installation begins. A progress screen appears and monitors the installation. The Windows Media player 11 Welcome screen opens.

NEXT: [Set up Windows Media player 11](#)

→ NEXT

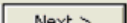
Set up Windows Media player 11

Windows Media player is installed! Now choose your settings.

- 1 On the *Welcome* screen, select *Custom Settings*.

We **strongly** recommend that you select *Custom Settings*. If you choose *Express* settings, the setup will take significantly longer (up to an hour).

- 2 Click  .

- 3 In the following setup screens (*Select Privacy Options; Customize the Installation Options; Select the Default Music and Video Player*), we recommend that you accept all options as they are presented, and then click  .

- 4 If the *Choose an Online Store* screen appears, select *Don't set up a store now*.

We **strongly** recommend that you **do not** choose to set up a store now. If you do, the setup will take significantly longer (up to an hour).

- 5 Click  .

A progress screen monitors the setup. When the setup is complete, Windows Media player 11 opens and displays available media files.

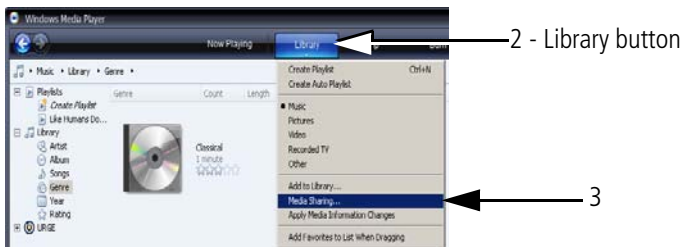
NEXT: [Share media in Windows Media player 11](#)

—————  NEXT

Share media in Windows Media player 11

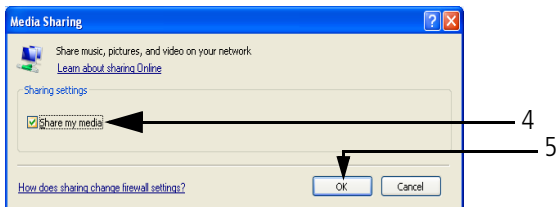
Set up Media Sharing so your frame and Windows Media player recognize each other.

- 1 Open Windows Media player 11 (if you already had Windows Media player 11 installed and bypassed the installation, [page 2](#)).



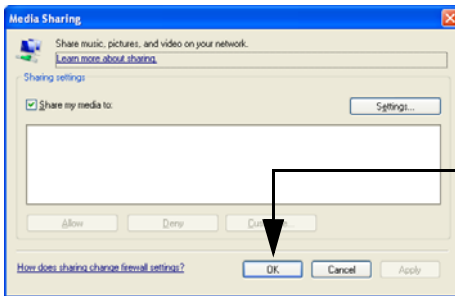
- 2 Click the  button in the top menu bar.

- 3 Select *Media Sharing* from the drop-down menu.



- 4 In the Media Sharing screen, select *Share my media*.

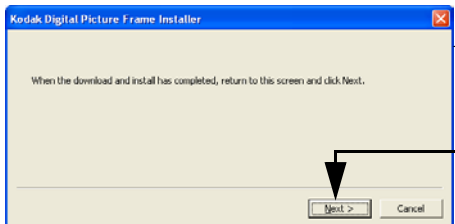
- 5 Click .



We'll return to this screen later in the setup.

6 Click  again. Your Windows Media player 11 setup is complete!

7 Close Windows Media player by clicking  in the top-right corner of the screen, then close your browser window.



You may have seen this Digital Picture Frame Installer screen during your setup. It has been open, but hidden by other setup screens.

8 Click  to start the Kodak EasyShare software Install Wizard.

NEXT: [Install and set up EasyShare software](#)

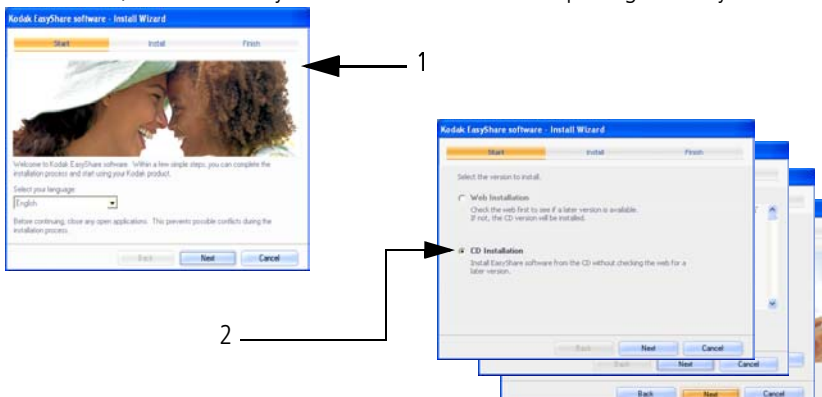


Install and set up EasyShare software

The CD that was packaged with your frame contains a special version of Kodak EasyShare software that lets you copy pictures between your computer and your frame.

Install EasyShare software now. Even if you already have EasyShare software on your computer, follow these installation instructions to upgrade to this special software version.

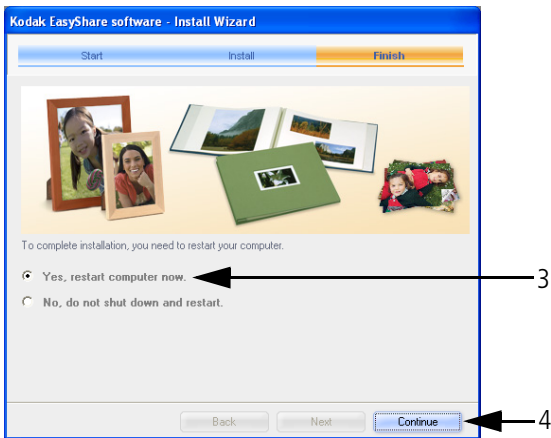
The Kodak EasyShare software Install Wizard opens on your computer. If you don't see this first screen, reload the EasyShare software CD that was packaged with your frame.



1 Follow the on-screen instructions to install the software.

2 **IMPORTANT:** On the *Select a version to install* screen, make sure you select *CD* installation, not *Web* installation.

When prompted, take a few minutes to electronically register your frame and software. To register later, visit www.kodak.com/go/register.



IMPORTANT: For Windows XP operating systems, you must restart your computer to complete the installation.

3 Select *Yes, restart computer now*.

4 Click **Continue**.

Your computer shuts down. EasyShare software opens when the computer restarts.

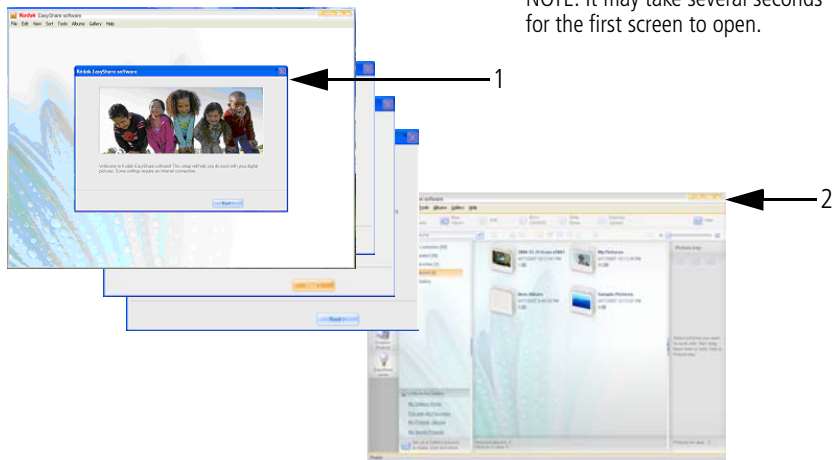
NEXT: [Set up EasyShare software](#)

NEXT

Install the software

Set up EasyShare software

NOTE: It may take several seconds for the first screen to open.



- 1 Follow the on-screen instructions to set up EasyShare software.

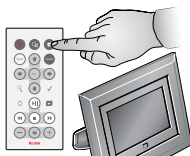
When the setup is complete, EasyShare software opens and your pictures are displayed in My Collection.

- 2 Close EasyShare software by clicking  in the top-right corner of the screen.

NEXT: [Set up your wireless frame](#)

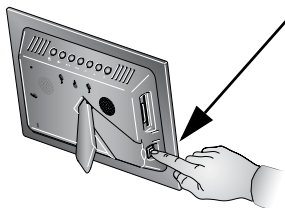
NEXT 

3 Set up your wireless frame




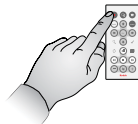
In this section, all buttons and controls, unless otherwise specified, are on the remote control that was included with your frame.


Turn on the frame and select your language



- 1 Press the power switch to On.

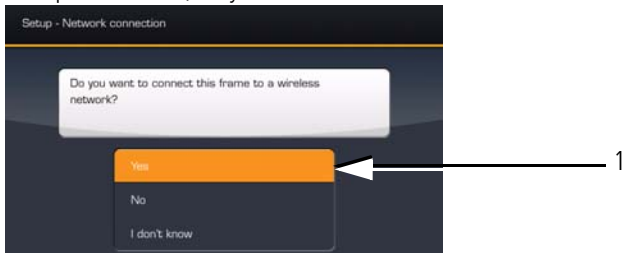
You can leave the switch in the On position and then use the Power button  on the remote control to turn your frame on and off.




- 2 Press  to highlight your language.
- 3 Press OK.

Connect to your wireless network

The setup screen asks, *Do you want to connect this frame to a wireless network?*



1 Press  to highlight Yes.

If you select *No*, you can connect to your wireless network later. See [page 26](#).


2 Press OK.

The frame scans for available wireless networks.




NOTE:

If the scan finds multiple networks, your network is usually the first one listed, with the highest %.

3 Press  to highlight your network, then press OK.

Enter security key (if you have security enabled)

If you have wireless network security enabled, the on-screen keyboard appears and you are prompted to enter your security key. **If not,** —————> **go to step 6.**

- 4 Enter your security key on the on-screen keyboard. On the remote control, press  to highlight each character. Press OK after each character.



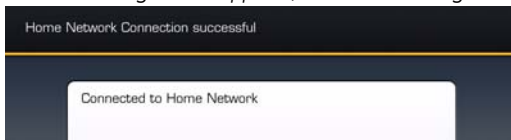
NOTE: A **WEP** key can be either:

- 5 or 13 characters (0-9, A-Z, some special characters, case sensitive),
 - 10 or 26 characters (0-9, A-F, not case-sensitive).
- A **WPA** key is 8-63 characters, case sensitive.

The person who set up your network can provide you with this information.

- 5 Highlight Done on the keyboard, then press OK on the remote control.

The Connecting screen appears, then acknowledges that you are connected!



Set up your wireless frame

The Scanning screen appears as the frame scans your network and then lists available computers.



6 Press  to highlight your computer, then press OK.

Congratulations, you've completed your network setup!

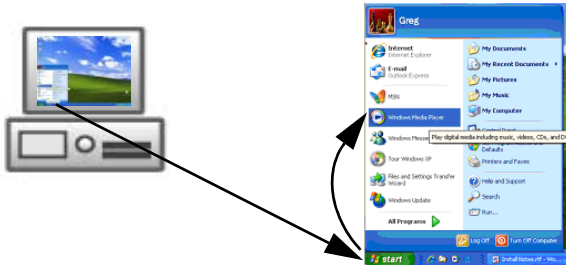
NEXT: [Share your media with your frame](#)



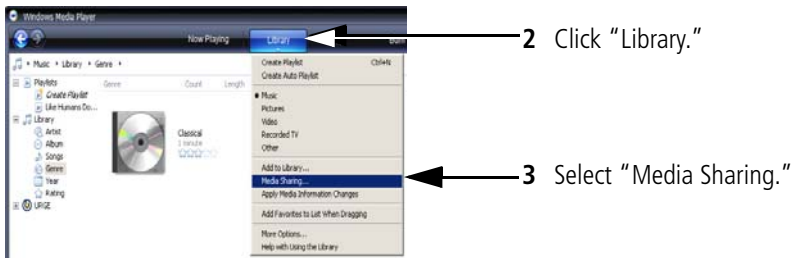
NEXT

Share your media with your frame

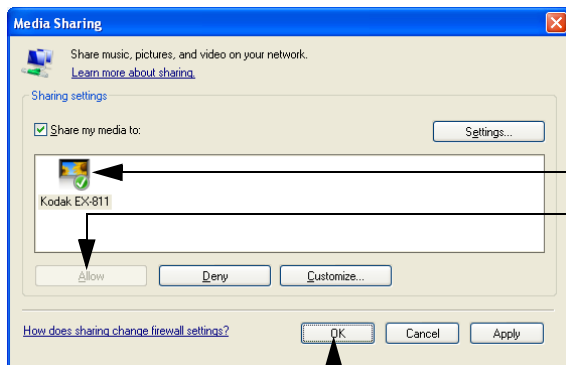
You're almost done! Now return to your computer and open Windows Media player 11. You'll select your frame as a device with which your computer can share media files (pictures, videos, music).



- 1 Open Windows Media player 11. Select *Start > Windows Media Player*.



Set up your wireless frame



4 Select your frame.

5 Select "Allow."

6 Click "OK" to finish and close.

Your frame is now allowed to access the content on your host computer. Note the icon for your frame now has a green check mark.

NEXT: [Add shared folders on your computer \(optional\)](#)

OR

NEXT: [Set up your gallery account, page 21](#)

NEXT 


Add shared folders on your computer (optional)

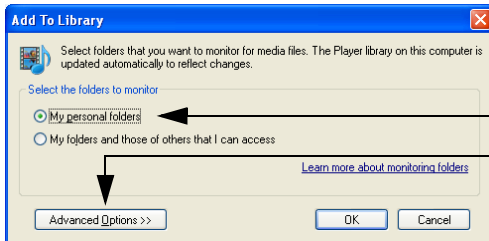
Windows Media player 11 looks for media files (pictures, videos, music) in 2 places on your computer:

- My Documents, these 3 folders: My Music, My Pictures, My Videos
- Shared Documents, these 3 folders: Shared Music, Shared Pictures, Shared Videos

If you have media files in other folders on your computer, share them so you can view them on your frame.

Share folders

- 1 On your computer, open Windows Media player 11.
- 2 Click  in the top menu bar.
- 3 Select *Add to Library* from the drop-down menu.



- 4 Select "My personal folders."
- 5 Click "Advanced Options>>."

Set up your wireless frame

The image shows three overlapping screenshots of Windows Media Player Library dialog boxes with numbered callouts:

- 6** Click "Add." (Callout points to the "Add" button in the "Add To Library" dialog).
- 7** Navigate to the folder you wish to share ("Image Data" in this example). (Callout points to the "Image Data" folder in the "Add Folder" dialog's file list).
- 8** Click "OK." (Callout points to the "OK" button in the "Add Folder" dialog).
- 9** Click "Close." (Callout points to the "Close" button in the "Add to Library by Searching Computer" dialog).

The contents of the shared folder are added to the Windows Media player Library. They are now accessible to your frame. Repeat these steps to share other folders.



4

Set up your gallery account

Display pictures directly from the Kodak gallery via the Internet (this feature is currently limited to customers in the US, Canada, and Europe).


Perform this one-time setup on your frame to connect it to your existing Kodak gallery account. Don't have a Kodak gallery account yet? Visit www.kodakgallery.com.

Begin the setup

- 1 On the remote control, press , then highlight Settings  and press OK.
- 2 Select Kodak gallery and press OK.

The gallery setup screen appears.



- 3 Press  on the remote control to highlight Country, then press OK.
- 4 Highlight your country, then press OK.
- 5 Highlight Username/Email address, then press OK.

Set up your gallery account

The username keyboard is displayed on the frame screen.



- 6 Enter your existing gallery username. Use to highlight each character of your username (usually your email address). Press OK after each character.

IMPORTANT: To back up or erase characters, use the backspace or the Clear key on the keyboard. *DO NOT* use the back button on the remote control or you will lose your entries.

- 7 Highlight Done on the keyboard, then press the OK button on the remote control.
- 8 Highlight Password, then press OK.
- 9 Enter your gallery password. Press OK after each character. Highlight Done, then press OK.

- 10 Press on the remote control. Kodak Gallery appears as a choice on the Home screen. Congratulations, you have completed your gallery setup!

NEXT: [View pictures over your wireless network](#)

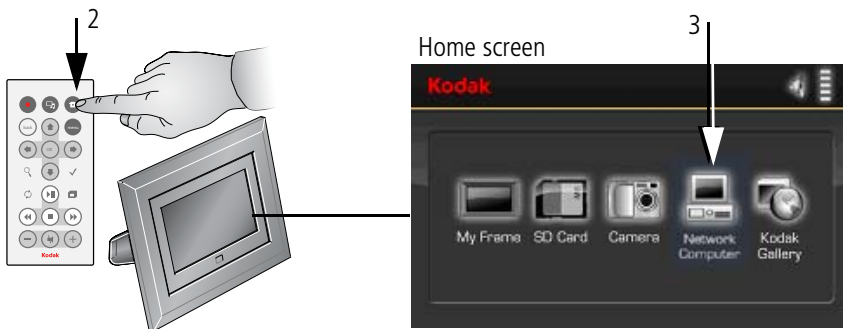
NEXT

5

View pictures over your wireless network




Congratulations! You're ready to view your pictures on your frame - wirelessly!

- 1 Make sure your computer and your picture frame are powered on.



- 2 Press the Home  button.

It may take up to 10 seconds for your Network Computer  to appear on the Home screen.


- 3 Press   to highlight Network Computer , then press OK.

View pictures over your wireless network




- 4 Press  to highlight *Pictures* or *Video*, then press OK.



- 5 Press  to highlight the category of pictures you want to view, then press OK.

"All Pictures" displays every picture that your computer is sharing, without showing folders. The categories are established by Windows Media player 11.



- 6 Pictures are displayed as thumbnails. Press  (on the remote control) to play a slide show.

See the Getting Started Guide for more information about using your frame and viewing your pictures.

6

Troubleshooting FAQs

For more information on setting up and using the wireless features of your frame, visit www.kodak.com/go/digitalframesupport or www.kodak.com/go/wifisupport.

Frequently asked questions

I already have Windows Media player on my computer. Do I have to install it again?

You must have Windows Media player 11, or greater, so your frame can access the pictures on your computer.

Check your Windows Media player version number. (Right-click in the top menu bar, then select *Help > About Windows Media Player*.) If your version is earlier than 11, upgrade to version 11. See [page 3](#).

I already have Kodak EasyShare software on my computer. Do I have to install it again?

The CD that was packaged with your frame contains a special version of EasyShare software that lets your computer share pictures with your frame. Install it to upgrade to this special software version. See [page 10](#).

I lost my Internet connection in the middle of my setup. What should I do?

Reconnect to the Internet and repeat the installation and setup, starting on [page 2](#).

I lost my wireless connection in the middle of the setup. What should I do?

Make sure your wireless connection is live and repeat the setup, starting on [page 13](#).

www.kodak.com/goldigitalframesupport

I can't find my network. Why?


- Is your network set up to broadcast SSID? If so, you must enter your wireless network information manually. The person who set up your network can help you with this information.
- Does your network have security enabled (WEP or WPA)? If so, follow the instructions on [page 15](#).

I can't find my network computer. Why?

- Make sure your router and your computer are on.
- Make sure your computer is on your wireless network. See the documentation that came with your router and your computer.
- Is Media sharing enabled in Windows Media player 11? See [page 8](#).
- Is your frame allowed to share content with your computer? See [page 17](#).

I didn't connect to my network the first time I turned on my frame. Can I do it now?

Yes, you can.

- 1 Press Home  on the remote control, then select *Settings > Network > Manual > Enable/disable connections > Enable*.
- 2 Press the Back button.
- 3 Select *Network > Scan for wireless networks*.
- 4 Continue with step 3 on [page 14](#).

2F6599_en