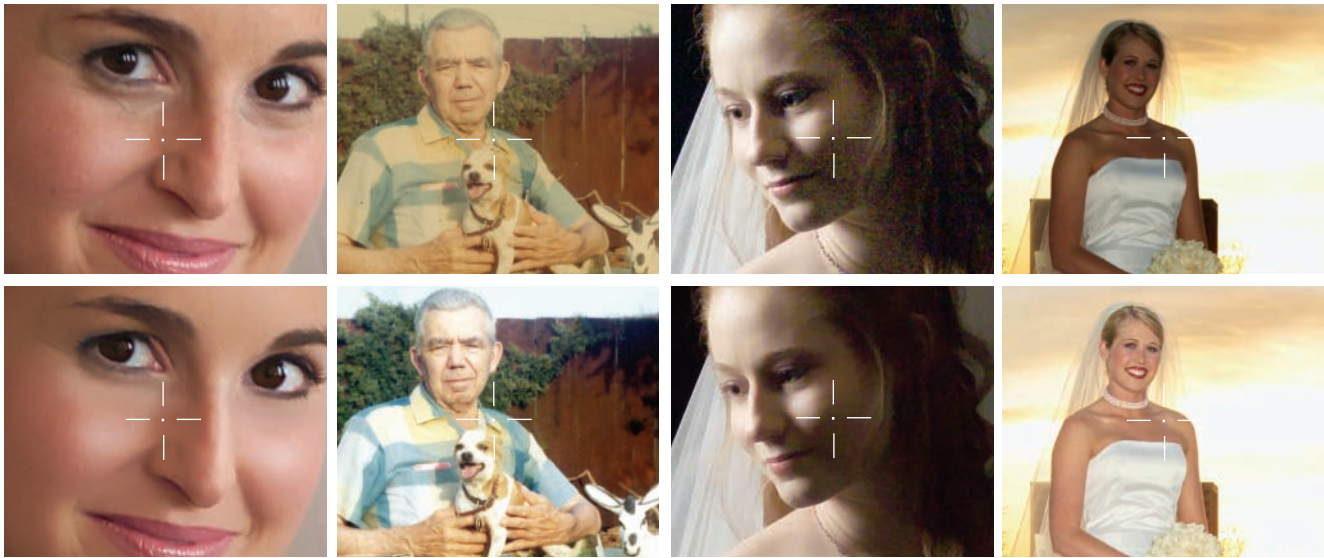


KODAK PROFESSIONAL IMAGE ENHANCEMENT PLUG-INS



Fine-tuning the fine image.

KODAK PROFESSIONAL Image Enhancement Plug-Ins let you quickly and easily improve the most common problems associated with digital images. Whether you are a professional photographer or an ADOBE PHOTOSHOP Software enthusiast, choose one or up to four of these professional tools depending on your photographic content and needs. You can quickly and easily optimize images to improve quality and create even more compelling results.

- ▶ **Reveal critical details buried in shadows**
- ▶ **Reduce distracting digital noise**
- ▶ **Eliminate undesirable color shifts**
- ▶ **Create smooth and pleasing skin tones**

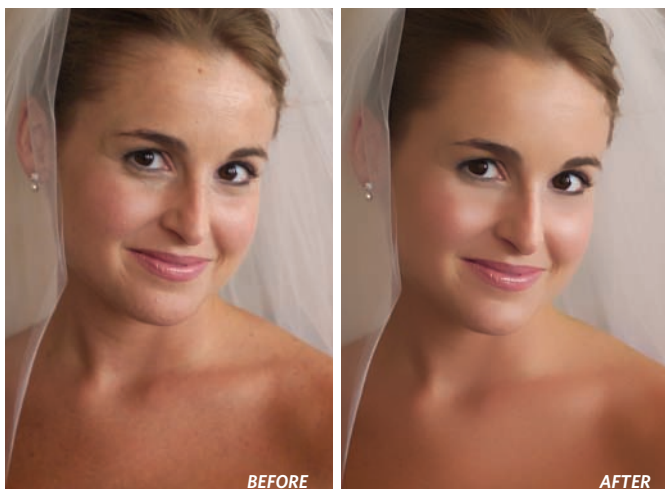


NEW
V2.1

Compatible with WINDOWS VISTA,
MACINTOSH INTEL Processors and
ADOBE PHOTOSHOP CS3

www.kodak.com/go/proplugins

KODAK PROFESSIONAL IMAGE ENHANCEMENT PLUG-INS



KODAK PROFESSIONAL GEM AIRBRUSH PLUG-IN

Smooths skin surfaces

For a quick and powerful way of smoothing skin without blurring or affecting facial-feature detail. Achieve meticulous airbrush effects, automatically, without tedious, time-consuming masking and manual softening. Equalize unflattering facial highlights and shadows—smooth surfaces by reducing harsh shadows and highlights, minimize skin imperfections and other surfaces, while fully preserving details like hair, eyelashes, eyebrows, and the true character of a subject's face. Control image detail at three levels: fine, medium, and coarse. This plug-in can be used with both 8- and 16-bit image files.



KODAK PROFESSIONAL GEM PLUG-IN

Reduces image noise and grain

Image noise can be caused by a variety of factors—digital camera/scanner CCD/sensor noise, high-speed film grain (from scans), adverse lighting conditions, JPEG compression, and image enlargement. With this plug-in, you can isolate and manage noise/grain in highlight and shadow areas without sacrificing image detail or excessive softening. Create portrait studio quality soft-focus effects, and image sharpening that surpasses most typical "unsharp mask" filters. Reduce or remove JPEG compression artifacts, as well as line screening patterns from flatbed scans.



The plug-ins work with ADOBE PHOTOSHOP Software and other compatible image-editing applications (including ADOBE ACROBAT Elements Software and COREL Paint Shop Pro Software). They also work with both MACINTOSH and WINDOWS Operating Systems. All offer straightforward action and batch command options, one-click corrections, and advanced customizable controls.

The plug-ins are designed for professional photographers, graphic artists and designers, photo restoration professionals, and photo retouchers. They also have many uses for PHOTOSHOP professionals.

There's more ... Boost Your Professional Plug-In Capability

For even more unique enhancement capabilities or special effects, try our automatic action scripts called Actions. They work with the professional plug-ins. No charge and downloadable.



Simply load them into the Actions Palette. Then use either a fully automatic mode to affect a selected image or layer, or customize it to fine-tune your results.



KODAK PROFESSIONAL ROC PLUG-IN

Restores, corrects, and balances color

Automatically correct, restore, and balance image color brightness and contrast. Proprietary algorithms analyze the color gradients and determine the optimum tonal curve for each color channel to remove the colorcast, tint, and fading. You can correct for the effects of tungsten and fluorescent lighting. This plug-in also restores pleasing density and contrast to black-and-white images. And it optimizes image white balance; and offer automatic or custom control. This plug-in also supports the use of 8- and 16-bit color image files., and full control of image brightness and image contrast (black-and-white clipping) for better color and white-balance corrections.



KODAK PROFESSIONAL SHO PLUG-IN

Optimizes contrast and exposure

By optimizing contrast and exposure to reveal details hidden in highlights and shadows, this plug-in corrects exposure problems in images with backlit subjects and uneven flash illumination, as well as partial shade. Control can be automatic or custom. This plug-in works only on 8-bit color images.

It lets you manipulate both shadow detail lighting and highlight darkening—giving you separate control of the amount of detail to reveal in each area, as well as color saturation.



Images courtesy ©Roy Madearis, Madearis Studio

ROC OUTLAND ACTION

Works with the ROC Plug-In to restore, correct, and balance color of digital images with problems of tinting, color casting, fading, or abnormal lighting. It is best for extremely tinted images with little or no information in one of the color channels.

SHO SPOTLIGHTER ACTION

Works with the SHO Plug-In to reveal details hidden in the shadows and highlights. It emphasizes skin tones and detail areas in the center (or focal point) of your image. It de-emphasizes the outer edges of the image by applying a subtle vignette, leaving the dark and light areas near the edges untouched.

GEM SHARP ACTION

Complements the GEM Plug-In to reduce image noise and film grain. It preserves image detail and sharpness and reduces noise and grain.

AIR DIMENSIONAL ACTION

Supplements the GEM Airbrush Plug-In to smooth skin surfaces. It adds subtle shadowing detail to areas that may appear too flat. It works on skin-tone areas, as well as background elements, to bring back shadow dimensionality while maintaining the smoothing effects of the plug-in.

KODAK PROFESSIONAL IMAGE ENHANCEMENT PLUG-INS

"What they're saying..."



I specialize in photographing weddings and social events where my clients typically select an average of 100-150 images per album. As a digital photographer who handles my own enhancement to images prior to output, I have saved HOURS by incorporating the GEM Airbrush Plug-In within my studio "back end."

Michael A. Jonas, M. Photog, CR., CPP
michael@jonasphoto.com



Many clients bring old photographs for us to restore from the 1950s and 1960s that exhibit strong discoloration. The ROC Filter provides us an almost instant "fix" to this problem. The ease of combining the ROC Filter with minimal PHOTOSHOP

Cloning allows us to produce corrected images within a short window of time.

Roy Madearis, Master Photographic Craftsman
Madearis Studio
www.madearis.com

DON'T TAKE OUR WORD FOR IT. TRIAL THEM.

With our FREE trial versions, you can download and use your own images for an actual "hands on" experience of any or all of the plug-in's capabilities. The trial versions are fully functional, but add a watermark to your "processed" image. The watermark cannot be removed from processed and saved trial images, so be sure to save a copy of your images before using any of the trial versions.

The power of the KODAK Plug-In approach is that it leverages the ADOBE PHOTOSHOP Software application, delivering time-savings, automation, and selective blending.

SPECIFICATIONS

WINDOWS OS

- PENTIUM II or better with at least 256 MB of RAM PENTIUM II or better with at least 256 MB of RAM
- WINDOWS 2000, XP Home, XP Professional, Vista
- Monitor display resolution set for 800 x 600 pixels or higher

MACINTOSH OS

- POWERPC® G4 or G5 or multicore INTEL Processor with at least 512 MB of RAM
- MACINTOSH Mac OS X v.10.4
- Monitor display resolution set for 800 x 600 pixels or higher

IMAGE EDITING APPLICATIONS

WINDOWS SUPPORTED HOST APPLICATIONS

- PENTIUM II or better with 256 MB of RAM
- WINDOWS 2000, XP Home, XP Professional, VISTA
- ADOBE PHOTOSHOP 5.5, 6.0, 7.01, CS, CS2 and CS3
- ADOBE PHOTOSHOP Elements 4.0 and 5.0
- ADOBE PHOTODELUXE Home Edition 4.0
- ADOBE PHOTOSHOP LE 5.0
- JASC Paint Shop Pro 7.04, 8.1 and 9.01.1
- COREL Paint Shop Pro X and XI
- (may also work with other PHOTOSHOP plug-in compatible applications)

MACINTOSH Universal Version for PHOTOSHOP CS2 and CS3 Supported Host Applications

- ADOBE PHOTOSHOP CS2 or CS3
- (may also work with other PHOTOSHOP plug-in compatible applications)

MACINTOSH PPC Version for PHOTOSHOP CS2 and Earlier Supported Host Applications

- ADOBE PHOTOSHOP 7.01, CS or CS2
- ADOBE PHOTOSHOP Elements 4.0
- (may also work with other PHOTOSHOP plug-in compatible applications)

Visit our website www.asf.com to

- ▶ View tutorials and our sample images
- ▶ Download free trial versions of our plug-ins and our Action Scripts
- ▶ Purchase license codes
- ▶ Or, order a CD of our trial versions if you do not wish to download our plug-ins



Kodak Professional
Imaging Solutions

▶ www.asf.com