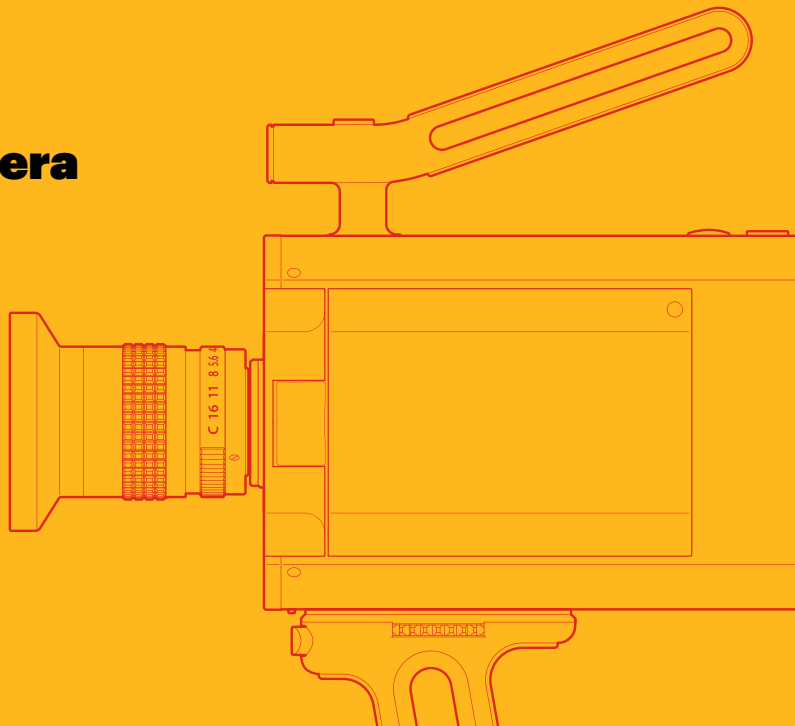




# Super 8 Camera



**ENGLISH**

## **Super 8. Better than perfect.**

There are some moments that digital just can't replicate. The incomparable warmth, depth, and beauty of film simply has no equal. These are the moments that inspire us, that move us forward, and enlighten us. Merging analog magic with digital convenience in the most accessible and easy-to-use film format ever invented.

The new KODAK Super 8 camera is the most advanced camera in its category. Industrial design, lens options and a complete system from action to cut. It's more than a camera. Welcome to your new platform for creativity. Nice to see you again, Super 8.

[www.kodak.com/go/super8](http://www.kodak.com/go/super8)

## Contents

Overview	4
Install the Battery	6
Charge the Battery	7
Install the Lens	8
Install the Pistol Grip	9
Setup and Navigation	10
Load the Film Cartridge	12
Set Frame Rate	14
Set Run Mode	17
Viewfinder Overview	18
Adjust Exposure, Focus, and Shoot	22
Unload and Process Film	23
Recording Audio	24
Transfer Audio Files	27
You are good to go when...	28
Proper Care of Your Camera	29
Warranty	30

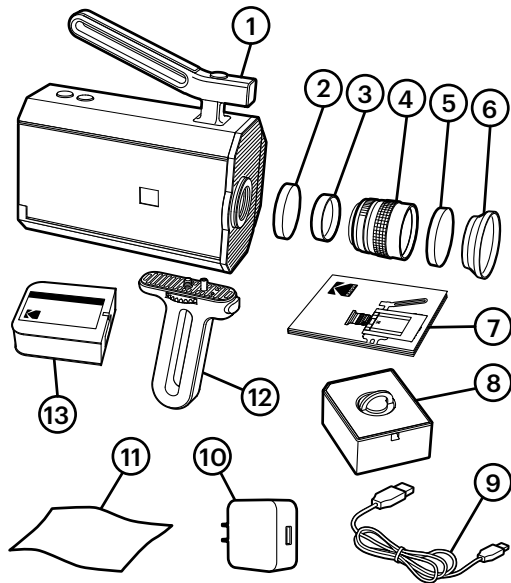
## Registration

4	Register your new KODAK Super 8 Camera to
6	activate your warranty and stay up-to-date on
7	special offers, tips and additional services.

[www.kodak.com/go/super8](http://www.kodak.com/go/super8)

# What's in the Box

- 1** Super 8 Camera
- 2** C mount Cap
- 3** Lens Cap
- 4** Wide Angle 6mm Lens 1:1.2
- 5** Lens Cap
- 6** Lens Hood
- 7** Getting Started Guide
- 8** Super 8 Camera Battery with Cover
- 9** Micro USB Charging Cable
- 10** KODAK Super 8 Camera USB Power Adapter (US / UK / EU Version)
- 11** Cleaning Cloth
- 12** Pistol Grip
- 13** KODAK TRI-X Reversal Film

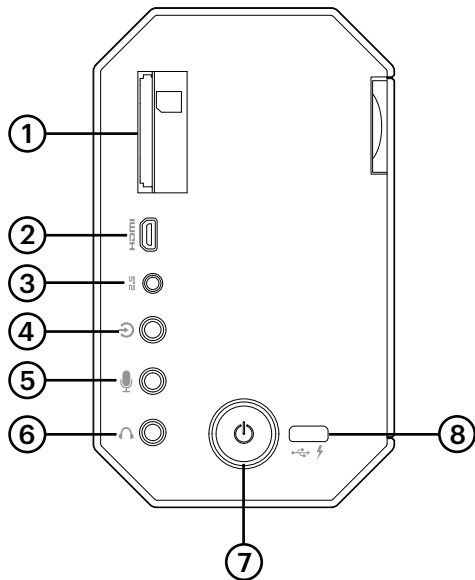


- 1** Run Button
- 2** Function Button
- 3** Top Handle
- 4** Lens
- 5** Lens Hood
- 6** Pistol Grip
- 7** Thumbscrew
- 8** Cartridge Window
- 9** Film Compartment
- 10** Film Door
- 11** Battery Compartment
- 12** LCD Viewfinder
- 13** Menu Button
- 14** Confirm Button
- 15** Touch Wheel



# Overview - Back Panel

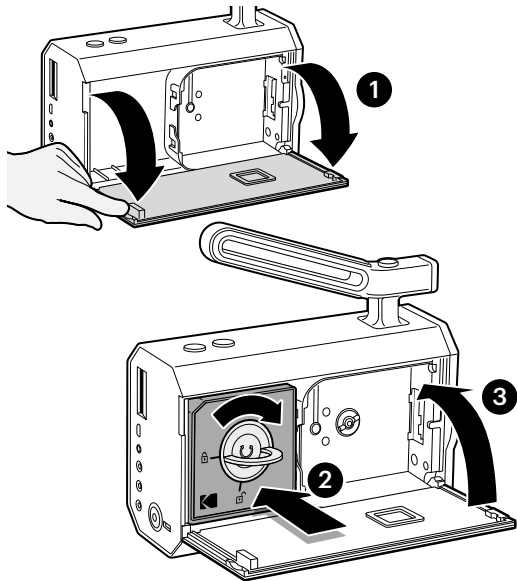
- 1 SD Card Slot (audio recordings / firmware updates / file transfer)
- 2 Micro HDMI (external display)
- 3 2.5mm Jack (remote access)
- 4 3.5mm Line Input
- 5 3.5mm Mic Input
- 6 3.5mm Headphone Output
- 7 Power Button
- 8 Micro USB (charging)



# Install the Battery

*IMPORTANT: The camera will NOT work without a battery. The battery MUST be fully charged BEFORE using the camera for the first time. Use only a genuine KODAK Super 8 Camera Battery.*

1. Open the film door.
2. Insert the battery and lift and twist the handle clockwise to lock it into place.
3. Close the film door.



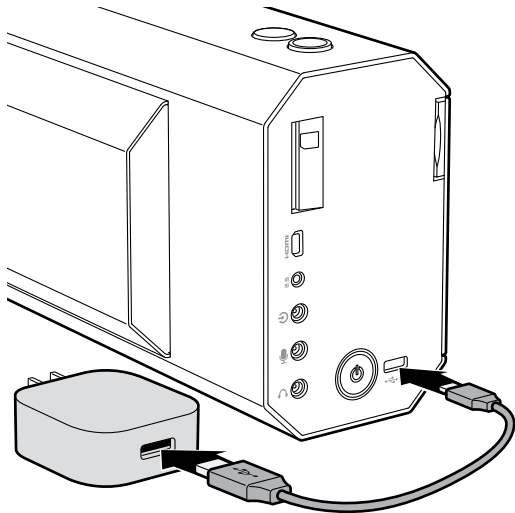
## Charge the Battery

Connect one end of the Micro USB Charging Cable to the camera and the other end to the USB Power Adapter. Plug the adapter into a wall outlet.

The camera power button light will turn red when charging and will turn green when fully charged (about 3.5 hours).

*IMPORTANT: Use only the Super 8 Camera USB Power Adapter supplied with the camera.*

*NOTE: Spare batteries are available separately.*





# Install the Lens

1. Remove and save all lens and camera caps.

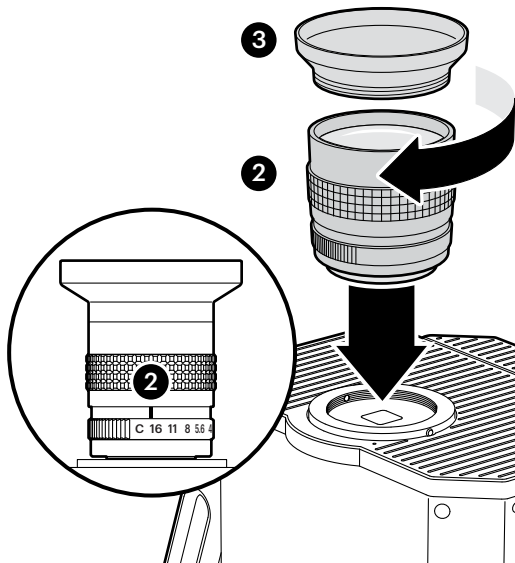
*IMPORTANT: Only use C-mount lenses that are flush with the thread. CS-Mount lenses will damage the thread.*

2. With the lens mount facing up, carefully attach the lens by turning it clockwise until secure. The index line must be oriented at the top of the camera.

*WARNING: Over-tightening the lens can damage the mount and change the focus of the camera.*

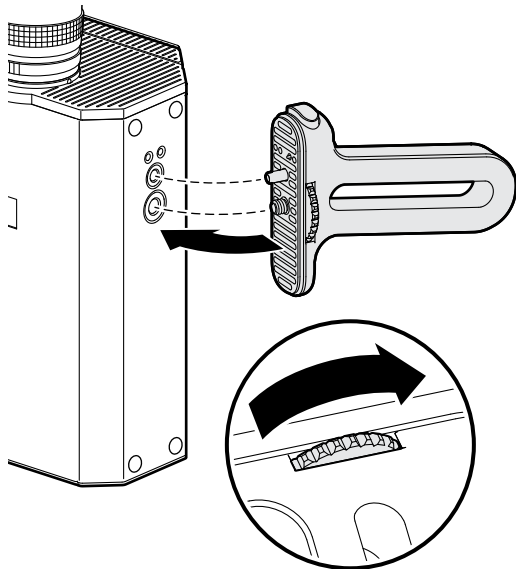
3. Install the lens hood (optional): Carefully screw hood into end of lens until secure.

*WARNING: Never release or change any of the visible screws on the lens or at the mount.*



## Install the Pistol Grip

To install the pistol grip, align it with run button towards front of camera. Turn the thumbscrew until tight.



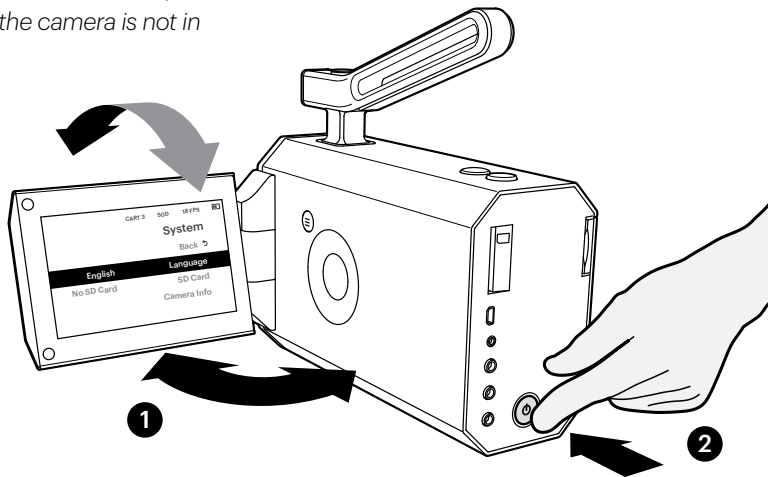
## Power On and Setup

1. Open the LCD viewfinder.
2. Press the power button to turn the camera on.

*TIP: To prevent damage to the LCD screen, close the LCD viewfinder when the camera is not in use.*

## Power Off

1. Press and hold the power button for approximately 5 seconds.
2. Camera to completely power down.



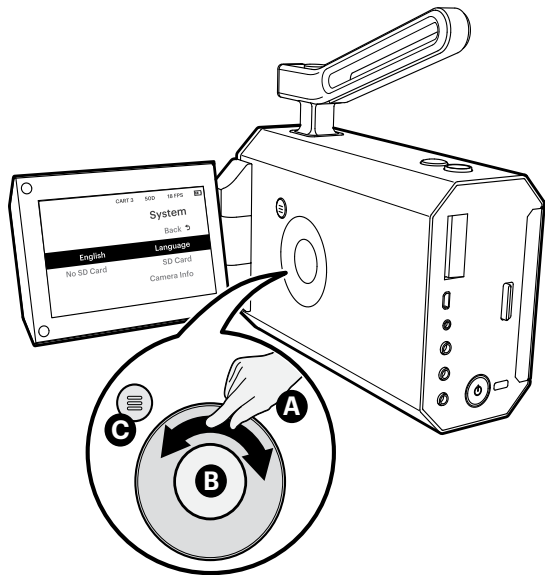
# Setup and Navigation

1. Go to the System screen.
2. Set your Language.

*A: Drag your finger around the touch wheel to navigate through a list - clockwise to scroll down, counter clockwise to scroll up.*

*B: Press the confirm button to choose an item.*

*C: Press the menu button to toggle between the menu and the viewfinder display.*

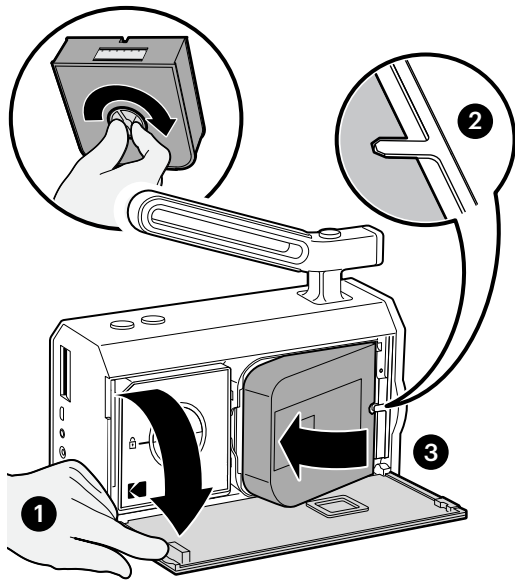


## Load the Film Cartridge

Before you load the cartridge, turn the transport wheel clockwise to take up slack in the film.

*IMPORTANT: Turning the wheel counterclockwise will damage the cartridge.*

1. Open the film door.
2. With the power on, insert the cartridge, with the notches toward the front of the camera and the label facing out. Align the cartridge notch with the registration pin.
3. Push cartridge down until it snaps into place.
4. Close the film door.



# Create Cartridge and Set Film Type

With the power on, the camera detects when a cartridge has been loaded. The Add Cartridge screen will display.

1. Select Create to create “Cartridge1”.  
You’ll be reminded to mark the cartridge later with that name/number.
2. Select Film Type and then select the type you loaded. The camera automatically adjusts the exposure range for each film type.
3. If you select “Other Film” the camera light meter is disabled, you can expose any film individually by using an external light meter in cine mode.
4. Selecting “Other Film” will simplify cartridge changes by reducing menu selection steps.

*TIP: Shoot a practice roll of film to get familiar with your camera and its functions.*

Add Cartridge	
Cancel ↩	
Cartridge 1	Create
50D	Film Type
	Use Previous

Add Cartridge   Film Type	
Back ↩	
KODAK TRI-X	
KODAK EKTACHROME 100D	
KODAK VISION3 50D	
KODAK VISION3 200T	

# Set Frame Rate

1. Go to the Camera screen.
2. Select Run Button.  
Choose the primary frame rate.

FPS = Frames Per Second

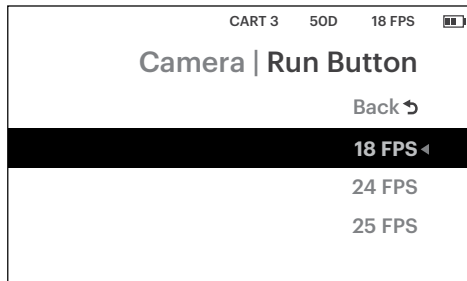
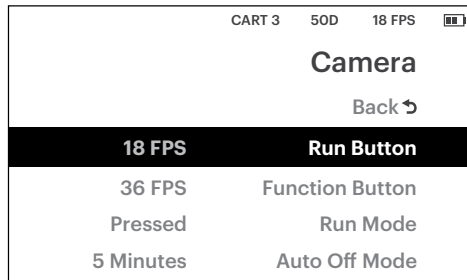
18 FPS: ~ 3 minutes, 20 seconds run time (default)

24 FPS: ~ 2 minutes, 30 seconds run time

25 FPS: ~ 2 minutes, 24 seconds run time

36 FPS: ~ 1 minute, 40 seconds run time  
(for slow motion on playback)

*IMPORTANT: Audio recording is only available for frame rates of 24 FPS and 25 FPS.*

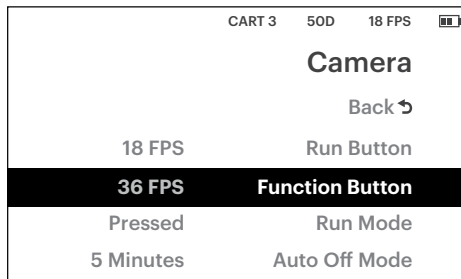


## Set Alternative Frame Rate (Function Button)

You can temporarily change the frame rate during a scene with the function button. For example, while shooting at 18 FPS, you can switch to 36 FPS for a slow motion effect on playback.

1. From the Camera menu, select Function Button and choose the frame rate.

*NOTE: The default value is 36 FPS.*



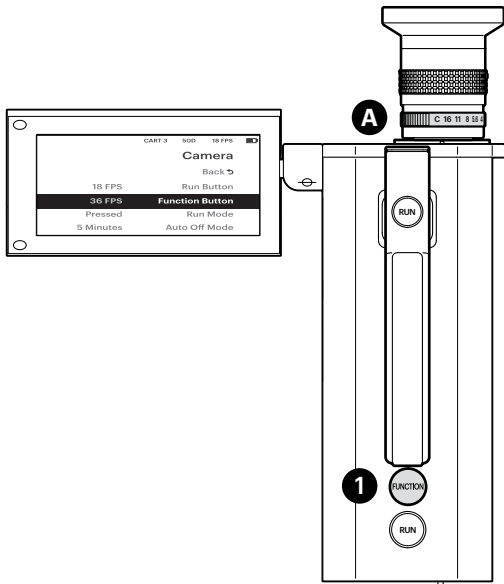


## Use Alternative Frame Rate (Function Button)

1. When shooting, press and hold the function button (while run is still engaged) to change the frame rate.

*Filming tip: Changing the frame rate influences the exposure; you may need to adjust the aperture (A) by  $+\frac{1}{2}$  stop from 18 to 24/25, or  $+1$  stop from 18 to 36 FPS.*

2. Release the function button to return to the original frame rate.



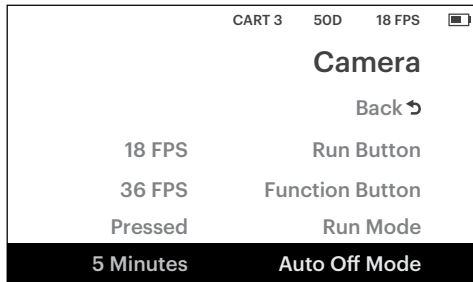
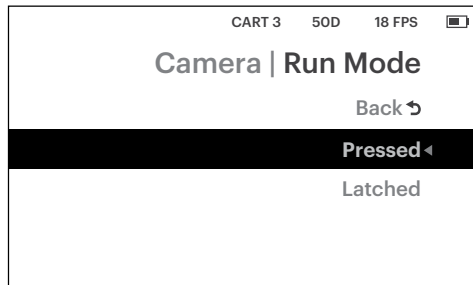
## Set Run Mode

The run button's Run Mode can be set to:

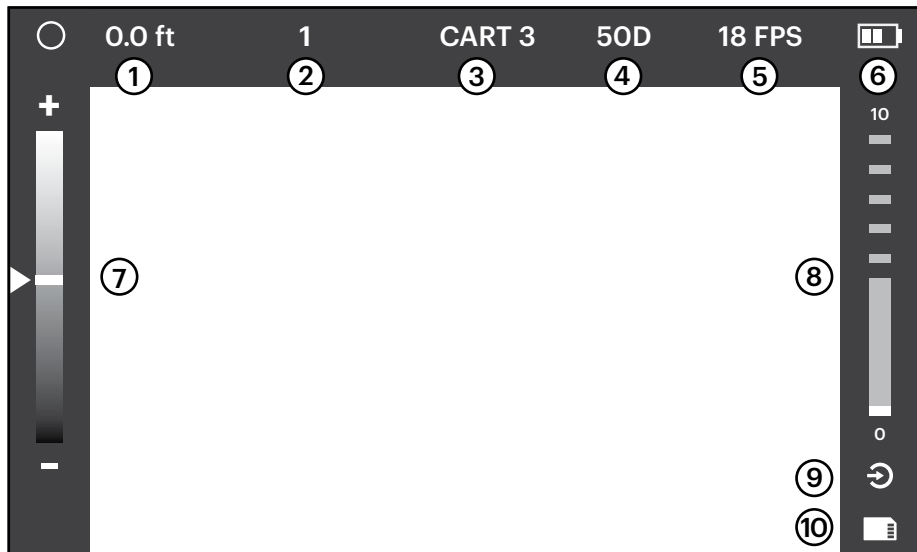
- Pressed: press and hold the run button to shoot film, and release the button to stop.
- Latched: press and release the run button to start shooting, then press and release again to stop.

## Auto Off Mode

- Camera powers off after 15 minutes of idle time. This is the default setting which can be changed in the menu "Camera". This mode helps conserve power when the camera is not in use.
- Press the Power button to turn camera on.



# Viewfinder Overview



# Viewfinder Overview

- 1 Film Counter:** will turn red when the cartridge is down to the last 5 feet (1.5 m), that is, 10-20 seconds remaining, depending on FPS. Select feet or meters in Viewfinder menu. (Viewfinder > Film Counter)
- 2 Scene Counter:** incremented each time you press the run button. It starts at 1 for each new cartridge. (Viewfinder > Scene Counter)
- 3 Cartridge Number:** the number assigned when you loaded and created a new cartridge
- 4 Film Type:** the cartridge type you selected
- 5 Frame Rate:** the frame rate (for run button, or function button when pressed)
- 6 Battery condition:** battery charge remaining
- 7 Light Meter:** shows light level; adjust exposure accordingly (Viewfinder > Light Meter)

- 8 Volume Meter:** shows volume level for external mic or line input (Audio > Volume Meter)
- 9 Audio Input Type:** displayed if external mic or line input present (Audio > Input Type)
- 10 SD Card:** displayed if SD Card present



*Reminder: Press the menu button to toggle between the menu and the viewfinder display.*

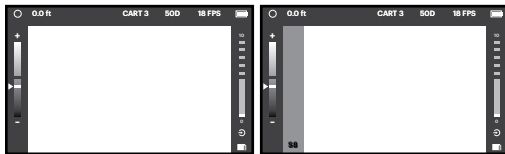
# Compose the Scene (Viewfinder)

The camera always exposes the film in an Extended Super 8 gate frame.

*NOTE: The Extended Super 8 gate frame is closer to a 16:9 format; a regular Super 8 gate frame is closer to a 4:3 format.*

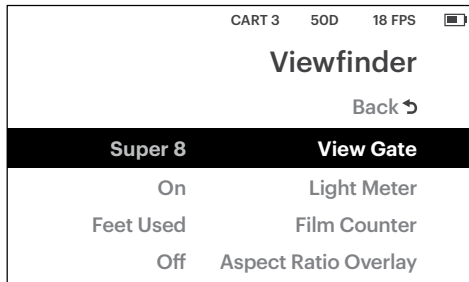
You can set the viewfinder to simulate a Super 8 frame with a vertical bar as a visual aid. (Viewfinder > View Gate)

You can then create a Super 8 frame width during post-production.



Extended Super 8

Super 8

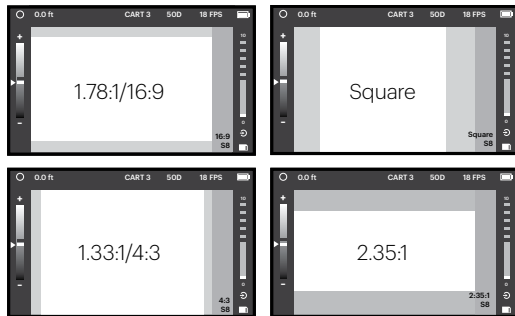


# Aspect Ratio Overlay (Viewfinder)

You can set the viewfinder to frame a specific aspect ratio as a visual aid.

(Viewfinder > Aspect Ratio Overlay)

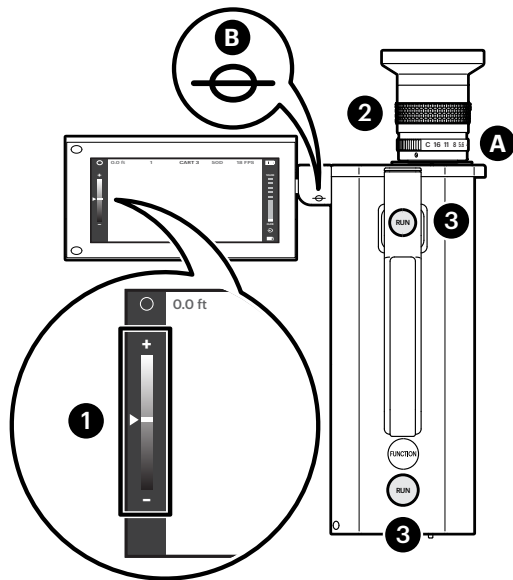
You can then edit to your chosen aspect ratio during post-production.



# Adjust Exposure, Focus, and Shoot

1. Based on the light meter display, adjust the exposure with the aperture ring (A).  
*NOTE: The image in the LCD viewfinder is not affected by the exposure setting; it always displays an optimally exposed image, for use in all lighting conditions.*
2. Adjust focus with the focus ring.  
*TIP: For precise focus to the object, measure the distance to the object from the film plane mark (B) on the camera.*
3. Shoot film: Press the run button to begin shooting. Shooting will continue until you release the run button, or press it again, depending on how you set the run mode.

Each time you start and stop shooting, you create a scene, starting with Scene 1. Scenes are numbered per cartridge.



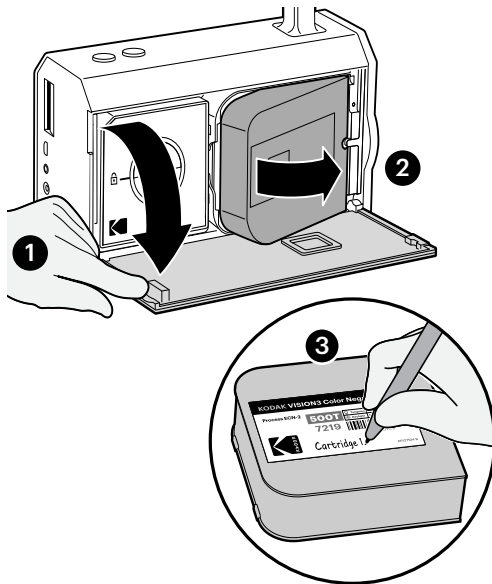
# Unload and Process Film

To unload the cartridge:

1. Open the film door.
2. Lift the cartridge and pull it out.  
*CAUTION: To avoid damaging the film gate, do NOT use any tool to pry the film cartridge from the camera.*
3. If you haven't already labeled the cartridge with the assigned cartridge number (e.g. Cartridge1), do it now. (A permanent marker works well.)

A Super 8 film processing lab directory is available at: [www.kodak.com/go/Super8](http://www.kodak.com/go/Super8)

*TIP: Be sure to note both the cartridge number and barcode number for your records.*





## Recording Audio: SD Card

With an external microphone or audio device, you can record audio to an SD card while shooting film.

An audio file is created each time you press the run button, and is named CxxxSyyyFnnnn.wav:

Cxxx: Cartridge #, starting at C001

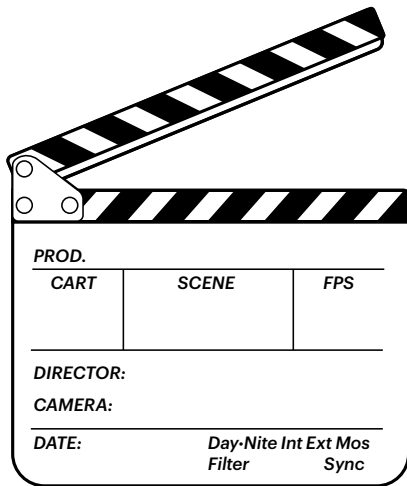
Syyy: Scene #, starting at S001

Fnnnn: Frame counter value

When shooting, use a clapboard with the cartridge number, scene number, and frame rate (FPS). This information will be used to synchronize the audio file during edit.

*NOTE: Audio recording is only available for frame rates of 24 FPS and 25 FPS. There is no audio recording when Function button is pressed.*

*NOTE: Film footage will be exposed without audio.*

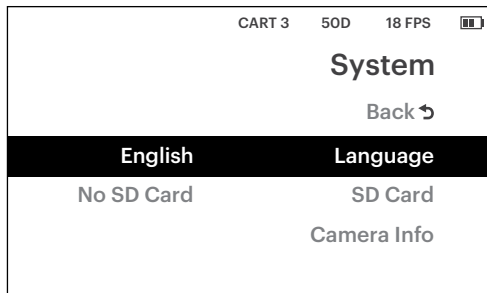
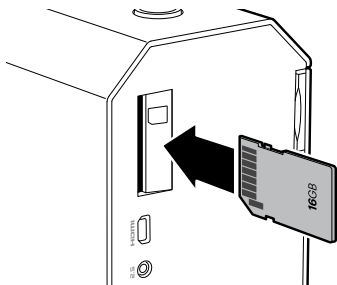


# Insert and Format SD Card



A 16GB SD card (purchased separately) is recommended. Maximum size: 32GB

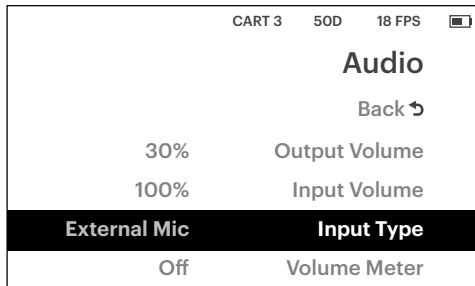
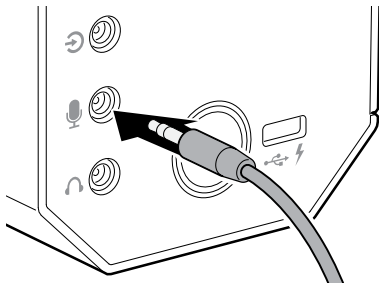
1. Insert the SD card.
2. Format the SD card:
  - a. From the System menu, select SD Card.
  - b. Select Erase and Format.



*NOTE: Average file size for 1 minute of audio - 11MB.*

# Connect Microphone or Line Input

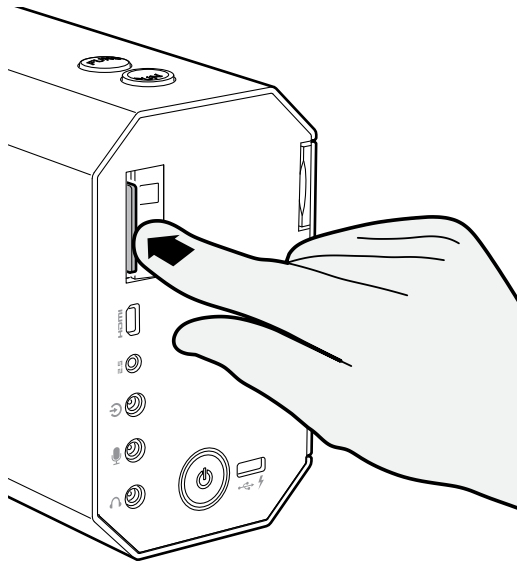
1. Plug an external microphone (sold separately) into the 3.5mm mic input, OR, plug an external audio device (sold separately) into the 3.5mm line input.
2. From the Audio menu, select Input Type (External Mic or Line Input).
3. For external mic: Adjust the Input Volume as needed, and choose whether to display a Volume Meter.  
Line Input: fixed volume input.



## Transfer Audio Files: SD card

1. Gently push in the SD card to eject it.
2. Transfer audio files from the SD card to your computer.

You can synchronize audio with your digital scans using your preferred video editor, such as Final Cut, Premiere, Vegas, etc.



## **You are good to go when...**

1. The battery is fully charged.
2. The camera is powered on.
3. All lens caps have been removed.
4. The film cartridge is fully seated.
5. The lens aperture ring is open (not on "C").

If the LCD screen is black/blank after checking the above:

6. Power on the camera.
7. Reset your film type for optimal exposure.

# Proper Care of Your Camera

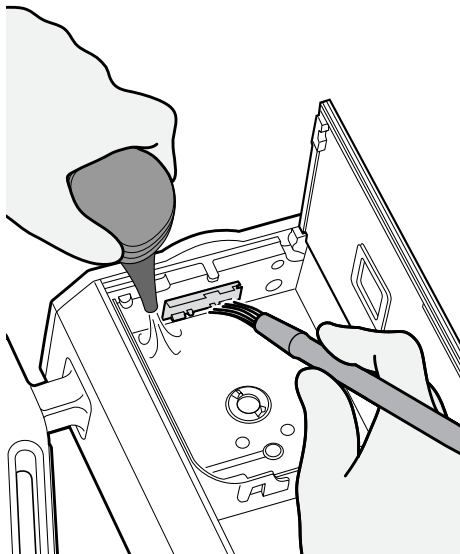
Your camera should be kept in a dry and dust-free environment.

Cleaning: Use a soft microfiber cloth for the body, and a lens cleaning cloth/paper for the lens and LCD.

Clean the film gate after every few cartridge insertions, to remove film emulsion built up and dust.

1. Open the film door, and hold the camera.
2. Carefully clean the gate with a film camera cleaning brush, making sure nothing gets caught in the gate.
3. Use a manual air blow bulb to remove all particles at the gate. You can also carefully blow with an air bulb into the c-mount opening to remove small particles and fluffs on the viewfinder ground glass.  
*WARNING: Never use compressed air out of a can and keep distance to mechanical parts!*
4. Remove the battery from the camera for extended storage.

See Super 8 tips at: <http://www.kodak.com/go/Super8tips>



# Warranty

## LIMITED WARRANTY

THIS IS A LIMITED WARRANTY FOR KODAK SUPER 8 CAMERA ("Product"). THIS WARRANTY IS ONLY VALID WITHIN THE COUNTRY OF SALE OF THE PRODUCT. YOU MUST PRESENT THIS FORM TOGETHER WITH VALID PROOF OF PURCHASE AND PROOF OF PURCHASE DATE (BILL OF SALE) TO OBTAIN WARRANTY SERVICE.

This Eastman Kodak Company ("Kodak") Product is warranted by Kodak to be free from defects in material and workmanship for one (1) year from the date of purchase or usage of a maximum of 100,000 frames shot, whichever comes first.

During this warranty period if the Product is found to be defective in material or workmanship, Kodak or one of its authorized service facilities will at its sole option, either repair or replace this Product without charge, subject to the conditions, limitations and exclusions set forth herein. The option of repair or replacement is Kodak's only obligation.

1. This warranty extends to the original consumer purchaser only and is not assignable or transferable.
2. This warranty shall not apply to any Product which has been subjected to misuse, abuse, abnormal use, excessive use, negligence, alteration or accident, or has had its serial number altered or removed.
3. This warranty does not apply to any defects or damage directly or indirectly caused by or resulting from the use of unauthorized replacement parts, accessories, attachments; service performed by unauthorized personnel or an unauthorized repair center; failure to follow Kodak's operation, maintenance or repacking instructions; failure to use items supplied by Kodak (e.g., adapters, cables); circumstances beyond Kodak's control or claims made after the duration of this warranty.
4. This warranty does not apply to the batteries and software driver that accompanies this product, film or film processing.

5. Warranty Service is only available within the country where the Products were originally purchased. Customer may be required to ship Products, at customer's expense, to the authorized service facility within the country of purchase.
6. Warranty service will include labor, necessary adjustments and replacement parts. Replacement parts may be remanufactured or may contain remanufactured materials. If it is necessary to replace the entire Product, it may be replaced with a remanufactured Product in Kodak's sole discretion and at its option. Remanufactured Products, parts and materials are warranted for the remaining warranty term of the original Product or 60 days (up to 16,438 frames) after the date of repair or replacement, whichever is longer.

THIS WARRANTY IS MADE EXPRESSLY IN LIEU OF ALL OTHER WARRANTIES, EXPRESSED OR IMPLIED, INCLUDING BUT NOT LIMITED TO ANY IMPLIED WARRANTY MERCHANTABILITY OR FITNESS FOR A PARTICULAR PURPOSE, AND ALL OTHER OBLIGATIONS OF EASTMAN KODAK COMPANY PROVIDED, HOWEVER, THAT IF THE DISCLAIMER OF IMPLIED WARRANTIES IS EFFECTIVE UNDER APPLICABLE LAW, THE DURATION OF ANY IMPLIED WARRANTIES ARISING BY OPERATION OF LAW SHALL BE LIMITED TO THE SHORTER OF ONE (1) YEAR FROM THE DATE OF PURCHASE OR 100,000 FRAMES SHOT OR SUCH LONGER PERIOD AS MAY BE REQUIRED BY APPLICABLE LAW.

KODAK HEREBY DISCLAIMS ANY AND ALL LIABILITY FOR SPECIAL, CONSEQUENTIAL AND INCIDENTAL DAMAGES ARISING OUT OF OR IN CONNECTION WITH THE SALE, PURCHASE OR USE OF THE PRODUCTS REGARDLESS OF THE CAUSE, ANY BREACH OF THIS WARRANTY OR ANY OTHER CLAIM WITH RESPECT TO THIS PRODUCT, INCLUDING BUT NOT LIMITED TO, CLAIMS OF NEGLIGENCE, STRICT LIABILITY IN TORT OR BREACH OF CONTRACT.

# Warranty

SOME STATES DO NOT ALLOW (A) LIMITATIONS ON HOW LONG AN IMPLIED WARRANTY LASTS OR (B) THE EXCLUSION OR LIMITATION OF INCIDENTAL OR CONSEQUENTIAL DAMAGES, SO THE ABOVE LIMITATIONS OR EXCLUSIONS MAY NOT APPLY TO YOU. THIS WARRANTY GIVES YOU SPECIFIC LEGAL RIGHTS AND YOU MAY HAVE OTHER RIGHTS WHICH VARY FROM STATE TO STATE OR BY JURISDICTION.

In order to obtain performance of the warranty obligations, the original purchaser must return the Product together with proof of purchase and proof of purchase date (bill of sale) either in person or addressed to Kodak's authorized repair center. Prior to shipping the camera for service, the camera owner will be required to communicate with a Kodak service representative who will troubleshoot and determine whether or not a repair is required. The service representative will provide instructions and direction upon such determination.

In returning this product for repair or replacement under this warranty, the original consumer purchaser must prepay all postage, shipping transportation, insurance and delivery costs, and the product must be delivered in packaging and shipping materials that afford an adequate degree of protection. Kodak will not be responsible for any loss or damage incurred in connection with the return of this product.

THIS WARRANTY WILL BE VALID ONLY WITH AUTHENTIC PRODUCTS SOLD BY KODAK AND SERVICED THROUGH AN AUTHORIZED REPAIR CENTER.









Eastman Kodak Company  
Rochester, NY 14650 USA

©Kodak, 2025. TM:KODAK, EKTACHROME, TRI-X, VISION and KODAK logo are trademarks of Kodak.