

REDUCE PRODUCTION COSTS

STREAMLINE PREPRESS OPERATIONS WITH A FLEXIBLE WORKFLOW SYSTEM THAT IMPROVES EFFICIENCY AND MAXIMIZES ROI.

KODAK PRINERGY Evo Workflow is a solution for printers who don't need a fully automated, data-driven workflow. Built on proven PRINERGY PDF-processing technology, it boosts production efficiency, reduces hidden costs, and offers quick installation for immediate setup.



Fast return on investment

Fast ROI with low cost of entry and three configuration options.



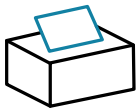
Best-in-class quality output

Maximize quality and consistency on complex jobs with state of the art color management and file normalization for print stability.



Save time

Reduce cycle times and increase productivity through job tracking and reliable high-speed processing.



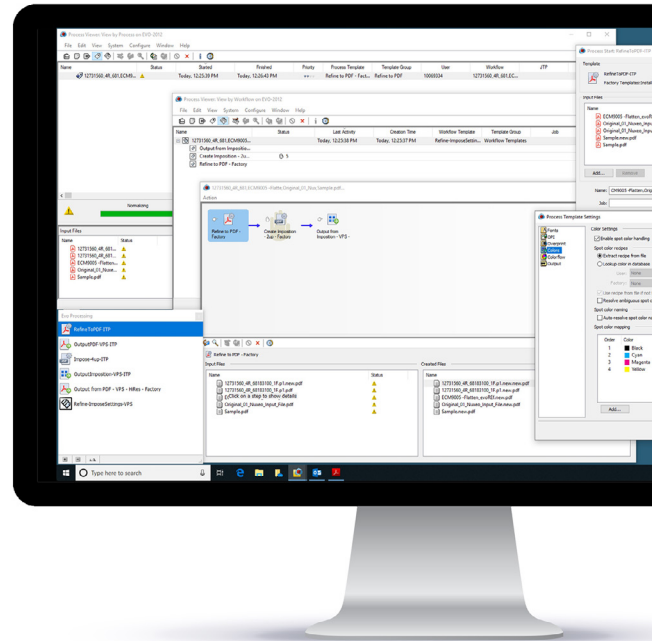
Connect to CTP or DFE output devices

Open integration expands your output choices to any 4-up and 8-up platesetter or digital device (DFE).



Scale up when you need to

PRINERGY EVO Workflow is fully upgradeable to PRINERGY Workflow, enabling you to add functionality as your business needs change.



With the Process Template Palettes and the Process Viewer, you can submit files to PRINERGY EVO Workflow as well as track progress and status for both running and completed processes.



A COMMITMENT TO INNOVATION

Kodak continues to invest in both performance and security with a steady stream of upgrades.



KODAK PRINERGY EVO WORKFLOW SOFTWARE

| FEATURE COMPARISON | 8.x | 9.x | 10.x | 11.x |
|---|-------|-------|-------|-------|
| SYSTEM | | | | |
| Dongle-less Licensing | ✓ | ✓ | ✓ | ✓ |
| APPE | V 3.x | V 5.7 | V 5.7 | V 6.2 |
| Server Side WINDOWS 10 Professional | ✓ | ✓ | ✓ | ✓ |
| Server Side WINDOWS 11 Professional | | | ✓ | ✓ |
| Server Side WINDOWS 2019 | | ✓ | ✓ | ✓ |
| Server Side WINDOWS 2022 | | | | ✓ |
| KODAK COLORFLOW Software, Workflow Edition | ✓ | ✓ | ✓ | ✓ |
| APPLICATION FEATURES | | | | |
| Language Selection | ✓ | ✓ | ✓ | ✓ |
| Selective Backup and Restore | ✓ | ✓ | ✓ | ✓ |
| Harmony to COLORFLOW Migration Tool | | | ✓ | ✓ |
| Process Template Palette | ✓ | ✓ | ✓ | ✓ |
| Process Viewer | ✓ | ✓ | ✓ | ✓ |
| Virtual Proofing System | ✓ | ✓ | ✓ | ✓ |
| Resubmit | ✓ | ✓ | ✓ | ✓ |
| Remake Icon | ✓ | ✓ | ✓ | ✓ |
| Normalizer | ✓ | ✓ | ✓ | ✓ |
| Corretto Java | | | | ✓ |
| SUPPORTING APPLICATIONS | | | | |
| KODAK PRINERGY PREPS Imposition Software | ✓ | ✓ | ✓ | ✓ |
| KODAK PRINERGY COLORFLOW Pro Software | ✓ | ✓ | ✓ | ✓ |
| KODAK PRINERGY PANDORA Packaging Step-and-Repeat Software | ✓ | ✓ | ✓ | ✓ |

TECHNICAL SPECIFICATIONS

| | |
|------------------|---|
| Operating System | Server: WINDOWS 10 and 11 Professional, WINDOWS 2019, WINDOWS 2022 |
| Client | Runs on WINDOWS 10 and 11 clients |
| Configurations | <p><i>High-end:</i> Complete end-to-end PDF Production Tools, PrintLink, Advanced Preflight and output to popular proofing, digital and CTP devices. Digital devices and any CTP device. Supports both 4-up and 8-up.</p> <p><i>Mid-range:</i> Comprehensive PDF processing including Batch Trapping, PDF Production Tools and output to popular proofing, digital and CTP devices. Supports both 4-up and 8-up.</p> <p><i>Lite:</i> Basic PDF processing and output to popular proofing, digital and CTP devices. Supports both 4-up and 8-up.</p> |
| Optional add-ons | <ul style="list-style-type: none"> • KODAK PRINERGY PREPS Imposition Software • KODAK PRINERGY COLORFLOW Pro Software • KODAK PRINERGY PANDORA Packaging Step-and-Repeat Software • KODAK PRINERGY Tools for trapping in ADOBE Illustrator • Virtualized operating environment (ESXi or Hyper-V) |

*Please consult this product's Release Notes for the most up-to-date information.



KODAK.COM/GO/PRINERGY