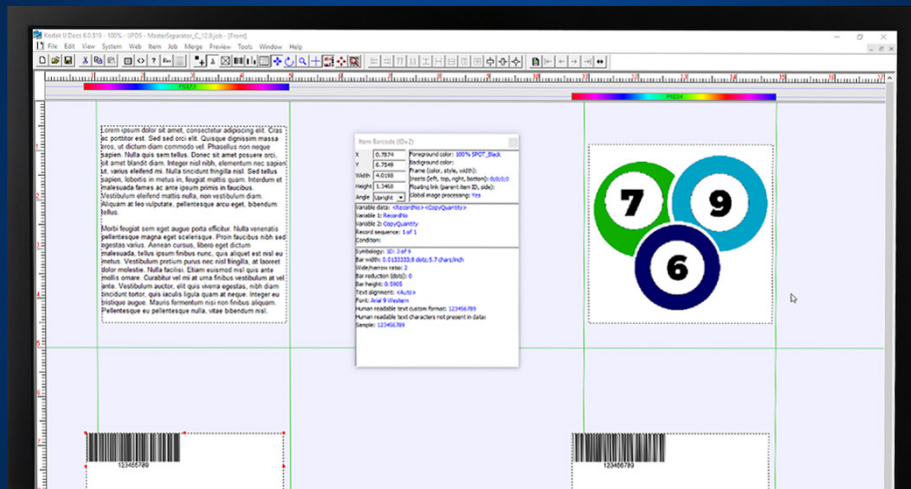


# KODAK IJ Data Prep Software



## Job authoring and document preparation software

KODAK IJ Data Prep Software is a complete document composition and job layout tool used to prepare jobs for high-speed KODAK VERSAMARK V-Series and D-Series Printing Systems, and KODAK PROSPER Imprinting Systems. This software provides layout, design, and data processing features for applications ranging from simple addressing and barcoding on mailers, to complex Transactional/TransPromo statements and personalized direct mail pieces for web systems.

Creating backgrounds is simple using IJ Data Prep Software's own layout tools, or import them from QUARKXPRESS or ADOBE INDESIGN software. On top of the background, you can create templates that define variable data positioning and characteristics, which are then applied to a database containing variable information. The software handles both fixed and variable objects, including text, graphics, barcodes, business charts, tables, and more.

### Very high speed variable-data merge engine

Designed specifically to drive Kodak's high speed inkjet printheads, IJ Data Prep Software is optimized to process the large amounts of data needed to maintain high productivity. With printing systems that run as fast as 3,000 fpm (914 mpm), the variable data merge engine will not become a bottleneck in the workflow. In fact, you'll need fewer servers to keep the merging variable data flowing at rates well over 100,000 pages per minute, depending on content.

### Powerful and easy to use

The graphical user interface (GUI) provides designers with a WYSIWYG view of job layouts for both fixed and variable data. Easily maneuver throughout the layout to view background designs, variable data templates, and the variable data itself. In addition, a built-in proofer validates the design before it prints.

### CHOOSE THE FEATURES YOU NEED

IJ Data Prep Software consists of two distinct products, both created from a similar heritage but offering two price points based on the specific features needed for different applications.

#### KODAK IJ Imprint Data Prep Software

- Best-value data preparation option for monochrome imprinting applications
- Targeted for imprinting applications such as addressing, barcoding, and versioning
- Supports both fixed and variable text, barcodes, graphics, tables, and charts

#### KODAK IJ Docs Data Prep Software

- Powerful and affordable data preparation for full color transactional printing, direct mail, and sophisticated imprinting applications
- Full feature set of IJ Imprint plus more advanced features for monochrome and process color document applications
- Includes PDF and EPS data compatibility using a Harlequin RIP (included)



# KODAK IJ Data Prep Software

## KODAK IJ Data Prep Software

### General Specifications

<b>Features</b>	<ul style="list-style-type: none"> <li>▪ IJPDS and PPML output formats</li> <li>▪ Support ODBC databases and multiple input data files for variable data</li> <li>▪ Highly optimized data merge engine and graphically rich layout tool for maximum composition performance</li> <li>▪ Mirror images for reverse printing on flexible films</li> <li>▪ Create conditional logic and data filtering through the GUI input, without programming</li> <li>▪ Generates read-and-print index file used by Kodak CS450 System Controller</li> <li>▪ Preview any document on the job</li> </ul>
<b>Text Elements</b>	<ul style="list-style-type: none"> <li>▪ Mix fixed text with variable text</li> <li>▪ International font support: single byte, double byte, and mixed byte</li> <li>▪ Arbitrary angles and word wrap</li> <li>▪ Left, center, and right justify alignment</li> <li>▪ Multiple fonts, colors, shades</li> <li>▪ RTF text format</li> </ul>
<b>Graphic Elements</b>	<ul style="list-style-type: none"> <li>▪ TIFF, JPEG, BMP, PCX, PNG</li> <li>▪ Scaling/Clipping/Inverting/Arbitrary angles</li> </ul>
<b>Color graphics and text (IJ Docs Software only)</b>	<ul style="list-style-type: none"> <li>▪ PDF/EPS input</li> <li>▪ ICC color profile</li> </ul>
<b>Bar codes</b>	<ul style="list-style-type: none"> <li>▪ 70 types of 1-D, 12 types of 2-D</li> <li>▪ Accurate ink reduction</li> <li>▪ Customizable human readable text</li> <li>▪ AutoNumber and Date and Time for Intelligent Mail Barcodes (IMB) for US Postal System</li> <li>▪ Supports shorter height IMB changes</li> </ul>
<b>Static or variable business charts</b>	<ul style="list-style-type: none"> <li>▪ 20 types of charts</li> </ul>
<b>Static or variable tables</b>	<ul style="list-style-type: none"> <li>▪ Variable row count per table</li> <li>▪ Multiple linked tables</li> <li>▪ Multiple pages per document</li> <li>▪ Double/mixed byte</li> <li>▪ Cell level word wrap</li> <li>▪ Cell level multiple fonts/colors/shades</li> <li>▪ Column level alignment</li> <li>▪ RTF text format</li> </ul>
<b>Supported Printheads</b>	<p>With IJPDS Output</p> <ul style="list-style-type: none"> <li>▪ All KODAK VERSAMARK 1", 4" and 9" printheads</li> <li>▪ All KODAK PROSPER Imprinting Systems</li> </ul> <p>With PPML Output</p> <ul style="list-style-type: none"> <li>▪ All KODAK PROSPER Presses</li> </ul>
<b>System Requirements</b>	
<b>Operating System</b>	<p>Microsoft Windows 10 Pro</p> <ul style="list-style-type: none"> <li>▪ Language: English</li> </ul>
<b>Hardware</b>	<ul style="list-style-type: none"> <li>▪ INTEL PENTIUM Processor 1Ghz or faster</li> <li>▪ 2 GB RAM</li> <li>▪ 32 GB disk storage</li> <li>▪ Graphics Card: Compatible with DirectX 9 or later with WDDM 1.0 driver</li> </ul>

Produced using KODAK technology.

Eastman Kodak Company  
343 State Street, Rochester, NY 14650 USA

©Kodak, 2020. Kodak, Prosper and Versamark are trademarks of Kodak. U.CIJ.055.1220.en.04

