
KODAK EASYSHARE W820/W1020 wireless digital frames



Extended user guide

www.kodak.com

For help with your digital frame, www.kodak.com/go/digitalframesupport

Kodak

Eastman Kodak Company

Rochester, New York 14650

© Eastman Kodak Company, 2008

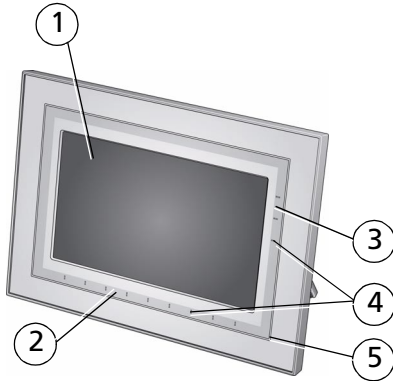
All screen images are simulated.

Kodak and EasyShare are trademarks of Eastman Kodak Company.

Eastman Kodak Company is an authorized licensee of the CompactFlash trademark.

P/N 4F8181_en

Front View

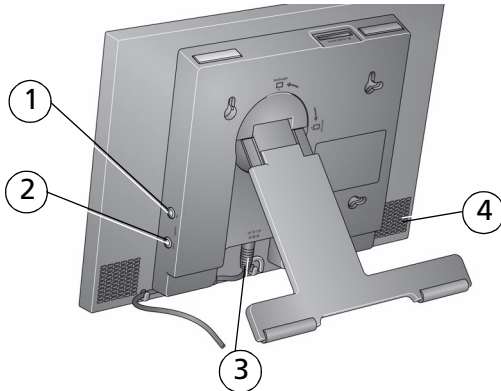



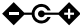
- 1 LCD screen
- 2 Touch border (tap/slide)
- 3 Touch border (tap only)
- 4 Lights
- 5 Raised guide

NOTE: When screen icons appear, Lights turn on at touch-sensitive points near the raised guide.

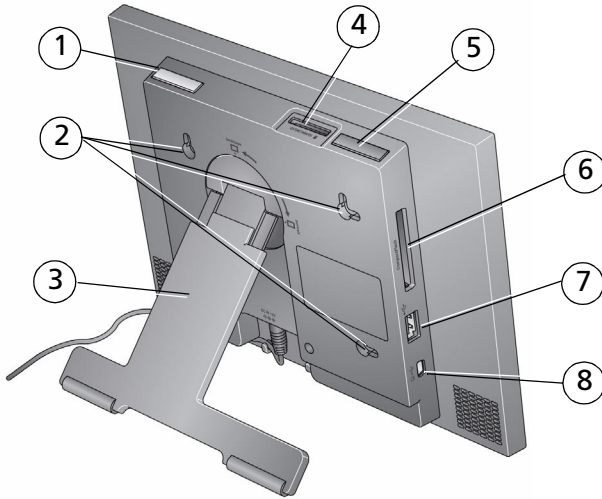
To use the touch border, see page 3.

Back/Right View



- 1 Audio In
- 2 Audio Out 
- 3 DC-In (12V) 
- 4 Speakers (2)

Back/Side View



- | | |
|--|--|
| 1 Power button | 5 Volume button |
| 2 Wall mounting holes | 6 Memory card slot - CF, MD |
| 3 Rotating/extending stand (see page 1) | 7 USB connector (to camera/USB device) |
| 4 Memory card slot - SD, MMC, MS, xD | 8 USB connector (to computer) |

Table of contents

1 Getting started	1
Setting up your frame	1
Turning on/off your frame	2
Using your frame's Quick touch borders	3
Setting your language	4
Connecting to your wireless network	4
2 Setting up for wireless operation	5
Connecting to your wireless network	5
Installing the software: PCs only	9
Verifying computer/device connections	10
Setting up access to the Gallery and Web media	11
3 Viewing on your frame	19
Enjoying your pictures immediately!	19
Inserting a memory card	19
Connecting a digital camera or other USB device	20
Viewing the Home screen	21
Accessing your pictures and videos	22
Viewing pictures and videos	23
Playing a slide show	24
Viewing thumbnails (multi-up)	25
Viewing a single picture	25
Viewing pictures by filename	26
4 Doing more with your frame	27
Playing music	27
Playing a video	28
Printing pictures	29
Copying on your frame	31
Deleting pictures	32
Selecting multiple pictures	33

5 Using wireless mode	34
What are the wireless features of my frame?	34
Setting up your frame for wireless operation	34
Wireless networking and the Internet	34
Viewing pictures/videos wirelessly	35
Viewing Gallery/Web media content	36
Automatically receiving My Friends Albums	38
Sharing pictures wirelessly	40
Copying wirelessly to/from your computer	42
6 Changing settings and more	46
Changing frame settings	46
Settings menus	46
Setting the clock and timer	49
Upgrading your firmware	50
Adding a matte and faceplate	52
Mounting your frame on the wall	52
Changing your frame orientation	53
Maintaining your frame and mattes	54
Learning more about your frame	54
7 Troubleshooting and support	55
Frequently asked questions	55
Picture frame problems	56
Picture frame/computer communications	58
Screen messages	59
8 Appendix	61
Digital frame specifications	61
Important safety instructions	63
Upgrading your software and firmware	64
Additional care and maintenance	64
Limited warranty	64
FCC compliance and advisory	66

1

Getting started

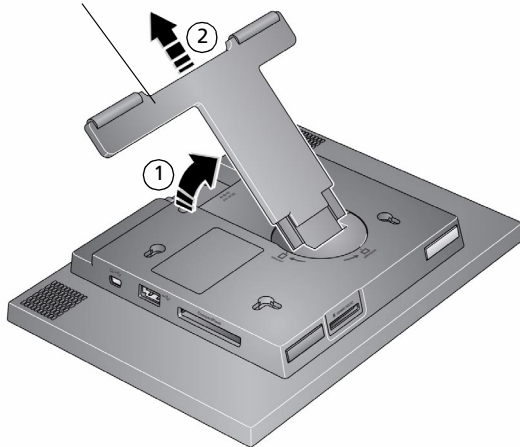
Welcome to your KODAK EASYSHARE W820/W1020 wireless digital frame. Viewing your pictures couldn't be simpler!

Setting up your frame

Setting up the stand

Your frame displays pictures in landscape  orientation. To change to portrait  orientation, see [page 53](#).

Stand (pull to adjust the frame angle for best viewing)



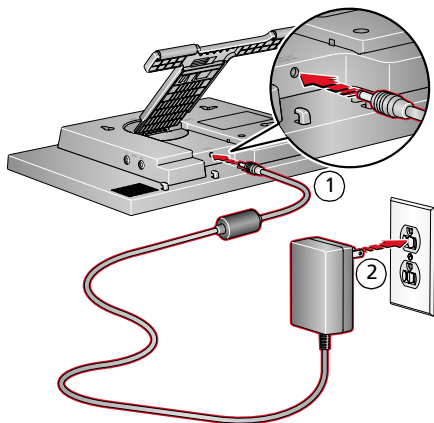
When displayed with the stand extended, the frame rests at a 68-90 ° angle.

Attaching the power cable



CAUTION:

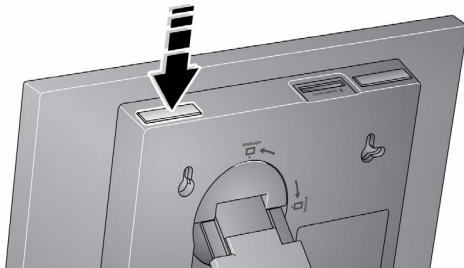
Do not use this power cable with other devices, including digital cameras.



Your power cable may look different from the one pictured. Use the plug that accommodates your type of power outlet.

Turning on/off your frame

Power button - press and hold (for about 2 seconds), then release



With the power cable still plugged in, your frame retains information (like the time) if you turn it off.

Using your frame's Quick touch borders

IMPORTANT: *The screen is not touch-sensitive. Do not touch. Lights appear on the border to show you where to touch.*



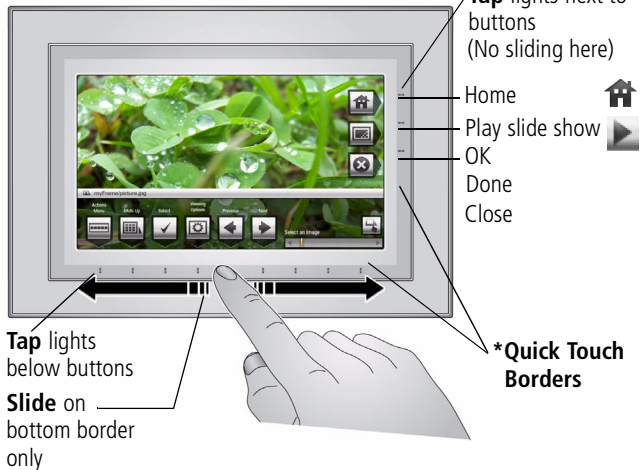
CAUTION:

Only use your finger to touch the borders. Using sharp or metal objects may damage the border or screen.

Touch tips

Tap and slide on the Quick Touch Borders* only.

- **Tap** a border to display the icons. Tap Close to dismiss them.
- **Tap** the light closest to a button to select it.
- **Slide** to highlight menus, pictures, videos, options.** Tap OK to select them.
- **Don't hover**, borders can be sensitive.



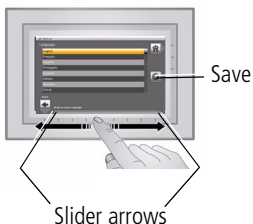
Slide to scroll:

- Scroll through images—Like turning the pages of a book, slide left ← to go forward, slide right → to go back. For faster scrolling through larger numbers of pictures, touch and hold (3 seconds), then slide to the end of the border.
- Scroll through menus—Slide right → to scroll down, slide left ← to scroll up.

** Tap below small arrows at the ends of the scroll bar to move the highlight one picture, menu, or item at a time.

Setting your language



The language screen appears the first time you turn on your frame.



- Slide (or tap below slider arrows) on the lights at the bottom border to highlight your language, then tap Save.

NOTE: Slide left/right on the lights to move up or down the list.

To change the language at a later time:

- Tap  (Home) →  (Settings) → Language.
The language screen appears.

Slide to highlight your language, then tap Save.

To use the Quick Touch Borders, see [page 3](#).

Connecting to your wireless network

After you set your language, your frame scans for available wireless networks. See [Connecting to your wireless network, page 5](#).

2

Setting up for wireless operation

If you have problems with your wireless setup or connection, see Troubleshooting starting on [page 55](#). Or open EASYSHARE Digital Display Software on your computer (see [page 9](#)) and click Tools → Wireless Troubleshooter. Follow the automated troubleshooting wizard.

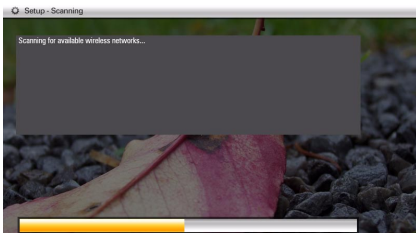
Connecting to your wireless network

To allow your frame to access the contents of your computer wirelessly, connect your frame to your wireless home network.

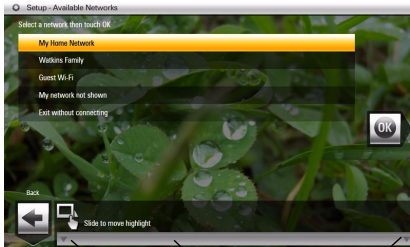
NOTE: If you are not sure you have a wireless network, ask the person who set up your computer.

1 First time—If this is the first time you turned on your frame, tap the light next to Save after you set your language, (see [page 4](#)).

The Scanning for available wireless networks screen appears.



Available wireless networks are listed.



Slider

Slider arrows



NOTE:

If the scan finds multiple networks, your home network (with the highest% signal strength) is usually listed first and highlighted.

Or, to select another network, slide to highlight a network, then tap OK.

You can slide to highlight Exit without connecting then select OK (or tap Back) to dismiss the screen and go to the Home screen, (see [page 21](#)).

If you want to connect later and start enjoying your pictures now, insert a memory card or connect a camera or other USB device with pictures (see [page 19](#)).

Later—To connect later, tap Home  → Settings . Slide to highlight Network then tap Select. Highlight Scan for wireless networks then tap OK. Then follow the screen prompts and continue with step 2 below.

If your wireless network is not found, slide to highlight My network not shown, then select OK. Check that your router is on and your frame is close to the router, then select Scan again. If your wireless network is still not found, your network does not broadcast SSIDs. You then need to enter the network SSID (sometimes called the network name) manually:

- Select Enter SSID, then select OK.


The on-screen keyboard appears.

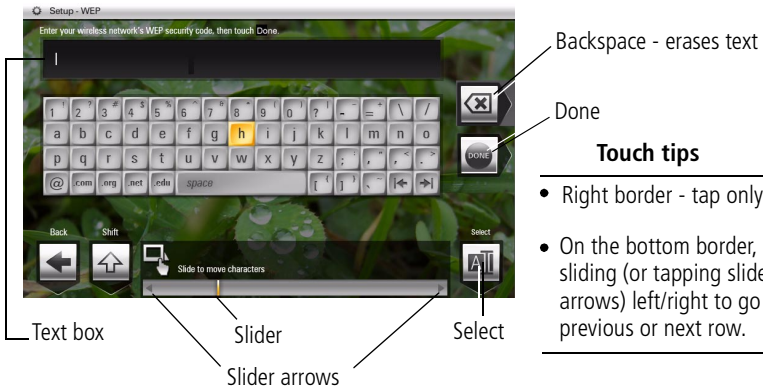
- Enter the SSID in the text box (see [page 7](#)). Tap Done when finished.

The person who set up your network can help you with this information. Or, tap Back then tap Help me connect for more information.

- 2 With your home network highlighted, tap OK to connect to your home network. *The Connecting (or the wireless network security screen, if enabled) appears.*
Or, tap Exit to go to the Home screen without connecting. (See [page 21](#).)

Enter security key (if you have wireless network security enabled)

You are prompted to enter your security key (WEP or WPA) using the on-screen keyboard. Slide along the bottom of the touch border (or tap below the slider arrows) to highlight a character then tap  (Select) to enter it in the text box. Tap Done when finished.



- Right border - tap only
- On the bottom border, keep sliding (or tapping slider arrows) left/right to go to the previous or next row.

If you do not have security enabled, go to step 3. (We recommend that you enable your network security to prevent others from accessing your wireless home network.)

NOTE: The screen identifies your security as either **WEP** or **WPA**

A **WEP** security key can be either:

5 or 13 characters (0-9, A-Z, some special characters, case sensitive)

10 or 26 characters (0-9, A-F, not case sensitive).

A **WPA** key is 8-63 characters, case sensitive.

The person who set up your network can provide you with this information.

You have successfully connected your frame to your network!

IMPORTANT: *Do not select Scan now yet. (See [page 10](#).)*

- 3** If you haven't done so already, install the KODAK EASYSHARE Digital Display Software on your PC (see [page 9](#)) so you can set up and customize your frame right from your computer wirelessly. For MAC OS users, see [page 13](#).

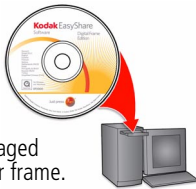
Installing the software: PCs only

IMPORTANT: For MAC OS users, do not install the software on your computer. See [page 13](#) to open your frame's Configuration Web page in your browser.

The CD that was packaged with your frame contains two applications that work well independently, but also work together for the best experience with your frame:

- KODAK EASYSHARE Digital Display Software —manage your frame right from your computer, copy between your frame and computer ([page 42](#)), and set up your frame for access to KODAK Gallery and Web content ([page 11](#)).
- KODAK EASYSHARE Software —organize, edit, and share your pictures.


IMPORTANT: We recommend that you install both. If you already have EASYSHARE Software on your computer, upgrade to this special version for additional features.



CD packaged with your frame.

- 1 Insert the CD into your computer.
- 2 Follow the on-screen instructions to install the software.
 - Click Typical to install EASYSHARE Digital Display Software and to update a previous version of EASYSHARE Software.
 - If you do not have a previous version of EASYSHARE Software on your computer, you can click Custom and choose both applications for a new installation.

The software icons appear on your desktop when the installation is complete.

- 3 Double-click  to open EASYSHARE Digital Display Software if it doesn't open automatically.

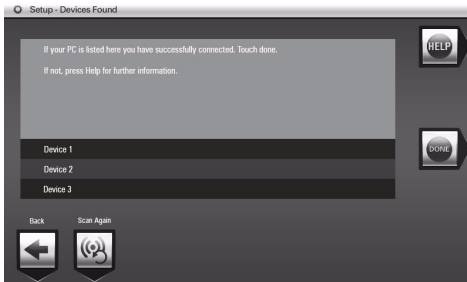
When prompted, take a few minutes to electronically register your frame and software for exclusive tips and offers. To register later, visit www.kodak.com/go/register.

Verifying computer/device connections

After installing the software (page 9) and setting up access to Web content (page 11), return to your frame (see page 7) then:

1 Tap Scan now.

The Scanning screen appears as the frame scans your network and then lists available computers and other picture sources that your frame can access wirelessly.



NOTE:

Select Scan later to connect and use your frame later to view content on your computer, wirelessly.

To verify later, tap  (Home) → Settings → Network → Verify computer connection.

If your computer is listed, your wireless setup is successful. Tap Done.

If your computer is not listed, tap Scan again or tap Help for options.

2 Tap Done to close the window and return to the Home screen.

Your frame can now access the content on your host computer, wirelessly. Your computer appears as a picture source icon  on your frame (see page 21).


NOTE: If you have more than one frame on your wireless network, give them unique names using the on-screen keyboard so you can tell them apart. Go to Home → Settings → Device configuration menu see page 48.

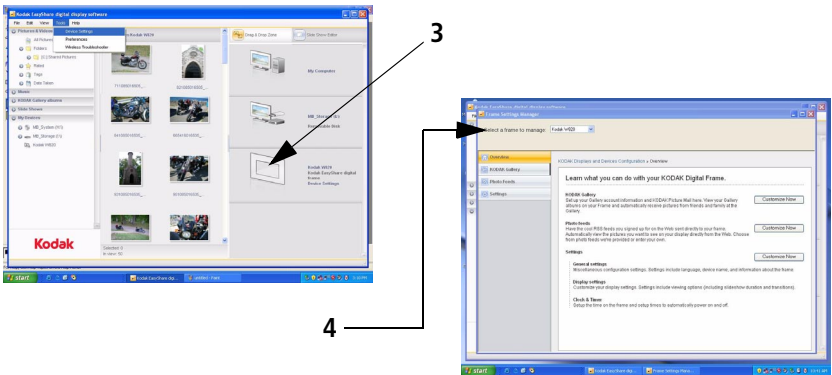
Setting up access to the Gallery and Web media

IMPORTANT: For Mac users, do not load the EASYSHARE Digital Display Software on your computer. See [page 13](#) to open your frame's Configuration Web page in your browser.

On your computer, use KODAK EASYSHARE Digital Display Software ([page 9](#)) to set up access to the KODAK Gallery and RSS (Really Simple Syndication) feeds such as publicly posted images, news, weather, sports, finance, etc. Or, use the Settings option to customize your frame right from your computer.

WINDOWS OS users

- 1 Make sure the frame and computer are connected to your wireless network ([page 5](#)) and your computer is connected to the Internet.
- 2 Click  on your desktop to open EASYSHARE Digital Display Software.
- 3 Right-click on the frame graphic in the Drag and Drop Zone then select Device Settings.

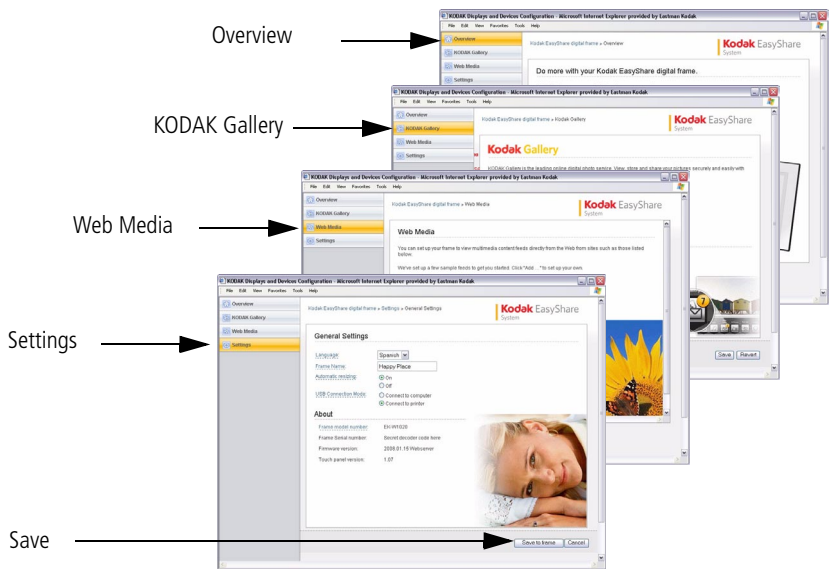


- 4 From the drop-down menu, select your frame.

Your frame's Device Settings Configuration Web page opens in your browser.

5 Click the following for on-screen setup instructions:

- KODAK Gallery—connect to your existing Gallery account or to a new one
- Web Media—add RSS (photo) feeds, Flickr, and news, weather, and sports from FrameChannel
- Settings—customize your frame with general settings right from your computer. (For more options, see [page 46](#).)





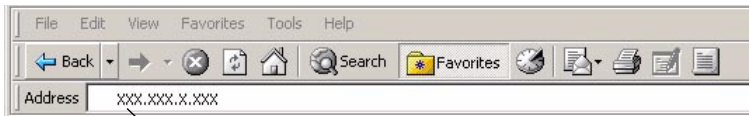
6 Click Save (at the bottom of the screen).

NOTE: The KODAK Gallery icon appears on the Homescreen when you click Save and your RSS feeds appear in alphabetical order on the Web media page in this software application and on your frame (see [page 21](#)). See [page 36](#) to view Gallery and Web media content from your frame.

MAC OS users

Instead of installing the software on your MACINTOSH computer, open the Configuration window right from your browser and start setting up access to Web content and customizing your frame from your computer (see [page 11](#)).

- 1 Make sure the frame is connected to your wireless network ([page 5](#)) and your computer is connected to the Internet.
- 2 On the frame, tap Home  → Settings  → Network, then tap Select.
- 3 Retrieve the IP address (format: XXX.XXX.X.XXX) from the frame's Network Settings screen.
- 4 Open a browser (for example, INTERNET EXPLORER, MOZILLA FIREFOX, SAFARI, etc.) on your computer.
- 5 Enter the IP address in the browser's address window, then press Enter.



Enter the IP address here

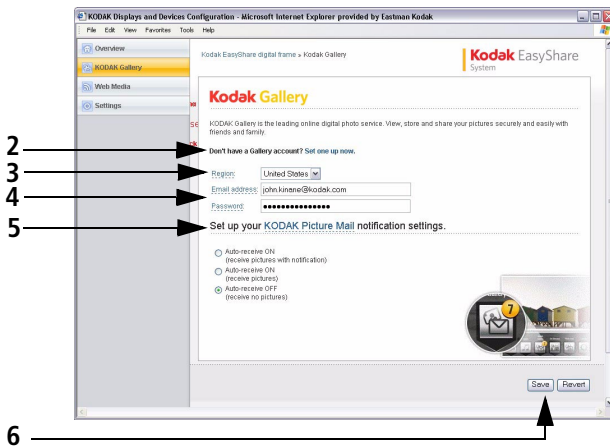
The KODAK Displays and Devices Configuration window opens in your browser.

- 6 Go to step 5 on [page 12](#) to start configuring your frame.



How to connect to your Gallery account

Perform this one-time setup on your frame to connect it to your existing Kodak Gallery account.

- 1 Follow the steps on [page 11](#) to access the Kodak Gallery configuration page.
- 2 If you don't have a Gallery account, click Set one up now. Follow the on-screen instructions, or visit www.kodakgallery.com.
- 3 Select your country/region from the drop-down menu.



- 4 Enter the email address that is associated with your Gallery account, then enter your Gallery password.
- 5 Select a Picture Mail automatic notification setting.
- 6 Click Save (at the bottom of the page).

Congratulations, you have completed your Gallery setup! KODAK Gallery appears as a choice on the Home screen or under Web media . See [page 36](#). 

How to add or edit a Web feed

Set up a sample RSS (Really Simple Syndication) feed for viewing right on your frame, or add a new feed. You can edit sample feeds which may include:

- Flickr: Interestingness - public postings of frequently changing photos from Flickr. Add tags from your computer using the digital display software. See the software Help for more information.
- FrameChannel: News
- FrameChannel: Weather
- FrameChannel: Sports
- FrameChannel: Finance
- FrameChannel: All
- Flickr: Get more

Follow the steps starting on [page 11](#) to access the Web media configuration page in the software application.

NOTE: Sample and new feeds that are on the Web media configuration page are added also on your frame's Home screen and Web media list. (See [page 36](#).)

To add a new feed:

- 1 Click Add.

The Add/Edit page appears.

- 2 Select FrameChannel or Flickr site from the drop-down menu.

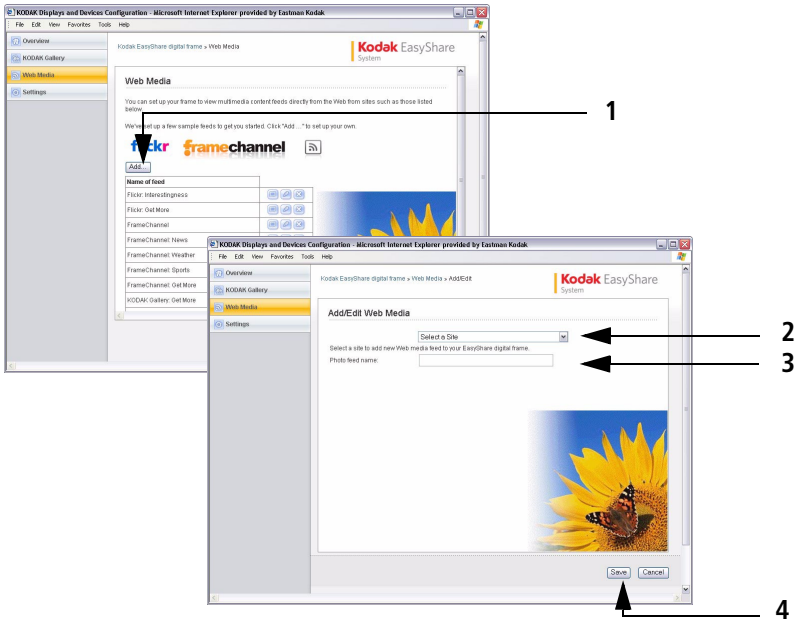
Or, to add a feed from any site:

- Select Other.
- In a new window on your computer, navigate to the RSS photo feed on the Internet.
- Copy the complete RSS photo feed URL from the site then paste it into the

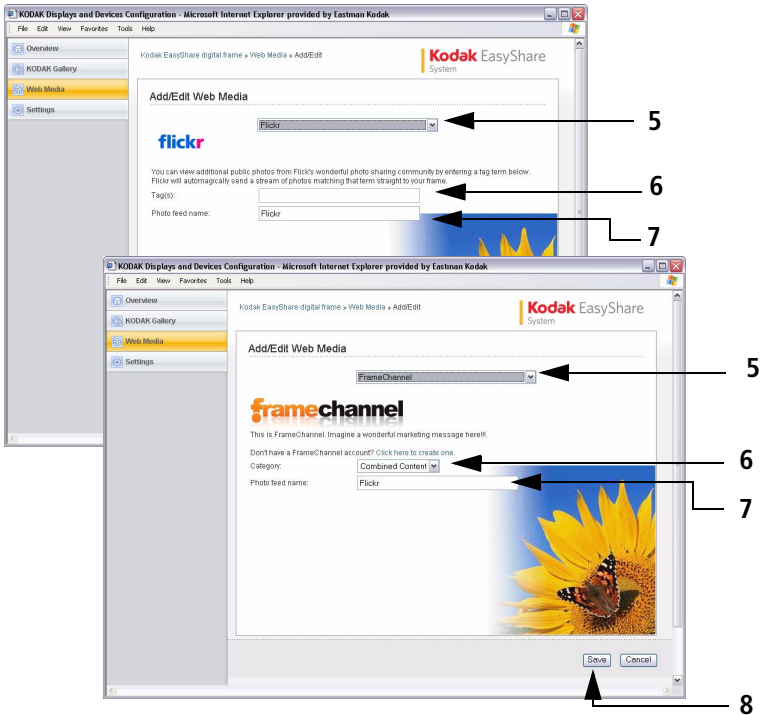
Setting up for wireless operation

URL box on the Add/Edit page.

- 3 Enter a name for photo feeds from FrameChannel and Flickr sites.
For feeds from other sites, a system-generated name you can change is assigned automatically.
- 4 Click Save at the bottom of the page.




- 5 To view additional photos by keywords (tags), select a photo-sharing site (Flickr or FrameChannel) from the drop-down menu.



- 6 Enter a tag (Flickr) or choose a category (FrameChannel) for the types of photos you want to see.


NOTE: The photo-sharing site automatically sends pictures matching the keyword directly to your frame.
 If you don't have a FrameChannel account, click the link to create one. Follow the on-screen instructions.


- 7 Assign a photo feed name.
- 8 Click Save at the bottom of the page.

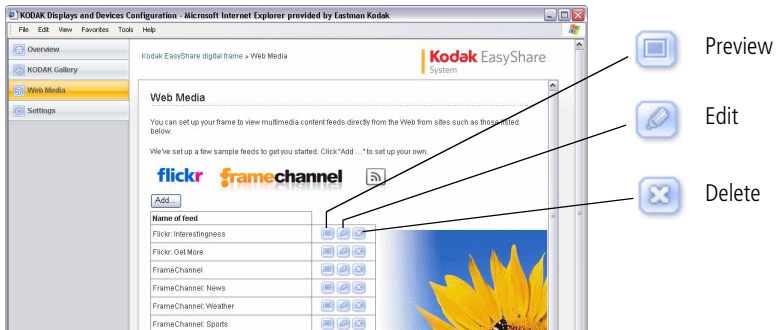
Congratulations, you have completed your photo feed setup! The newly added feed also appears on the Web media page in the software application and on your frame's Home screen and Web media  list. (See [page 36](#).)

IMPORTANT: *Feeds that don't have photos and are text only won't play on your frame. Preview, edit, or delete feeds right on the Web media configuration page in the software application.*













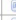










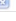
To preview a feed, click  next to the feed name.

To edit a feed, click  next to the feed name. Choose a new category (FrameChannel) or enter a new tag (Flickr), see 6. Assign a new name, if necessary.

To delete a feed, click  next to the feed name. A confirmation message appears for the deletion. Click Delete.



The screenshot shows the 'Web Media' configuration page in Internet Explorer. The page title is 'KODAK Displays and Devices Configuration - Microsoft Internet Explorer provided by Eastman Kodak'. The main content area is titled 'Web Media' and includes instructions on setting up multimedia content feeds. Below the instructions is a table of feeds with columns for 'Name of feed', 'Add', 'Preview', 'Edit', and 'Delete'. The feeds listed are: Flickr: Interestingness, Flickr: Get More, FrameChannel: News, FrameChannel: News, FrameChannel: Weather, and FrameChannel: Sports. Three callout boxes with arrows point to the 'Preview', 'Edit', and 'Delete' icons for the first feed, 'Flickr: Interestingness'.

Name of feed	Add	Preview	Edit	Delete
Flickr: Interestingness				
Flickr: Get More				
FrameChannel: News				
FrameChannel: News				
FrameChannel: Weather				
FrameChannel: Sports				

3

Viewing on your frame

Enjoying your pictures immediately!



- **To view your pictures or play a slide show,** insert a memory card, or connect a camera or other USB device (see [page 20](#)). Your pictures play automatically.

If your frame has pre-loaded sample pictures, they start playing automatically.

To maximize your frame's internal memory, delete the pre-loaded samples. Access them on My Frame ([page 21](#)), then see [page 32](#) to delete them.

If you are at the Home screen, see [page 21](#) to start your slide show. To change the order, see [page 26](#).

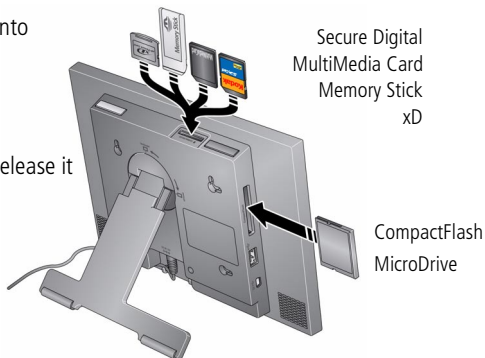
Inserting a memory card

To insert a card, push the card firmly into the slot until it stops.

To remove a card from:

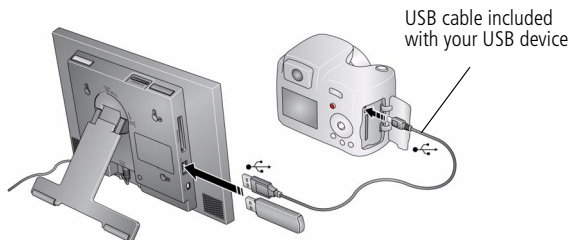
- top card slot - push in the card to release it
- side card slot - pull out the card

Important: Do not insert a micro or mini memory card without an adapter.



Connecting a digital camera or other USB device

USB devices: camera, flash drive, card reader, computer, etc. (sold separately)





Viewing the Home screen

Start at the Home screen to:

- access your pictures, videos, and music
- view Gallery and Web content on your frame
- customize your viewing through the Settings screens



- 1 Tap  (Home). If the buttons are not visible, tap the Quick Touch Borders.
- 2 Tap the border below one of the icons along the bottom of the screen.
- 3 Tap  (Close) to dismiss the icons.

Home screen icons:



Pictures and videos (see [Accessing your pictures and videos, page 22](#))



Music (see [Playing music, page 27](#))



Kodak Gallery (see [Setting up access to the Gallery and Web media, page 11](#))

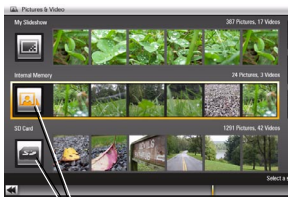


Web media (see [Setting up access to the Gallery and Web media, page 11](#))





Settings—customize frame settings such as slide show durations and transitions, viewing options, screen brightness, clock, and timer. For details, see [page 11](#) and the extended user guide at www.kodak.com/go/digitalframesupport.

Accessing your pictures and videos




Picture source icon

- 1 Tap  (Home), then  (Pictures and Videos).

All connected sources are displayed.

- 2 Slide or tap below the arrows to highlight a picture source, then:

- Tap  (Play slide show) to start a slide show of the pictures in the highlighted source.
- Or, tap OK to view thumbnails, folders, etc.

Picture sources:



My Frame—the frame's 512 MB internal memory. Copy your pictures into My Frame from a memory card or other device.



Memory card—appears when you insert a card ([page 19](#)). The label and icon indicate the type of card.



Camera—appears when you connect a digital camera via USB cable ([page 20](#)).



USB drive—appears when you insert a USB flash drive ([page 20](#)).



Home PC—appears if you are connected to a wireless network computer (see [page 5](#)). Display pictures that are stored on the computer.



My Slide show—appears when you save a favorite slide show source for quick access anytime (see [page 24](#)).

Viewing pictures and videos

View pictures and videos from any connected picture source (see [page 22](#)).




IMPORTANT: *For wireless access, make sure you set up your frame to work with your wireless home network (see [page 5](#)). See also [Viewing pictures/videos wirelessly, page 35](#).*

View a single picture and thumbnails




To view a single, full-screen picture, highlight it in thumbnails view, then tap OK. To turn off the icons and other screen text, tap Close.

NOTE: If the screen icons are unavailable, tap the touch border.

To view your pictures as thumbnails:


- Tap  (Home) →  (Pictures and Videos). Slide to highlight a picture source, then tap OK.
- Or, from a slide show or single view, tap  (Thumbnails).

Tips when viewing the thumbnail screen:

- To navigate through the thumbnails, slide your finger left/right along the slider at the bottom, or tap below the slider arrows to move one picture at a time. To move even faster through the thumbnails, touch and hold until the screen changes (about 3 seconds).
- To play a whole folder of images, highlight the folder then tap  (Play slide show).
- To play a video from thumbnails view, highlight a video thumbnail (). Tap OK or  (Play slide show).

Playing a slide show

There are two ways to start a slide show on your frame:

- Turn on the frame, then insert a card or connect a USB device—a new slide show starts automatically, replacing a currently running slide show or single view picture.
- Highlight a picture in thumbnails view (see [page 25](#)), or highlight a picture source on the Pictures and Videos screen., then tap  (Play slide show). See [page 3](#) to scroll forward/backward quickly.

NOTE: Music and videos in the same picture source play automatically during a slide show.

To add music to a slide show, see [page 27](#). Or tap Slide show options > Background music.


To prevent music from playing automatically, tap Home > Settings > Viewing Options > Music auto-play > Off.


Other slide show information

- A slide show plays continuously until you stop it or turn off the frame.
- You can change the slide duration and transition style (see [page 47](#)).
- Set your frame to play sound from a captured video, or play music (if available and selected) when videos are played. See Audio priority, [page 46](#).

Saving your favorite slide show for easy access

Save access to favorite pictures as My Slide show. While viewing a slide show:

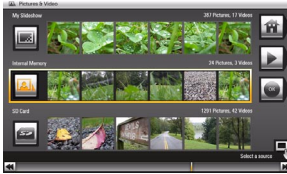
- Tap a Quick Touch Border to pause the slide show and to display the screen icons.
- Tap  (Slide show options) → Save as My Slide show. Tap Yes to confirm.




NOTE: My Slide show plays automatically when you turn on your frame. The My Slide show icon  appears on the Pictures and Videos screen as a picture source (see [page 22](#)).

This feature is especially valuable if your favorite slide show is from an external source, like Kodak Gallery, Flickr, or FrameChannel.


Viewing thumbnails (multi-up)

There are two ways to view your pictures as thumbnails:






- Tap  (Home) →  (Pictures and Videos), then select a picture source (see page 22). Tap OK.
OR,
- From a slide show (tap the touch border to display the icons) or from single view, tap  (Thumbnails).

To navigate through the thumbnails, slide your finger left/right along the slider at the bottom. To move even faster through the thumbnails, touch and hold until the screen changes (about 3 seconds).

To play a folder of thumbnail (multi-up) images, highlight the folder then tap  (Play slide show).

Viewing a single picture

- **To view a single**, full-screen picture, highlight it in thumbnails view, then tap OK. To turn off the icons and other screen text, tap Close.
- **To magnify** a picture up to 8X, tap  (Actions), tap  (Zoom), then tap the plus (+) button. To view other parts of the magnified picture, tap the arrows . To return to 1X, tap the minus (-) button.

NOTE: The zoom level depends on image size. You can zoom more with larger images.


- **To rotate** a picture, tap  (Actions), then tap  (Rotate).

Viewing pictures by filename

By default, the pictures on your frame are arranged and played by date, starting with the oldest. You can play the arrangement or order by date, newest to oldest, or alphabetically by filename.

NOTE: If a picture source with numerous images (greater than 500) takes too long to load, change the order to play by filename.

To change the sort order:

- 1 Display thumbnails (see [page 25](#)), the tap  (Slide show options).
- 2 Highlight Sort, then tap Select.
- 3 Highlight a sort order:
 - Filename, A - Z
 - Filename, Z - A
 - Date, oldest to newest (default)
 - Date, newest to oldest
- 4 Tap Save.



4


Doing more with your frame

Playing music




▶ Play/Pause button

- 1 Tap the touch border to pause your slide show and to display the screen icons.
- 2 Tap  (Home), then  (Music). Slide to highlight a music source then tap OK.
- 3 Slide to the right/left to move up/down the music source list, then tap OK.


- 4 Slide right/left to go to the previous/next song, or tap Select all, then tap the Play button on the bottom of the border to start playing music.
- 5 Tap  (Play slide show) on the right border to return to your picture, music, or slide show.



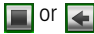

NOTE: Music plays automatically when a memory card or USB device with music on it is connected.

Notes on playing, copying, deleting music:

- A headphone jack is available on the side of the frame ([page i](#)).
- Adjust the frame volume (or car phone if it is plugged in) with the Volume button ([see page ii](#)). The on-screen volume indicator appears in the upper right.
- To copy or delete music files (MP3), highlight the songs in the music source, then tap OK. Tap  (Actions) → Copy or Delete → OK.
 - To copy, highlight the source you want to copy to, then tap OK.
 - To delete, tap Yes to confirm the deletion.
- To copy music files (MP3) to internal memory, drag and drop them from your computer. See [Copying wirelessly to/from your computer, page 42](#).

Playing a video

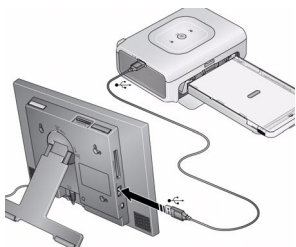
- During a slide show, videos play automatically. When the video ends, the slide show advances to the next picture or video. To play a video from thumbnails view, highlight a video thumbnail, then tap OK.
- Videos in thumbnail view:
 - MOV videos are indicated with .
 - AVI, MPEG, and MPG videos display the first frame.
- Video control buttons:

	play, pause, and resume the video.
	rewind / fast forward.
 or 	stop the video and return to thumbnails.

NOTE: To play the audio portion of a video while you are playing music, change the Audio priority in Slide show options ([see page 47](#)).

Printing pictures



Your frame is compatible with PictBridge technology, so you can print directly to PictBridge enabled printers.



- 1 Turn off the frame and printer.
- 2 Make sure your frame is disconnected from the printer.
- 3 Turn on the frame, then change your connection mode on your frame from Computer to Printer. See [page 30](#).
- 4 Reconnect your frame to the printer, using the USB cable.


Printing to a PictBridge enabled printer

- 1 Turn on the printer. Turn on the frame.
- 2 From a slide show (tap the touch-sensitive border to pause the slide show and display the icons) or from single view:


- Tap  (Actions), then  (Print).

Printing begins.

If you are in thumbnails (multi-up) view:

- Slide to select a picture, or see [page 33](#) to select multiple pictures.
- Tap  (Actions).



If you selected multiple pictures to print, the pictures and number of selected pictures appear on the screen.

- Tap  (Print), then Yes to start printing.

NOTE: Remember to change your connection mode back to Computer when you are done (see [page 30](#)).

Manually changing USB connection mode

The connection mode must match the device you connect the frame to: Computer or Printer. The default is Connect to computer. You can change the connection mode manually.

- 1** Disconnect the printer or computer from the frame.
- 2** On the frame, tap  (Home).
- 3** Tap  (Settings).
- 4** Slide to highlight Device configuration, then tap OK.
- 5** Highlight USB connection mode, then tap OK.
- 6** Slide to highlight the mode you want to connect to, printer or computer, then tap OK.
- 7** Reconnect the device (printer or computer) that matches the connection mode in step **6**.

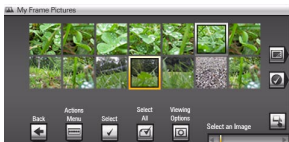
Copying on your frame

Copy pictures from your current viewing location to other connected devices (see [page 20](#)).



CAUTION:

Removing a card or disconnecting a device while copying may damage your card, pictures, or device.




- 1 Highlight a picture to copy:
In thumbnails view, slide or tap below the slider arrows to find a picture; or, display a picture in single view (see [page 25](#)).

- 2 Tap  (Actions).

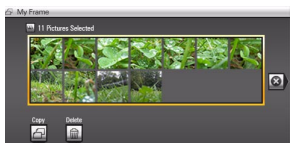
- 3 Tap  (Copy), then OK.

- 4 Tap the destination you want to copy to, then tap OK.

The picture is copied.

- 5 Tap  (Close) to close the menu.

To copy multiple pictures, see [page 33](#).



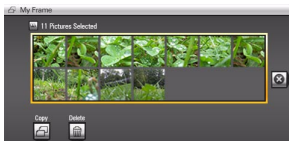
NOTE: To copy wirelessly between your frame and computer, see [page 42](#).

Deleting pictures



CAUTION:

Removing a card or disconnecting a device while deleting may damage your card, pictures, or device.




- 1 Highlight a picture to delete:
In thumbnails view, slide or tap below the slider arrows to find a picture; or, display a picture in single view.
To select multiple pictures, see [page 33](#).

- 2 Tap (Actions).
- 3 Tap (Delete), then tap Yes to confirm.
The picture is deleted.
- 4 Tap (Close) to close the menu.

To delete multiple pictures, [see page 33](#).


Selecting multiple pictures

Use the multi-select feature to copy or delete two or more pictures or to play a slide show of selected pictures.

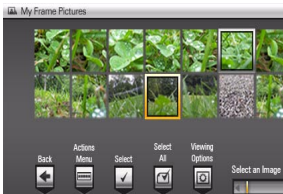
- 1 In thumbnails view (see [page 25](#)), slide or tap below the slider arrows to find a picture, then tap  (Select).

A check mark appears on the selected picture.


- 2 Continue selecting pictures.

To remove a check mark, tap  (Unselect) while the picture is highlighted.

Select/Unselect all



Select all

- In thumbnails view ([page 25](#)), tap  (Select All).

Unselect all

- To remove all check marks, tap Unselect All.

For more information on wireless setup, operation, and networks, see [Setting up for wireless operation, page 5](#) or visit www.kodak.com/go/wifisupport or www.wi-fi.org.

What are the wireless features of my frame?

Connect to your home wireless network and:

- Display pictures on your frame directly from your computer hard drive (see [page 35](#)).
- Display Web content you set up (see [page 36](#)).
- Display pictures from your *Kodak* Gallery account (see [page 37](#)).
- Automatically receive pictures from your friends and family at the Gallery (see [page 38](#)).
- Copy pictures wirelessly from your frame to your computer (see [page 42](#)).
- Automatically upgrade your firmware from the Internet (see [page 50](#)).

Setting up your frame for wireless operation

See [Installing the software: PCs only, page 9](#) and [Connecting to your wireless network, page 5](#) for detailed instructions about your software application and setting up your frame.

Do you have security enabled on your wireless network? If so, have your network name and security key (WEP or WPA) available, [see page 7](#).

Wireless networking and the Internet

Some wireless functions on your frame, including viewing pictures on *Kodak* Gallery (see [page 37](#)), require access to the Internet.

Viewing pictures/videos wirelessly



Wirelessly view pictures and videos from your computer right on your frame using the KODAK EASYSHARE Digital Display Software.

Before you proceed:

- 1 Make sure you install the software packaged with your frame ([page 9](#)). Connect to your wireless home network ([page 5](#)), then verify your computer connection ([page 10](#)).

Your frame can now access the content on your host computer, wirelessly. Your computer appears as a picture source icon  on your frame (see [page 21](#)).

NOTE: If you have more than one frame on your wireless network, give them unique names using the on-screen keyboard so you can tell them apart. Go to Home → Settings → Device configuration menu., [see page 48](#).

- 2 On your frame, tap  (Home) →  (Pictures and Videos).



- 3 Highlight Home PC , then tap OK.

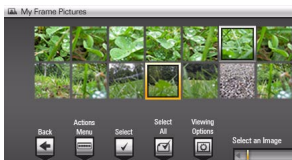
It may take up to 10 seconds for your Network Computer to appear on the Home screen.

If your network computer is not listed on the Home screen, go to troubleshooting help on [page 55](#).

NOTE: The first time you connect, a message may appear on your computer screen alerting you to a new device. Follow the prompts to "allow" the frame on your computer (see [page xxx](#)).

- 4 Highlight the category of pictures you want to view, then tap OK.

All Pictures and Videos displays every picture and video that your computer is sharing, without showing folders. The categories are established by the EASYSHARE Digital Display Software (see [page 42](#)).




- 5 Pictures are displayed as thumbnails. See [Chapter, Viewing pictures and videos](#) for all the ways you can enjoy your pictures, videos, and music on your frame.


Viewing Gallery/Web media content

- Play slide shows of Kodak Gallery albums (see [page 37](#)).
- Play slide shows of RSS (Really Simple Syndication) feeds you set up (see [page 37](#)).
- Receive pictures from your friends and family at the Gallery (see [page 38](#)).



- 1 See [page 11](#) to set up your frame for Web access.
- 2 Tap  (Home) to display the Home screen.
- 3 Tap one of these Web sources:



KODAK Gallery—appears if you set up access to KODAK Gallery (see [page 11](#)). Display your Gallery albums and My Friends' Albums. This icon () indicates someone has shared pictures with you at the Gallery! See [page 38](#).



Web media—list of Flickr and FrameChannel RSS photo feeds you set up (see [page 11](#)).

Feeds you set up as favorites for easy access (see [page 11](#)) appear on the list and as shortcuts on the Home screen.



Preloaded feeds (such as news, weather, sports, finance, etc.) that you can edit using the EASYSHARE Digital Display Software (see [page 11](#)).




Viewing Kodak Gallery pictures

View Gallery pictures and albums wirelessly right on your frame.

IMPORTANT: First, set up access to Kodak Gallery, see [page 11](#).

NOTE: Connection to Kodak Gallery is currently limited to customers in the United States, Canada, and Europe.

To see all pictures from the Gallery:

- 1 Tap  (Home), highlight  (Kodak Gallery), then tap OK.
- 2 Highlight Play all, then tap OK to see the pictures as thumbnails. Or, tap  (Play slide show) to view them as a slide show.


See [Chapter 3, Viewing on your frame](#) for all the ways you can enjoy your Gallery pictures on your frame.

NOTE: Features not supported from the Gallery at this time: viewing videos, printing and deleting pictures.



Viewing Web feeds on your frame

Wirelessly view preloaded RSS feeds or ones you added (see [page 15](#)) of frequently changing Web content such as public photos, news, weather, sports, finance, etc.

1 From the Home screen:

- Highlight a feed (such as news, weather, sports, etc.). Tap OK, then tap  (Play slide show) to play it.

OR,

- Highlight  (Web media), then tap OK to find more feeds. To start a slide show, highlight a feed option from the list, then tap  (Play slide show).

2 To pause a slide show, tap the touch border during the slide show.

To restart it, tap  (Play slide show).

To hide the controls and view full screen, tap  (Close).


Automatically receiving My Friends Albums

Your wireless frame uses *Kodak's* Picture Mail feature to notify you automatically when a friend shares pictures with you at the *Kodak* Gallery. Play a slide show of the new pictures, right on your frame, even before you see the email on your computer!

To see the shared pictures right away:








- When the notice  appears on the frame screen, tap below View now.

A slide show of the new pictures plays on your frame. If there are multiple albums you haven't viewed yet, select a marked album  from the Gallery list and tap OK.



To see the shared pictures later:





- 1 When the notice  appears on the frame screen, slide to choose Dismiss.
- 2 To see the new pictures, tap  (Home), highlight  (Kodak Gallery), then tap OK.
- 3 With My Friends' Albums highlighted, tap OK.
- 4 To view a My Friends album as a slide show, highlight the album, then tap  (Play slide show). Or, tap OK to see the pictures as thumbnails. To view all pictures in My Friends' Albums as a slide show, highlight Play all, then tap  (Play slide show).

Turning off auto-receive and notification

You can turn off auto-receive and/or notification from your friends' albums at the Gallery from the Home screen (see below) or from the Configuration Web page (see [page 14](#)).

- 1 Tap Home , then Settings . Then tap OK.
- 2 Tap KODAK Gallery then tap Select.
- 3 Highlight KODAK Picture Mail, then tap Select.
- 4 Choose from these options:

Auto-receive with notification ON—(default) you automatically receive your friends' albums and the notice appears on the frame.

Auto-receive ON—you automatically receive your friends' albums, but the notice does not appear on the frame. You know when your friends send you pictures because the email icon still appears on the KODAK Gallery on the Home screen , and on unviewed My Friends' Albums in your Gallery account .



Auto-receive OFF—you don't automatically receive your friends' albums on your frame. To view them, see [Viewing Kodak Gallery pictures, page 37](#).

Sharing pictures wirelessly


Select pictures or an album on your frame then share them wirelessly via Email. First, add the person's email address to your share list and assign an optional nickname.

IMPORTANT: *Make sure you install the software that came with your frame (see [page 9](#)) and connect your frame to your wireless home network (see [page 5](#)).*

Adding a new email address

- 1 Choose a picture source then tap  (Actions).
- 2 Tap  (Share) → Add name.
- 3 Use the keyboard to enter the email address, then tap Save.

Enter the email address

Slide along the bottom of the touch border (or tap the slider arrows) to highlight a character then tap  (Select). The character appears in the text box. Tap Save when finished.



- 4 Assign a nickname (optional) to the new email address.


Sharing your pictures

1 Highlight a picture to share:
In thumbnails view ([page 25](#)), slide or tap below the slider arrows to find a picture; or, display a picture in single view ([page 25](#)).

2 Tap  (Actions).



3 Tap  (Share).

A share list of email addresses and nicknames you created appear. The album name and number of pictures to share are also displayed.

4 Slide to highlight an email address. Or, highlight Add name to add a new email address to your share list (see [page 40](#)). Tap  (Share).

To send the pictures to more than one address, highlight each address then tap



 (Select). Tap  (Select all) to send to everyone on your list.

A progress bar of the number of shared pictures and the upload destination appears. If the destination is your Gallery account, the entire album is uploaded.

Copying wirelessly to/from your computer

The KODAK EASYSHARE Digital Display Software (included on the CD that was packaged with your frame) lets you drag and drop (copy) pictures, videos, and music wirelessly between your frame and computer or other connected devices ([page 20](#)).

Before you proceed:

- 1 Make sure you install the software packaged with your frame ([page 9](#)). Connect to your wireless home network ([page 5](#)), then verify your computer connection ([page 10](#)).

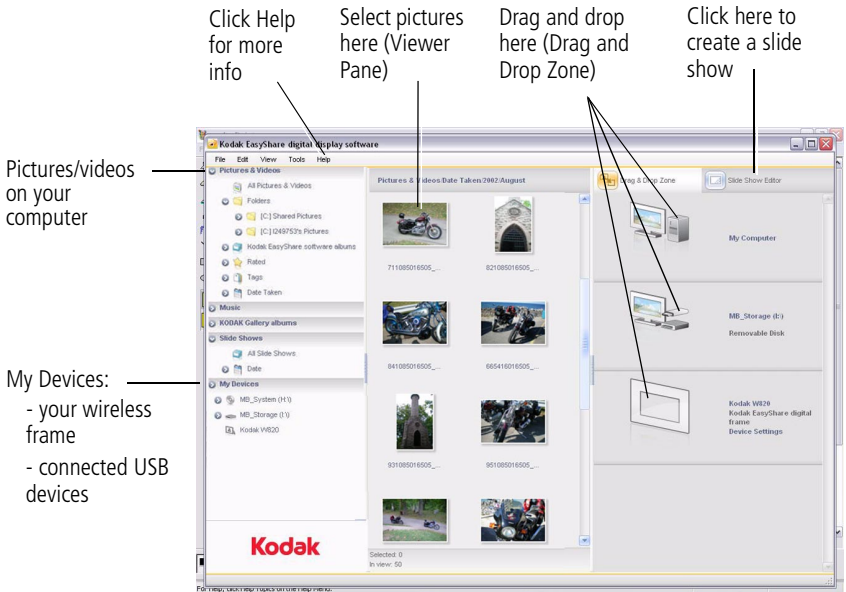
Your frame can now access the content on your host computer, wirelessly.

NOTE: If you have more than one frame on your wireless network, give them unique names so you can tell them apart. Go to Home → Settings → Device configuration menu, [see page 48](#).

- 2 Set the USB connection mode on your frame to Computer (see [page 30](#)).

- 3 Double-click  (KODAK EASYSHARE Digital Display Software icon) on your desktop to open the software.

The frame, memory card, and connected devices (see [page 20](#)) appear in the Drag and Drop Zone.



- 4 Click My Devices to see the folders on your frame and connected devices (page 20).

The frame appears as removable drives—one drive for each picture source on the frame's picture source: internal memory (My Frame), and any inserted memory cards or connected devices.

- 5 Click Pictures and Videos or My Devices to find pictures, videos, etc. you want to copy.
- 6 In the Viewer pane, select the pictures, videos, etc., then drag and drop them to the new location in the Drag and Drop Zone (for example, the frame's internal memory, a memory card, computer, or connected USB device).
- 7 Go to the copy location to view your copied pictures, videos, etc. or to play a slide


show on your frame.

NOTE: The slide show order of play for available sources is: memory card, USB device, internal memory.

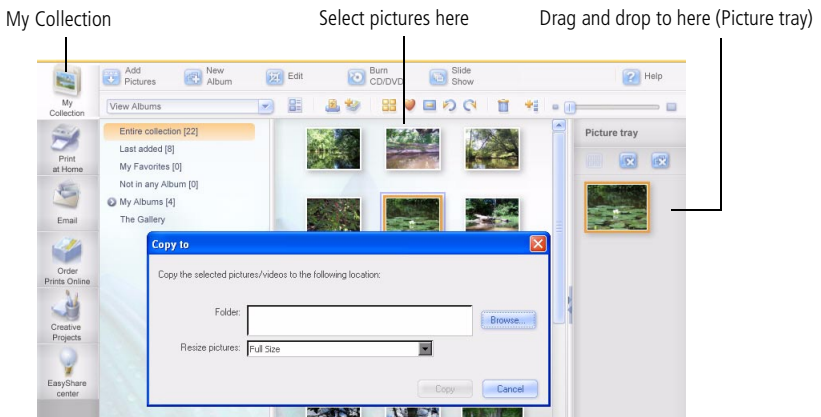
NOTE: To maintain the slide show order during playback, see [page 26](#) and select Filename, A - Z.

Copying pictures from EASYSHARE software

It's easy to copy pictures/videos from My Collection to your frame.

- 1 Install the software that came with your frame (see [page 9](#)).
- 2 Set the USB connection mode to Computer (see [page 30](#)).
- 3 Double-click  (KODAK EASYSHARE Software) on your desktop to open the software.
- 4 Click My Collection, then select the pictures in the Viewer pane. Drag and drop them into the Picture tray.
- 5 In the menu bar, select File → Copy to.

The frame appears as removable drives—one drive for each connected picture source in the frame: internal memory, memory cards, USB devices.






- 6** Browse to the frame location to which you are copying.
- 7** Select *Best For Digital Picture Frame* to resize the picture you are copying. Full resolution is unnecessary and quickly fills up the frame's memory.
- 8** Click Copy. Pictures are copied to your frame.
- 9** Go to the copy location to view your copied pictures on your frame and to play a slide show.

6

Changing settings and more

Changing frame settings

The options in the Settings menu let you customize and configure your frame.

- 1 Tap  (Home), then  (Settings).
- 2 Slide or tap below the slider arrows to highlight a setting, then tap OK.
- 3 Follow the on-screen instructions. Tap OK to accept your selections.
- 4 Tap  (Back) to exit.

Settings menus



Setting	Options
Upgrade firmware This option is only displayed if the upgrade file (.img) is available on the frame (memory card, flash drive, internal memory, etc.).	Upgrade firmware —load the latest version of firmware on your frame (page 50). Exit —return to the Home screen.

Setting	Options
<p>Slide show options</p>	<p>Slide duration—specify how long each picture is displayed in a slide show, from 3 seconds to 1 hour. (The default is 5 seconds.)</p> <p>Transitions—specify the transition style between pictures in a slide show. See screen for options. The default is Random.</p> <p>Shuffle—plays the images in random order.</p> <p>Slide show starting point—when pictures are sorted from oldest to newest (see page 26), specify where a slide show starts automatically (from picture dated 1 week back, or from oldest picture).</p> <p>Brightness—slide to adjust the screen brightness according to your lighting conditions.</p> <p>Frame orientation—display your frame in landscape (default) <input type="checkbox"/> or portrait <input type="checkbox"/> orientation.</p> <p>Screen Fit or Fill—</p> <p>Fit entire image <input checked="" type="checkbox"/> (default). Show the entire picture. Black borders may appear around the image.</p> <p>Fill the screen <input type="checkbox"/>. The picture fills the entire screen; some of the picture may be cut off (cropped).</p> <p>Music auto-play—choose to play music automatically during a slide show. (Music files must be in the same location as your pictures.)</p> <p>Audio priority—when you are playing music (page 27), choose whether or not to play the audio portion of a video.</p> <p>Play music (default). Music continues to play, video plays but its audio is muted. Play video soundtrack. Music stops playing while the video, with audio, plays.</p>
<p>Clock and timer</p>	<p>On/Off schedule—set your frame to turn on and off at a specified time every day (page 49).</p> <p>Set time—manually set the clock to the current time (page 49).</p>



Setting	Options
KODAK Gallery	Specify your country, email address, and password. First, install the software (page 9) and set up access to the Kodak Gallery (page 11).
Network	Set up your frame for wireless operation. See page 5 .
Device configuration	<p>Frame name—use the on-screen keyboard to assign a name to your frame. This name is referenced when connecting to your wireless network.. If you have more than one frame on your wireless network, give them unique names so you can tell them apart.</p> <p>RSS feeds—simple sites you set up to view on your frame using the digital display software. Edit RSS feeds from your computer using the software. See page 11.</p> <p>Frame connections—choose how your frame works with other devices. Share frame content: choose to turn off or allow devices (such as computers or other wireless frames) to access your frame contents; Remote setup: specify whether or not to allow your frame to be set up from your computer; Remote copy: turn off or allow copying to your frame from your computer; Remote copy destination: specify a default destination on your frame (internal memory, SD card, etc.) to save your copied pictures.</p> <p>USB connection mode—Before you connect a USB computer or printer, choose Connect to computer (default) or Connect to printer. See page 30.</p>
Language	Choose your language (page 4).
Automatic resizing	Choose to turn on or off automatic resizing of your pictures when copying. Full resolution is unnecessary for viewing and quickly fills up the frame's memory. Choose full resolution for printing.
About	Check your frame model, serial number, and firmware version.

Setting the clock and timer

Manually setting the clock

- 1 Tap  (Home), then  (Settings).
- 2 Highlight Clock and timer, then tap Select.
- 3 Highlight Set time, then tap Select.
- 4 Slide to set the hour. Tap the Next arrow to highlight the next setting (minutes), then slide to adjust it.
- 5 Tap Save to accept your changes.



Getting the time from the Internet

- 1 Tap  (Home), then  (Settings).
- 2 Highlight Clock and timer, then tap Select.
- 3 Highlight Get time from Internet, then tap Select.
- 4 Highlight Turn on then tap Select.
- 5 Highlight a Time Zone then tap Save to accept your changes.

Setting automatic on/off

Set your frame to turn on and off at a specified time every day.

NOTE: Set the clock before enabling auto on/off.

- 1 Tap  (Home), then  (Settings).
- 2 Highlight Clock and timer, then tap Select.
- 3 Highlight On/Off schedule, then tap Select.
The current time is displayed and the hour field is highlighted.
- 4 Set the Turn on time. Slide to adjust the hour. Tap the Next arrow to highlight the next setting (minutes), then slide to adjust it. Repeat to set Turn off time.

NOTE: Make sure the on time is earlier than the off time or the frame turns off itself.

5 Tap Enable, then Save when you're done.

Your frame will now automatically turn on and off at the times you specified.

NOTE: Make sure the power button on the frame is On. See [page 2](#).



If your frame loses power, the clock time returns to the factory setting and the automatic on/off times, if set, are disabled. To reset the clock and re-enable your on/off times, see [Resetting the clock after losing power, page 58](#).

Upgrading your firmware

Firmware is the software that runs on your frame. To check for the latest version, visit www.kodak.com/go/digitalframedownloads.

Manually upgrade firmware

Download the firmware to your computer, then upgrade your frame:

- 1 On your computer, go to www.kodak.com/go/digitalframedownloads.
- 2 Follow the screen directions to download the frame firmware to your computer.
- 3 Copy the IMG file to the root directory of a memory card or USB flash drive, then insert into the frame. See [page 31](#) for copying files.
- 4 Tap  (Home), then  (Settings).
- 5 Highlight Firmware Upgrade, then tap OK to begin the upgrade.

IMPORTANT: *Do not turn off the frame or remove the memory card or USB flash drive during the upgrade!*

When the upgrade is complete, your frame automatically restarts. If it doesn't, press the power button on the frame to Off, then back to On.

Automatically upgrade firmware from the Internet

When the frame is connected to your wireless network, you can automatically upgrade the firmware from the Internet whenever a new version is available.

A message appears on your frame when a new firmware version is detected from the Internet.

Upgrade right away

- **Install now**—Select, then press OK to start the upgrade.

When the upgrade is complete, your frame automatically restarts. If it doesn't, press the power switch on the frame to Off, then back to On.

IMPORTANT: *Do not turn off the frame during the upgrade!*

Upgrade later

- **Remind me later**—Select, then press OK.

The upgrade message disappears, then appears again the next time you turn on the frame.

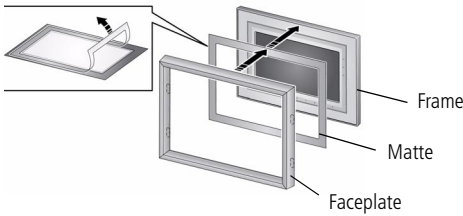
- **No thanks**—Select, then press OK.

The upgrade message disappears. To change your mind and upgrade to this version, see [Manually upgrade firmware, page 50](#).

A new message appears when the next firmware version is available.

Adding a matte and faceplate

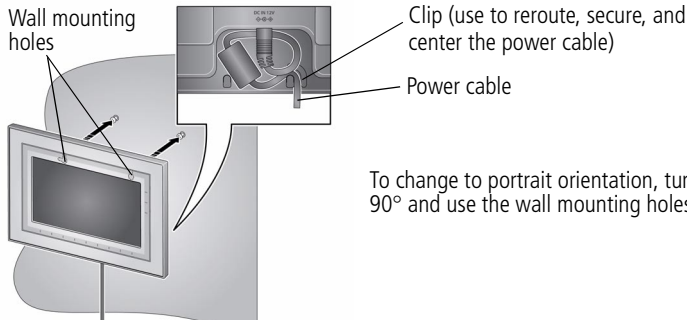
Customize your frame with a decorative matte and/or faceplate (packaged with some frames). Additional mattes and faceplates are available for purchase (see [page 54](#)).



When you are not using the matte, reapply it to the liner and store in a plastic bag to keep the adhesive backing clean.


Mounting your frame on the wall

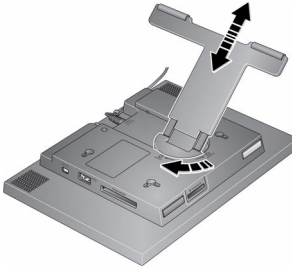
Use wall-anchoring hardware (not included) to anchor your frame securely to your wall.



To change to portrait orientation, turn your frame 90° and use the wall mounting holes at the top.

Changing your frame orientation

Change the frame orientation setting if you change to portrait  orientation.








Change the stand position and angle:

- Rotate the stand 90 °, then pull it out or push it in to adjust the frame angle.

NOTE: When displayed with the stand extended, the frame rests at a 68-90 ° angle.

Change the frame orientation setting:

- 1 Tap  (Home) →  (Settings).
- 2 Slide to highlight  (Viewing options), then tap OK.
- 3 Slide to highlight Frame orientation, then tap OK.
- 4 Slide to highlight Portrait, then tap OK
- 5 Tap  to exit.

Your frame is set up now to display pictures in portrait  orientation.

Maintaining your frame and mattes

IMPORTANT: *Always disconnect the power before cleaning. Do not use water, cleaning solutions, or other adhesives on the frame or any of its parts.*

Gently wipe the frame, LCD, or matte with a clean, dry, lint-free cloth (included). For fingerprints on the frame, apply light pressure.

Learning more about your frame

www.kodak.com/go/digitalframes

Purchase frame accessories, including decorative faceplates and custom mattes

www.kodak.com/go/digitalframesupport

Extended user guide

Interactive troubleshooting and repairs

Interactive tutorials

Frequently asked questions

Downloads

Product registration

For step-by-step product support, visit www.kodak.com/go/digitalframesupport and select Interactive Troubleshooting & Repairs.

Frequently asked questions

I already have KODAK EASYSHARE Software on my computer. Do I have to install it again?

The CD that was packaged with your frame contains a special version of EASYSHARE Software that lets your computer share pictures with your frame. Install it to upgrade to this special software version, see [page 9](#).

I lost my Internet connection in the middle of my setup. What should I do?

Reconnect to the Internet and repeat the installation and setup, starting on [page 5](#).

I can't find my network. Why?



- Is your network set up to broadcast SSID? If so, you must enter your wireless network information manually. The person who set up your network can help you with this information.
- Does your network have security enabled (WEP or WPA)? If so, [see page 7](#).

I can't find my network computer. Why?

- Make sure your router and your computer are on.
- Make sure your computer is on your wireless network. See the documentation that came with your router and your computer.
- Is your frame allowed to share content with your computer?

I didn't connect to my network the first time I turned on my frame. Can I do it now?

Yes, you can.

- 1 Tap Home  → Settings  . Slide to highlight Network then tap Select.
- 2 Highlight Scan for wireless networks then tap OK.
- 3 Continue with step 1 on [page 5](#).

Picture frame problems

If..	Try one or more of the following
Frame cannot connect to the wireless network —“Wireless network not found” appears.	<ul style="list-style-type: none">■ Make sure you have a wireless router and that it is broadcasting the SSID, or enter the SSID manually.■ Make sure you are within the operating range of the network. Move the frame into the same room with the router.■ Make sure your frame is using the latest firmware. Check www.kodak.com/go/digitalframesupport for updates.■ If your network security is enabled, see page 7 to enter your security key (WEP or WPA). The person who set up your network can help you with this information.
Frame does not turn on.	<ul style="list-style-type: none">■ Make sure the power cable that was included with your frame is connected securely (see page 2).■ Unplug the power cable for 5 seconds, then reconnect the cable. Press and hold the power button (for about 2 seconds), then release.

If...	Try one or more of the following
<p>Nothing happens when a memory card, camera, or USB device is connected.</p>	<ul style="list-style-type: none"> ■ Insert a certified SD/MMC/MS/xD/CF/MD card with images into the designated card slot, then push to seat it (see page 19). In the top card slot, make sure the card is seated flush with the top. ■ Make sure the USB cable that was included with your camera or USB device is connected securely (see page 20). ■ Make sure the file format of your pictures and videos are supported. (See page 61). <p>NOTE: Do not insert a SANDISK Memory Stick, PRO DUO Card or other micro or mini memory card without an adapter.</p> <p>NOTE: Pictures may take a longer time to display when: the picture/video files are large; when using a large capacity memory card or other connected device.</p>
<p>Touch border doesn't work.</p>	<ul style="list-style-type: none"> ■ Use your finger to make your selections on the touch-sensitive borders (see page 3). Lights on the border show you where to touch. <p>IMPORTANT: <i>Do not slide on the right border (tap only).</i></p> <ul style="list-style-type: none"> ■ Unplug the power cable for 5 seconds, then reconnect the cable. Press and hold the power button (for about 2 seconds), then release.
<p>Frame freezes up or doesn't work properly.</p>	<ul style="list-style-type: none"> ■ Unplug the power cable from the frame. Wait 5 seconds, then reconnect the cable. Press and hold the power button (for about 2 seconds), then release. ■ Press the Volume and Power buttons at the top of the frame (see page ii) at the same time, then tap Yes to reset the frame. (Resetting your frame does not erase your saved files.)
<p>Music doesn't play.</p>	<ul style="list-style-type: none"> ■ Make sure the volume is turned up (see page ii). ■ If your frame has songs you purchased, they may be protected files. Convert the files to standard (unprotected) AAC or MP3 formats.
<p>You set automatic on/off but the frame doesn't turn on and off at the specified times.</p>	<ul style="list-style-type: none"> ■ Make sure you Enabled the on/off setting after you set the times, then press OK (not Back). See page 49. ■ If your frame loses power, the clock returns to the factory setting and auto on/off times are disabled. See Resetting the clock after losing power, page 58.

Resetting the clock after losing power

If you turn off the power on the frame or otherwise lose power for half a day or more, the clock time returns to the factory setting and the automatic on/off times, if set, are disabled.

- When you turn the frame back on, the set time screen appears on the frame.
- Slide to set the hour. Tap the left/right arrows to highlight the previous or next setting (hour and minutes), then slide to adjust the setting.
- Tap OK.

The Home screen appears. The time is reset and the automatic on/off times (if set) are re-enabled. It is not necessary to reset the on/off times.

NOTE: If you exit the set time screen without setting the time, you can manually reset the clock and re-enable the automatic on/off times (see [page 49](#)). It is not necessary to reset the on/off times.

Picture frame/computer communications

If...	Try one or more of the following
Cannot copy pictures to my computer.	<ul style="list-style-type: none">■ Make sure your frame and computer are on.■ Make sure to install the software that was packaged with your frame (see page 9) and copy pictures between your frame and computer using the EASYSHARE Digital Display Software (page 42).■ Make sure the USB cable is securely connected (page 20).■ Make sure the power button on the frame is On (page ii).
Cannot see my frame as a removable drive.	
Cannot copy pictures from KODAK EASYSHARE Software.	<ul style="list-style-type: none">■ Make sure your frame and computer are on.■ Make sure the USB cable is securely connected (page 20).■ Make sure to install the software that was packaged with your frame (page 9).■ From My Collection in EASYSHARE Software, make sure the pictures are in the Picture Tray.

If...	Try one or more of the following
<p>Cannot copy pictures from one device to another even though the copy destination is not full.</p>	<p>Storage devices that have FAT (File Allocation Table)16 formatting can only store up to 512 files in its top level (root) directory. To make sure all your pictures copy properly, format the copy destination to FAT32 before copying to it:</p> <ol style="list-style-type: none"> 1 Connect the device to your computer. 2 Open My Computer and locate the device. 3 Right-click on it and choose Format. 4 From the File system drop-down menu, choose FAT32 then click Start. <p>Caution: Formatting deletes all pictures and videos, including protected files.</p>

Screen messages

Screen message	Try one or more of the following
<p>Create file failed.</p>	<p>The device (memory card, USB drive, camera, etc.) you are trying to copy to is protected.</p> <ul style="list-style-type: none"> ■ See your device documentation to remove write protection. ■ Insert or connect a different device.
<p>Printer unavailable. Unable to connect to printer.</p>	<ul style="list-style-type: none"> ■ Make sure your printer is on and the USB cable is securely connected (page 29). ■ Make sure you changed your USB connection mode from computer to printer (page 30).
<p>Printing error.</p>	<ul style="list-style-type: none"> ■ Make sure your printer is on and the USB cable is securely connected (page 29). ■ Check your printer for more info.
<p>Time out occurred while printing.</p>	<ul style="list-style-type: none"> ■ Check cables and printer supplies. Print again.

Screen message	Try one or more of the following
Write failed. Select another location.	The frame was unable to copy the picture. ■ Insert a different card or device (page 19).
Unable to create file. Device write protected or full.	The frame was unable to copy the picture. ■ Insert a different card or device (page 19).
Disk full.	■ Remove write protection, unlock card. ■ Delete pictures from card.
Error attempting to open file or directory.	■ Turn off the frame, then turn it back on. Press and hold the power button (for about 2 seconds), then release. If the problem persists, contact customer support help, at www.kodak.com/go/digitalframesupport .
Error duplicate filename.	
Error occurred while closing a file.	
Error invalid filename	
Error reading from file.	
Error writing from file.	
Error writing a file.	
Error writing to a file.	
File Copy Failed!	
Internal error.	
Parameter is invalid.	
Unknown error.	

8

Appendix

Digital frame specifications

For more specifications, visit www.kodak.com/go/digitalframesupport.

KODAK EASYSHARE W820/W1020 wireless digital frames	
Color display	
W820	20.3 cm (8 in.) diagonal digital LCD, 800 x 480 pixels, 4:3 or 16:9 aspect ratio, 17.6 x 10 cm (6.9 x 3.9 in.) viewable area
W1020	25.4 cm (10 in.) diagonal digital LCD, 800 x 480 pixels, 16:9 aspect ratio, 23.5 x 14.6 cm (9.3 x 5.8 in.) viewable area
Internal storage capacity	
W820, W1020	512 MB
Power	
Leader Electronics Inc. AC adapter, model MU18-2120150-A1, 12-volt, 1.5 amp. Europe: Phihong AC adapter, model PSA 18R-120P (See page 63 for more information.)	
Communication with computer	
USB 1.0 cable	
Wi-Fi wireless network compatibility	
W820, W1020	Yes
Other features	
PictBridge support	Yes
Picture formats	JPEG, EXIF 2.2

KODAK EASYSHARE W820/W1020 wireless digital frames	
Video formats	MOV, AVI, MPG, MPEG (Video formats created with digital cameras are certified for Kodak digital frames. Videos created with or copied from other sources may not play on the frame.)
Music format	MP3
Memory cards	MMC (MultiMedia Card); SD/SDHC (Secure Digital/Secure Digital High Capacity); Memory Stick, xD; CF; MD
Tripod mount	1/4 inch
Temperature	Operating: -4 to 140°F (-20 to 60°C) Storage: -22 to 185°F (-30 to 85°C)
Size	W820: 28.5 x 21 x 3.8 cm (11.2 x 8.3 x 1.5 in.) W1020: 33 x 24 x 3.8 cm (13 x 9.5 x 1.5 in.)

Important safety instructions



CAUTION:

Do not disassemble this product; there are no user-serviceable parts inside. Refer servicing to qualified service personnel. Do not expose this product to liquid, moisture, or extreme temperatures. The use of controls, adjustments, or procedures other than those specified herein may result in exposure to shock and/or electrical or mechanical hazards. If the LCD breaks, do not touch the glass or liquid. Contact Kodak customer support.



CAUTION:

When using this product, it should be installed and operated with a minimum distance of 7.9 in. (20 cm) for 2.4 GHz operations between the radiator and your body. This transmitter must not be collocated or operate in conjunction with any other antenna or transmitter.

- The use of an accessory that is not recommended by Kodak may cause fire, electric shock, or injury. For approved accessories, visit www.kodak/go/accessories.
- Use only a Leader Electronics Inc. AC adapter, model MU18-2120150-A1, 12-volt, 1.5 amp.
In Europe, use only a Pihong AC adapter, model PSA 18R-120P.
Use of other AC adapters may damage the frame and void your warranties.
- Use only a USB-certified computer equipped with a current-limiting motherboard. Contact your computer manufacturer if you have questions.
- When displayed with the stand extended, the frame rests at a 68 - 90 degree angle.
- Do not place frame near naked flame sources such as lighted candles or heaters.
- Excessive sound pressure from earphones and headphones may cause hearing loss.

Upgrading your software and firmware

Upgrade to the latest versions of the software included on the KODAK EASYSHARE Software CD and the frame firmware—www.kodak.com/go/digitalframedownloads. See [page 50](#) for upgrading firmware.

Additional care and maintenance

- Wipe the frame and the LCD gently with a soft, lint-free cloth (included). Do not use cleaning solutions unless designed specifically for LCD screens. Do not allow chemicals, such as suntan lotion, to contact painted surfaces.
- Service agreements are available in some countries. Contact a dealer of Kodak products for more information.
- For digital frame disposal or recycling information, contact your local authorities. In the US, visit the Electronics Industry Alliance Web site at www.eiae.org or visit www.kodak.com/go/digitalframesupport.

Limited warranty

Kodak warrants Kodak consumer electronic products and accessories (“Products”), excluding batteries, to be free from malfunctions and defects in both materials and workmanship for one year from the date of purchase. Retain the original dated sales receipt. Proof of the date of purchase will be required with any request for warranty repair.

Limited warranty coverage

Warranty service is only available from within the country where the Products were originally purchased. You may be required to ship Products, at your expense, to the authorized service facility for the country where the Products were purchased. Kodak will repair or replace Products if they fail to function properly during the warranty period, subject to any conditions and/or limitations stated herein. Warranty service will include all labor as well as any necessary adjustments and/or replacement parts. If Kodak is unable to repair or replace a Product, Kodak will, at its option, refund the

purchase price paid for the Product provided the Product has been returned to Kodak along with proof of the purchase price paid. Repair, replacement, or refund of the purchase price are the sole remedies under the warranty. If replacement parts are used in making repairs, those parts may be remanufactured, or may contain remanufactured materials. If it is necessary to replace the entire Product, it may be replaced with a remanufactured Product. Remanufactured Products, parts and materials are warranted for the remaining warranty term of the original Product, or 90 days after the date of repair or replacement, whichever is longer.

Limitations

This warranty does not cover circumstances beyond Kodak's control. This warranty does not apply when failure is due to shipping damage, accident, alteration, modification, unauthorized service, misuse, abuse, use with incompatible accessories or attachments (such as third party ink or ink tanks), failure to follow Kodak's operation, maintenance or repacking instructions, failure to use items supplied by Kodak (such as adapters and cables), or claims made after the duration of this warranty. Kodak makes no other express or implied warranty for this product, and disclaims the implied warranties of merchantability and fitness for a particular purpose. In the event that the exclusion of any implied warranty is ineffective under the law, the duration of the implied warranty will be one year from the purchase date or such longer period as required by law. The option of repair, replacement, or refund is Kodak's only obligation. Kodak will not be responsible for any special, consequential or incidental damages resulting from the sale, purchase, or use of this product regardless of the cause. Liability for any special, consequential or incidental damages (including but not limited to loss of revenue or profit, downtime costs, loss of the use of the equipment, cost of substitute equipment, facilities or services, or claims of your customers for such damages resulting from the purchase use or failure of the Product), regardless of cause or for breach of any written or implied warranty is expressly disclaimed.

Your rights

Some states or jurisdictions do not allow exclusion or limitation of incidental or consequential damages, so the above limitation or exclusion may not apply to you. Some states or jurisdictions do not allow limitations on how long an implied warranty lasts, so the above limitation may not apply to you. This warranty gives you specific rights, and you may have other rights which vary from state to state or by jurisdiction.

Outside the United States and Canada

In countries other than the United States and Canada, the terms and conditions of this warranty may be different. Unless a specific Kodak warranty is communicated to the purchaser in writing by a Kodak company, no warranty or liability exists beyond any minimum requirements imposed by law, even though defect, damage, or loss may be by negligence or other act.

FCC compliance and advisory



KODAK EASYSHARE W820/W1020 wireless digital frames

This equipment has been tested and found to comply with the limits for a Class B digital device, pursuant to Part 15 of the FCC Rules. These limits are designed to provide reasonable protection against harmful interference in a residential installation.

This equipment generates, uses, and can radiate radio frequency energy and, if not installed or used in accordance with the instructions, may cause harmful interference to radio communications. However, there is no guarantee that interference will not occur in a particular installation.

If this equipment does cause harmful interference to radio or television reception, which can be determined by turning the equipment off and on, the user is encouraged to try to correct the interference by one or more of the following measures: 1) reorient or relocate the receiving antenna; 2) increase the separation between the equipment and the receiver; 3) connect the equipment to an outlet on a circuit different from that

to which the receiver is connected; 4) consult the dealer or an experienced radio/TV technician for additional suggestions.

Any changes or modifications not expressly approved by the party responsible for compliance could void the user's authority to operate the equipment. Where shielded interface cables have been provided with the product or specified additional components or accessories elsewhere defined to be used with the installation of the product, they must be used in order to ensure compliance with FCC regulation.

FCC and Industry Canada

This device complies with Industry Canada RSS-210 and FCC Rules. Operation is subject to the following two conditions: (1) this device may not cause harmful interference, and (2) this device must accept any interference received, including interference that may cause undesired operation.

FCC et Industrie Canada

Cet appareil est conforme à la norme RSS-210 d'Industrie Canada et aux réglementations de la FCC. Son utilisation est soumise aux deux conditions suivantes : (1) cet appareil ne doit pas provoquer d'interférences nuisables, et (2) cet appareil doit supporter les interférences reçues, y compris celles susceptibles de nuire à son bon fonctionnement.



CE 1588		!		R&TTE Directive 1999/5/EC					
BE	✓	DK	✓	GR	✓	ES	✓	FR	✓
IE	✓	IT	✓	LU	✓	NL	✓	AT	✓
PT	✓	FI	✓	SE	✓	UK	✓	NO	✓
DE	✓	BG	✓	PL	✓	HU	✓	SK	✓
CZ	✓	EE	✓	RO	✓	CY	✓	LT	✓
LV	✓	MT	✓	SL	✓				

Hereby, Eastman Kodak Company declares that this Kodak product is in compliance with the essential requirements and other relevant provisions of Directive 1999/5/EC. This digital picture frame (W820 or W1020) transmits in 10 dBm. In France, the power level is limited to 10dBm in outdoor environments, per regulations. When in France, use the wireless functions of this device indoors only.

Canadian DOC statement

DOC Class B Compliance—This Class B digital apparatus complies with Canadian ICES-003.

Observation des normes-Classe B—Cet appareil numérique de la classe B est conforme à la norme NMB-003 du Canada.

Waste Electrical and Electronic Equipment labeling



EU: It is the final user's responsibility to discard this equipment into an approved, segregated collection scheme to enable its suitable treatment/disposal and to improve human/environmental protection. For more information, see your retailer, local authority, or www.kodak.com/go/recycle.

Australian C-Tick



MPEG-4

Use of this product in any manner that complies with the MPEG-4 visual standard is prohibited, except for use by a consumer engaging in personal and non-commercial activities.

Russian GOST-R



Eastman Kodak Company
Rochester, New York 14650

Цифровая фоторамка изготовлена в Китае; остальные элементы – в соответствии с маркировкой

China RoHS

环保使用期限 (EPUP)

在中国大陆，该值表示产品中存在的任何危险物质不得释放，以免危及人身健康、财产或环境的时间期限（以年计）。该值根据操作说明中所规定的产品正常使用而定。

Environmental Protection Use Period (EPUP)

In China, this number indicates the time period (in years) within which any hazardous substances present in the product are not expected to be released such that there is risk to human health, property, or the environment. This value is assigned based on normal use of the product as described in the operating instructions.

Product Disclosure Table

有毒有害物质或元素名称及含量标识表
table of hazardous substances' name and concentration

部件名称 Component name	有毒有害物质或元素 hazardous substances' name					
	铅 (Pb)	汞 (Hg)	镉 (Cd)	六价铬 (Cr6+)	多溴联苯 (PBB)	多溴二苯 醚 (PBDE)
数码相架电路板元件 (Digital Photo Frame circuit board components)	X	O	O	O	O	O
控制器 (Controller)	X	O	O	O	O	O
交流变压器电路板元件 (AC Adapter circuit board components)	X	O	O	O	O	O

○：表示该有毒有害物质在该部件所有均质材料中的含量均在SJ/T 11363-2006规定的限量要求以下。
 ×：表示该有毒有害物质至少在该部件的某一均质材料中的含量超出SJ/T 11363-2006规定的限量要求。
 ○：indicates hazardous substance concentration lower than MCV
 ×：indicates hazardous substance concentration higher than MCV



USB 数据线

Korean Class B ITE

이 기기는 가정용으로 전자파적합등록을 한 기기로서 주거지역에서는 물론 모든 지역에서 사용할 수 있습니다.

Licensing

Supply of this product does not convey a license nor imply any right to distribute content created with this product in revenue-generating broadcast systems (terrestrial, satellite, cable and/or other distribution channels), streaming applications (via Internet, intranets and/or other networks), other content distribution systems (pay-audio or audio-on-demand applications and the like) or on physical media (compact discs, digital versatile discs, semiconductor chips, hard drives, memory cards and the like). An independent license for such use is required. For details, please visit <http://mp3licensing.com>.

Index

A

- about, frame, 48
- appendix, 61
- automatic on/off, 47, 49

B

- battery
 - safety, 63
- button
 - macro/landscape, ii

C

- cables
 - USB, connecting, 20
- camera, connecting, 20
- changing picture locations, 22
- clock and timer, setting, 47, 49
- computer
 - copying to/from, 42
 - help with communicating, 58
- connection mode, 30
- copying
 - from EASYSHARE Software, 44
 - to/from computer, USB, 42

D

- deleting pictures and videos, 32
- displaying slide show, 24
- disposal, recycling, 64
- doing more with your frame, 27

E

- EASYSHARE Software
 - copying pictures from, 44
- error messages, 59

F

- fast forward video, 28
- firmware
 - checking version, 48
 - upgrading, 46, 64
- flash drive, connecting, 20
- frame, picture
 - changing orientation, 1
 - checking model, firmware, serial number, 48
 - setup, 1
 - specifications, 61
 - troubleshooting, 56

H

- help
 - communicating with computer, 58
 - frame, 56
- home
 - changing picture locations, 22
 - screen, 22

I

- internal memory
 - capacity, 61
- internet
 - requirements for wireless, 34

L

landscape, set orientation, 47
language
 setting, 48
 setting first time, 4

M

macro/landscape button, ii
multi-up view, 25

O

on/off, setting auto, 47, 49
orientation setting, 1, 47

P

PictBridge enabled printer, 29
pictures
 copying connected, 42
 copying from EASYSHARE
 Software, 44
 deleting, 32
 location, changing, 22
 selecting more than one, 33
play/pause, video, 28
portrait, set orientation, 47
power
 specifications, 61
printer connection mode, 30
printing, PictBridge printer, 29

R

recycling, disposal, 64
regulatory compliance, 66
rewind video, 28
running slide show, 24

S

safety information, 63
screen
 cleaning, 64
 error messages, 59
selecting multiple pictures, 33
serial number, checking, 48
setting
 auto on/off, 47, 49
 language, 48
 language first time, 4
 time, 47
 viewing options, 47
 wireless operation, 34
setup
 picture frame, 1
 wireless network, 34
slide duration, setting, 47
slide show
 running, 24
slide transitions, setting, 47
software
 upgrading, 64
source, picture location, 22
specifications, frame, 61
stop
 video, 28
storage capacity, internal memory, 61

T

thumb drive. See flash drive., 20
thumbnails, 25
time, setting, 47
transitions, slides, setting, 47

troubleshooting
 error messages, 59
 frame, 56

U

upgrading
 firmware, 46
 software and firmware, 64
USB connection mode, 30
USB device, connecting, 20

V

viewing
 full screen picture, 23, 25
 pictures, wireless network, 35
 thumbnails, 25

W

warranty, 64
wireless
 features on frame, overview, 34
 setup, 34
 viewing pictures, 35