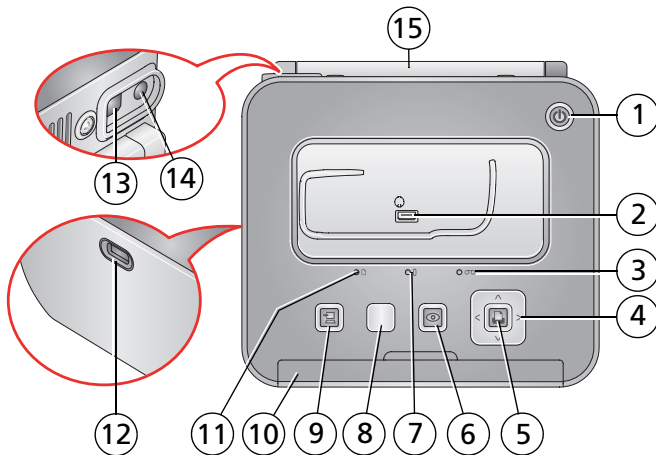








Overview



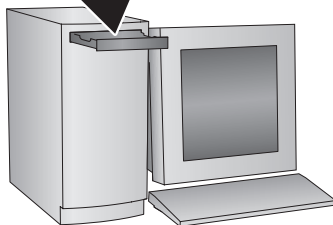
- | | |
|--|--|
| 1 Power button/light | 8 Print layout button  |
| 2 Camera connector (for Kodak EasyShare camera or ImageLink print system compatible camera) | 9 Transfer button/light  |
| 3 Cartridge status indicator light | 10 Pull-out handle |
| 4  (4-way button) | 11 Paper status indicator light |
| 5 Print button/light  | 12 USB device connector |
| 6 Red-eye reduction button/light  | 13 USB connector (to computer)  |
| 7 Camera battery status light | 14 Power connector (DC-in) |
| | 15 Connector cover for optional battery |

1 Install the software


IMPORTANT: *Before connecting any cables, install the software that was included with your printer. Follow the on-screen instructions.*

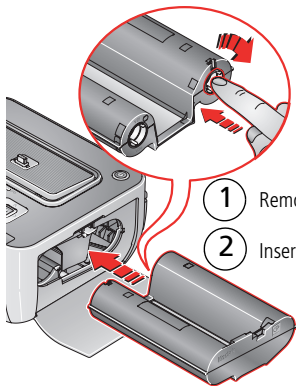


After installing the software, return to this Getting Started Guide.



2 Load cartridge and paper

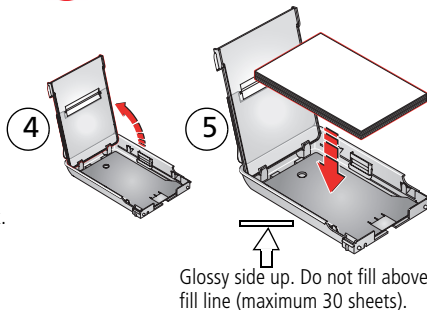
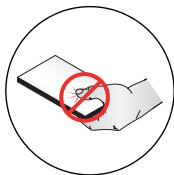
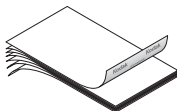
Use only Kodak color cartridge & paper kits with symbol: 



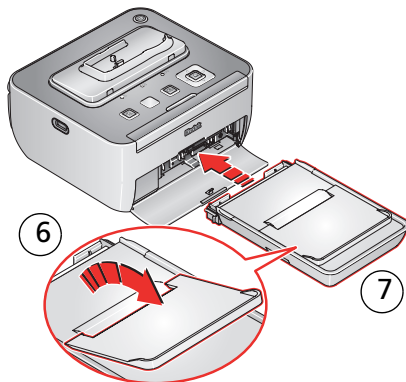
1 Remove ribbon slack.

2 Insert cartridge.

3 Fan paper

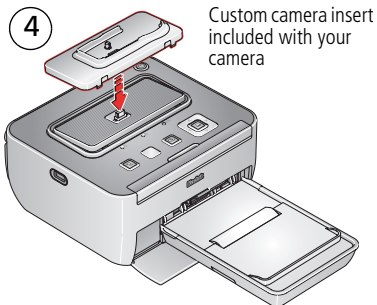
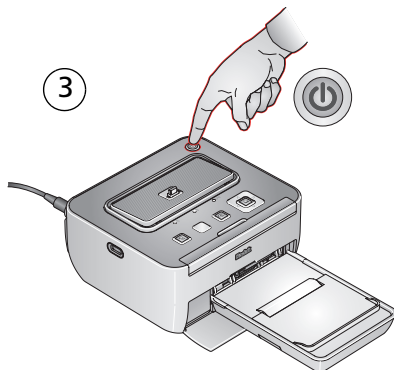
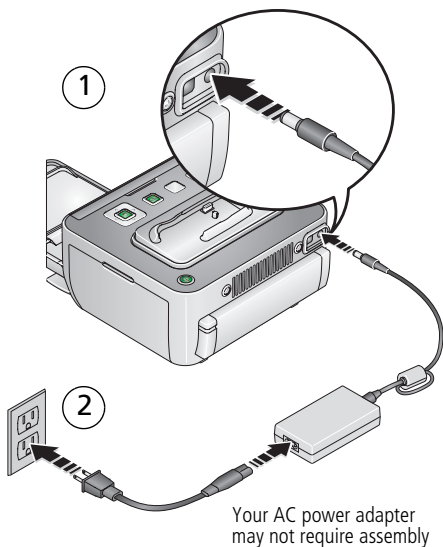


Glossy side up. Do not fill above fill line (maximum 30 sheets).



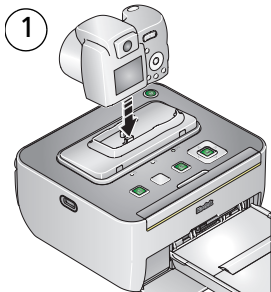
7

3 Connect power and camera insert

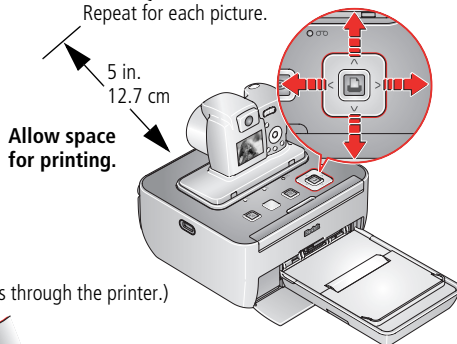


4 Dock camera and print

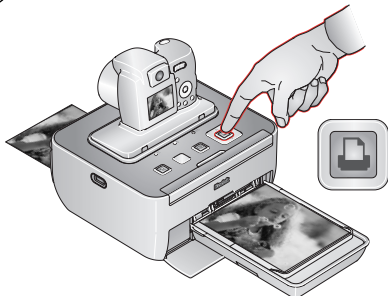
Note: To avoid cropping, use your camera's 3:2 Picture Size setting. (See your camera user's guide.)



- 2 Select pictures to print:
 Press to locate a picture.
 Press to select print quantity.
 Repeat for each picture.



- 3 Press Print. (Each picture makes 4 passes through the printer.)



Important: Do not pull out the print. The printer dock automatically ejects the finished print after the fourth pass.

5 Keep learning!

Congratulations!

You have:

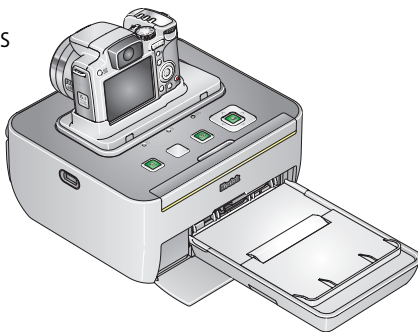
- set up your printer
- printed pictures

Keep learning!

Finish reading this book, so you can print and share your best pictures!

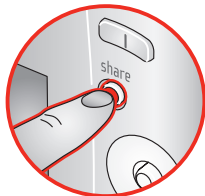
Visit www.kodak.com/go/g600support and www.kodak.com/go/easysharecenter for:

- the extended user's guide
- interactive troubleshooting and repairs
- interactive tutorials
- FAQs
- downloads
- accessories
- projects, printing tips
- product registration

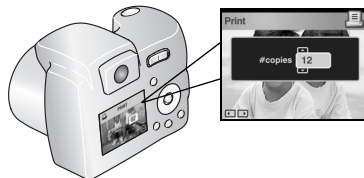


Select pictures on camera and print*

- ① Press the Share button.



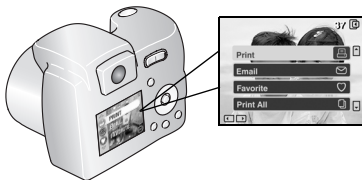
- ④ Press ▲/▼ to select copies, then press OK.



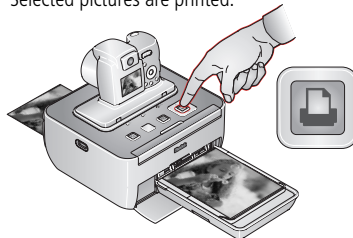
Repeat steps 2-4 to tag more pictures.

- ② Press ◀/▶ to locate a picture.

- ③ Highlight Print, then press OK.

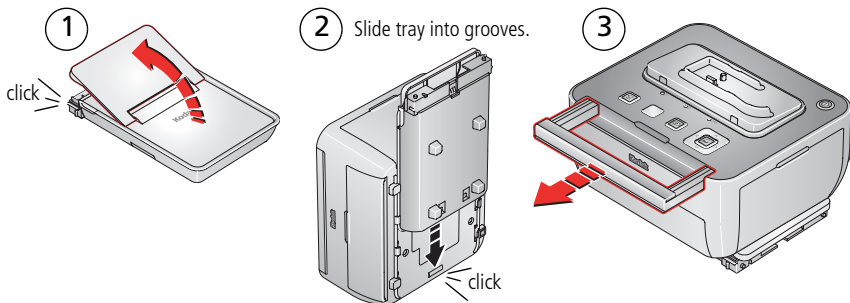


- ⑤ Dock camera, then press Print. Selected pictures are printed.



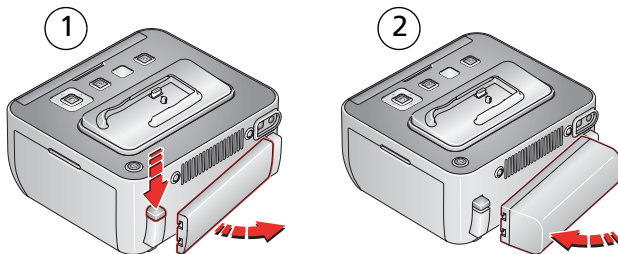
* For Kodak EasyShare cameras only. For other brands of ImageLink system compatible cameras, see your camera user's guide.

Take the printer dock with you



Optional battery installation

www.kodak.com/go/accessories



Battery charges when printer dock is plugged in.

Blinking green = Battery charging

Steady green = Charging complete

Crop pictures before printing*

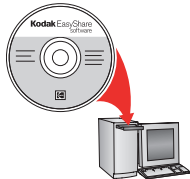
- 1 Press the Review button, then press ◀/▶ to locate a picture.
- 2 Press the Menu button, highlight Crop, then press OK.
- 3 Press the Telephoto/Wide (T/W) buttons (on the camera) to size the crop box.
Press ▲/▼ ◀/▶ to move the crop box, then press OK.
- 4 Follow the screen prompts.
Note: The original picture is saved.



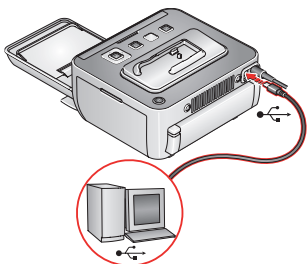
* For Kodak EasyShare cameras only. For other brands of ImageLink system compatible cameras, see your camera user's guide.

Transfer pictures, print from a computer

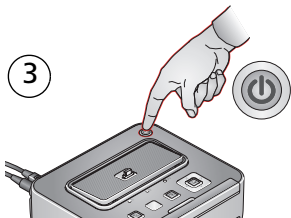
- 1 Remember to load software.



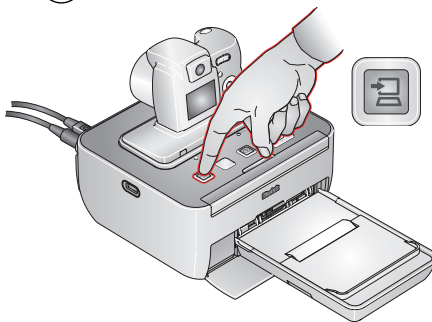
- 2



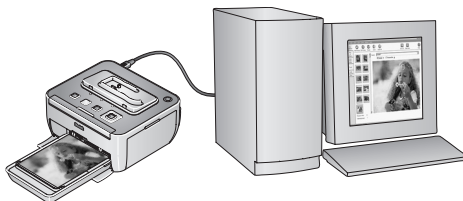
- 3



- 4 Transfer pictures to your computer.



- 5 Print using EasyShare software or other application.



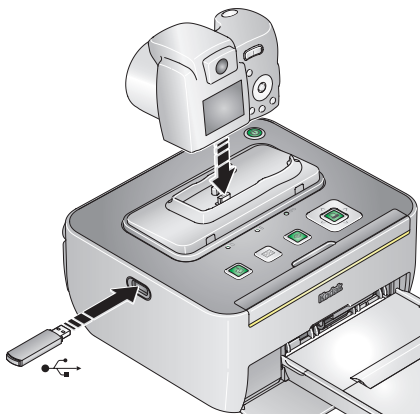
Print from a compatible USB device

USB flash drive:

- 1 You must dock your camera to review and print pictures from a USB flash drive.
- 2 To print, see page 5.

PictBridge compatible device:

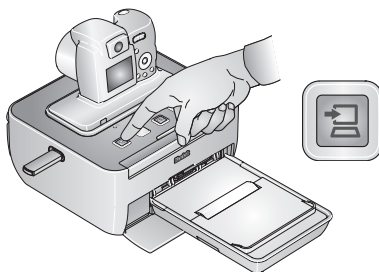
To print, see your device user's guide.



Transfer pictures to a USB flash drive

Copy one or all the pictures from your camera to a USB flash drive.

- 1 Press the Transfer button.
- 2 Follow the screen prompts.



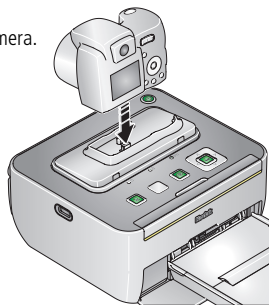
Charge a camera battery

Dock your camera to print, transfer pictures to the computer, and charge the camera battery.

This printer dock is ImageLink print system compatible. You can dock EasyShare cameras and other brands of ImageLink system compatible digital devices.

- 1 Attach a custom camera insert to the printer dock.
- 2 Load a Kodak Ni-MH rechargeable digital camera battery (KAA2HR), or a Kodak Li-Ion rechargeable battery into the camera.
- 3 Place the camera on the printer dock. Push down to seat the connector.
- 4 Keep the camera strap clear of the paper path at the front and back of the printer dock.

The camera is now powered by the printer dock instead of the camera battery. Charge for 3 hours, or until the green charging light stops blinking. Leave the camera docked to keep camera batteries charged.







Note: Not all cameras are compatible for charging on the G600 printer dock. See your camera user's guide for dock compatibility. Your printer dock charges only Kodak Ni-MH and Li-Ion rechargeable batteries, and only when powered by the AC adapter. (The printer dock will not charge camera batteries when it is powered by its optional battery.)

Change the printed picture layout

- Follow the steps (except for Press Print) to print from your digital camera or PictBridge compatible device. See page 5.

Note: You can only change the picture layout if a device with a display screen is docked to your printer.
- Press the Print-layout button repeatedly to select a picture layout:

Picture Layout setting	Number and size of prints per sheet
 1-up (full photo)	One 4 x 6 in. (102 x 152 mm) picture
 2-up	Up to two 2.1 x 3.3 in. (54 x 85 mm) pictures
 4-up (wallet size)	Up to four 2 x 3 in. (51 x 76 mm) pictures
 9-up (mini photo)	Up to nine 1.3 x 2 in. (34 x 51 mm) pictures

- Press the Print button to begin printing.


IMPORTANT: The printer dock automatically ejects the finished print after the fourth pass. Do not pull out a print.

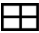
Print multiple pictures on 1 sheet



- 1 Select pictures to print on camera (see page 6) with docked camera (see page 5).

IMPORTANT: To fill up a sheet with duplicate copies, the number of copies you choose for the tagged pictures on your camera must match the number of prints in the picture layout you choose in Step 3.
- 2 Place the camera on the printer dock.

If your camera is docked, a message appears on the camera screen indicating that tagged pictures are found.
- 3 Press the Picture Layout button repeatedly to select:

2-up 

4-up 

9-up 
- 4 Press  to begin printing.

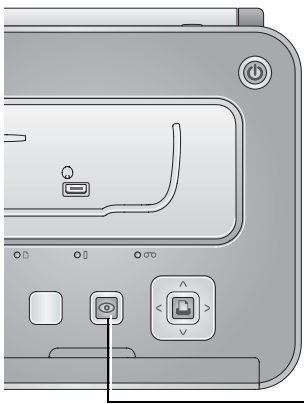


Reduce red eye in your prints

Your printer dock automatically detects and corrects red eye in your subjects before you print your pictures.

- Your printer dock defaults to red-eye reduction being always on, and the red-eye reduction button/light glows green.
- The Red-eye reduction button is disabled when printing from a computer. If printing from a computer (see page 10), make sure Kodak EasyShare software is installed on the computer.
- Your printer dock may apply red-eye reduction to an area such as a sunburn, which darkens the area in your print. Turn off red-eye reduction.
- To turn red-eye reduction off, press the Red-eye-reduction button.
- To change the red-eye reduction default to off, press and hold the Red-eye-reduction button for 5 seconds.

The Red-eye reduction light blinks, then turns off.



Red-eye reduction button/light

Appendix

Important Safety Instructions



CAUTION:

Do not disassemble this product; there are no user-serviceable parts inside. Refer servicing to qualified service personnel. Do not expose this product to liquid, moisture, or extreme temperatures. Kodak AC adapters and battery chargers are intended for indoor use only. The use of controls, adjustments, or procedures other than those specified herein may result in exposure to shock and/or electrical or mechanical hazards. If the LCD breaks, do not touch the glass or liquid. Contact Kodak customer support. When removing the battery, allow it to cool; it may be hot.

- Read and follow all warnings and instructions supplied by the battery manufacturer.
- Use only batteries approved for this product to avoid risk of explosion.
- Keep batteries out of the reach of children.
- Do not allow batteries to touch metal objects, including coins. Otherwise, a battery may short circuit, discharge energy, become hot, or leak.
- Do not disassemble, install backward, or expose batteries to liquid, moisture, fire, or extreme temperature.
- Remove the battery when the product is stored for an extended period of time. In the unlikely event that battery fluid leaks inside the product, contact Kodak customer support.
- In the unlikely event that battery fluid leaks onto your skin, wash immediately with water and contact your local health provider. For additional health-related information, contact your local Kodak customer support.
- Dispose of batteries according to local and national regulations.
- Do not charge non-rechargeable batteries. For more information on batteries, see <http://www.kodak.com/go/batterytips>
- Service agreements may be available in your country. Contact a dealer of Kodak products for more information.

Limited warranty

Kodak warrants Kodak EasyShare digital cameras and accessories (excluding batteries) to be free from malfunctions and defects in both materials and workmanship for one year from the date of purchase. Retain the original dated sales receipt. Proof of the date of purchase will be required with any request for warranty repair.

This limited warranty will be honored only within the geographical location that Kodak digital cameras and accessories were purchased.

Kodak will REPAIR or REPLACE Kodak EasyShare digital cameras and accessories if they fail to function properly during the warranty period, subject to any conditions and/or limitations stated herein. Such repair service will include all labor as well as any necessary adjustments and/or replacement parts. Such repair or replacement is the sole remedy under this warranty.

If replacement parts are used in making repairs, these parts may be remanufactured, or may contain remanufactured materials. If it is necessary to replace the entire product, it may be replaced with a remanufactured product.

Request for Warranty service will not be accepted without proof of date of purchase, such as a copy of the original dated Kodak EasyShare digital camera or accessory sales receipt. (Always keep the original for your records.)

This warranty does not apply to the battery(s) used in digital cameras or accessories. This warranty does not cover circumstances beyond Kodak's control, nor problems caused by failure to follow the operating instructions in the Kodak EasyShare digital cameras and accessories User's Guides.

This warranty does not apply when failure is due to shipping damage, accident, alteration, modification, unauthorized service, misuse, abuse, use with incompatible accessories or attachments, failure to follow Kodak's operation, maintenance or repacking instructions, failure to use items supplied by Kodak (such as adapters and cables), or claims made after the duration of this warranty.

Kodak makes no other express or implied warranty for this product. In the event that the exclusion of any implied warranty is ineffective under the law, the duration of the implied warranty will be one year from the purchase date.

The option of replacement is Kodak's only obligation. Kodak will not be responsible for any special, consequential or incidental damages resulting from the sale, purchase, or use of this product, regardless of the cause. Liability for any special, consequential or incidental damages (including but not limited to loss of revenue or profit, downtime costs, loss of the use of the equipment, cost of substitute equipment, facilities or services, or claims of your customers for such damages resulting from the purchase, use or failure of the product), regardless of cause or for breach of any written or implied warranty is expressly disclaimed and excluded herefrom.

Your rights

Some states or jurisdictions do not allow exclusion or limitation of incidental or consequential damages, so the above limitation or exclusion may not apply to you. Some states or jurisdictions do not allow limitations on how long an implied warranty lasts, so the above limitation may not apply to you.

This warranty gives you specific rights, and you may have other rights which vary from state to state or by jurisdiction.

Outside the United States and Canada

In countries other than the United States and Canada, the terms and conditions of this warranty may be different. Unless specific Kodak warranty is communicated to the purchaser in writing by a Kodak company, no warranty or liability exists beyond any minimum requirements imposed by law, even though defect, damage, or loss may be by negligence or other act.

FCC compliance and advisory



Kodak EasyShare G600 printer dock

This equipment has been tested and found to comply with the limits for a Class B digital device, pursuant to Part 15 of the FCC Rules. These limits are designed to provide reasonable protection against harmful interference in a residential installation.

This equipment generates, uses, and can radiate radio frequency energy and, if not installed or used in accordance with the instructions, may cause harmful interference to radio communications. However, there is no guarantee that interference will not occur in a particular installation.

If this equipment does cause harmful interference to radio or television reception, which can be determined by turning the equipment off and on, the user is encouraged to try to correct the interference by one or more of the following measures: 1) reorient or relocate the receiving antenna; 2) increase the separation between the equipment and the receiver; 3) connect the equipment to an outlet on a circuit different from that to which the receiver is connected; 4) consult the dealer or an experienced radio/TV technician for additional suggestions.

Any changes or modifications not expressly approved by the party responsible for compliance could void the user's authority to operate the equipment. Where shielded interface cables have been provided with the product or specified additional components or accessories elsewhere defined to be used with the installation of the product, they must be used in order to ensure compliance with FCC regulation.

Australian C-Tick



N137

Canadian DOC statement

DOC Class B Compliance—This Class B digital apparatus complies with Canadian ICES-003.

Observation des normes-Class B—Cet appareil numérique de la classe B est conforme à la norme NMB-003 du Canada.

Waste Electrical and Electronic Equipment labeling



In the European Union, do not discard this product as unsorted municipal waste. Contact your local authorities or go to www.kodak.com/go/recycle for recycling program information.

VCCI Class B ITE

この装置は、情報処理装置等電波障害自主規制協議会（VCCI）の基準に基づくクラスB情報技術装置です。この装置は、家庭環境で使用することを目的としていますが、この装置がラジオやテレビジョン受信機に近接して使用されると、受信障害を引き起こすことがあります。
取扱説明書に従って正しい取り扱いをして下さい。

English translation: This is a Class B product based on the standard of the Voluntary Control Council for Interference from Information Technology Equipment (VCCI). If this is used near a radio or television receiver in a domestic environment, it may cause radio interference. Install and use the equipment according to the instruction manual.

Korean Class B ITE

이 기기는 가정용으로 전자파적합등록을 한 기기로서 주거지역에서는 물론 모든 지역에서 사용할 수 있습니다.

English translation: As this equipment has obtained EMC registration for household use, it can be used in any area including residential areas.

Kodak

Eastman Kodak Company

Rochester, New York 14650

© Eastman Kodak Company, 2006

Kodak, EasyShare, ImageLink, and XtraLife are trademarks of Eastman Kodak Company.

4J4886_en