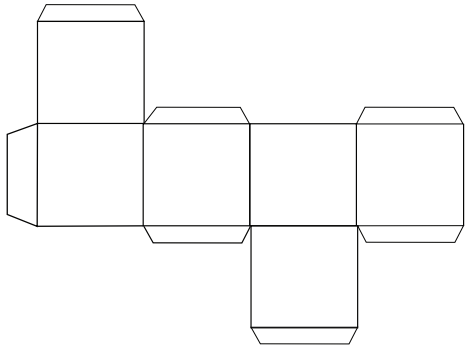
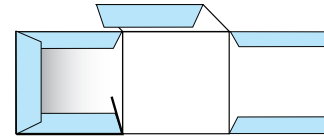


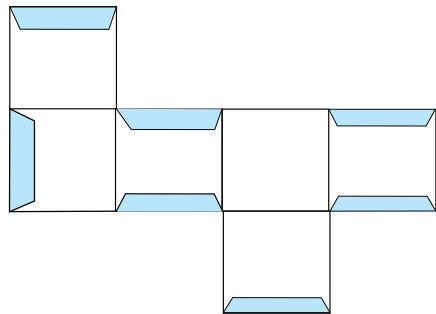
Tips & Projects Center



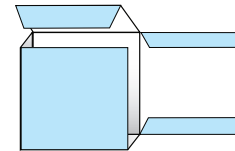
1. With your pattern face down, fold all tabs inward.



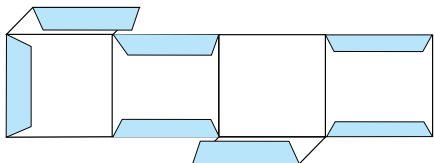
4. Start from one side folding and tucking the flaps and panels.



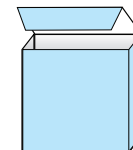
2. Next, fold the major panels so they begin to learn their shape.



5. As the sides come together you may decide a piece of tape is needed on the insides (depending on what you're putting in the box).



3. Fold the top/bottom down.



6. Tuck the top flap and spread the love.

