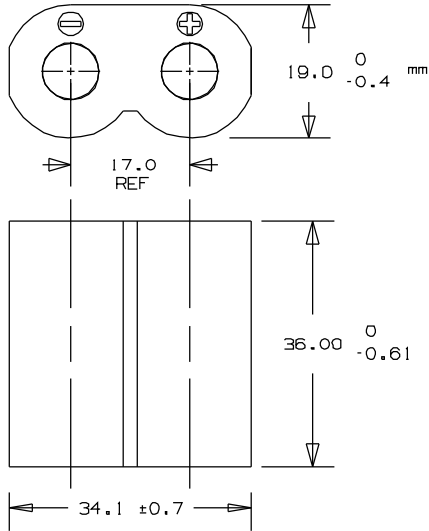


# Kodak Lithium Battery

K223LA

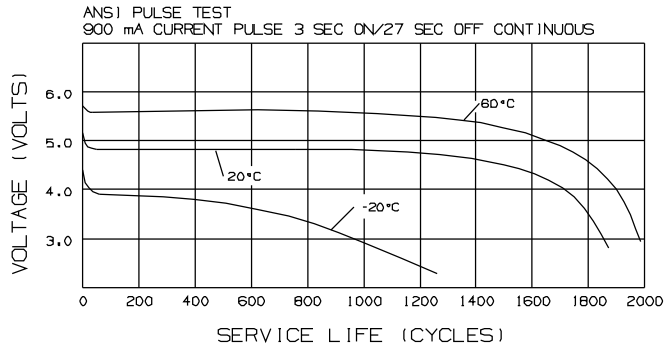
Effective : May 2005



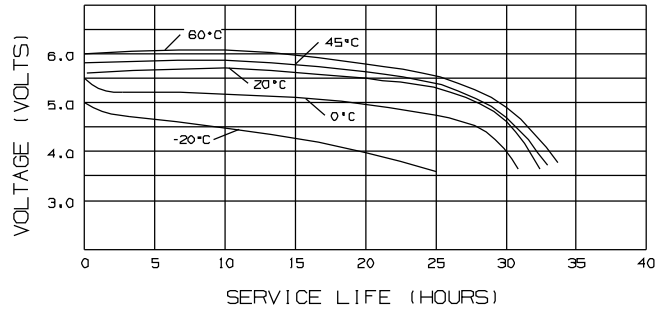
System:	Lithium/Manganese Dioxide, Li/MnO <sub>2</sub>
Designation:	ANSI 5024LC, IEC CR-P2
Nominal Voltage:	6.0 Volts (2 cells, 3 volts each)
Capacity:	1,550 mAh at 2.5 mA to 3.6 Volts
Maximum Discharge:	1,000 mA Continuous, 3,000 mA Pulse
Temperature Range:	-40°C to 65°C Operating -20°C to 45°C Storage
Average Weight:	37 grams
Volume:	23.9 cm <sup>3</sup>
Terminals:	Flat Recessed Contacts
Jacket:	Plastic Housing/Film Label
Lithium Content:	<1.0 grams/Cell, <2.0 grams/Battery
Shelf Life:	10 years to 90% of original capacity.

NOTE: 1) Recognized under the Component Program of Underwriters Laboratories Inc.  
 2) This battery complies with ANSI C18, IEC 60086, & EEC directive 91/157 standards.

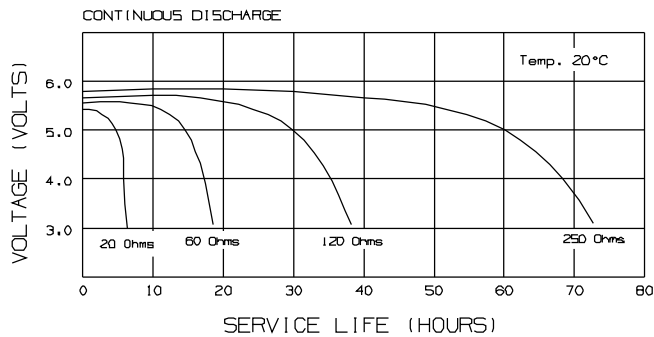
Typical Pulse (Photoflash) Characteristics K223LA



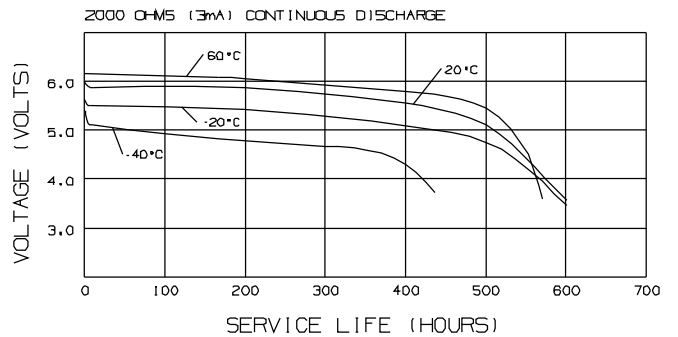
Typical Temperature Characteristics K223LA  
120 OHMS CONTINUOUS DISCHARGE



Typical Discharge Characteristics K223LA



Typical Temperature Characteristics K223LA



The curves and data in this publication represent product tested under the conditions specified. They do not represent standards or specifications which must be met by Eastman Kodak Company. The company reserves the right to change and improve product characteristics at any time.

For more information, contact  
 EASTMAN KODAK COMPANY  
 343 State Street  
 Rochester, New York 14650-0811  
 1-800-242-2424  
[www.kodak.com/go/batteries](http://www.kodak.com/go/batteries)